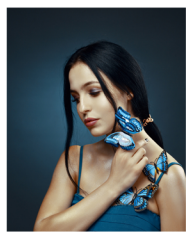
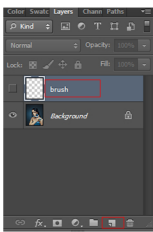


HOW TO Work Action

First Open a Photo Take new Layer and Rename it brush (brush Type lowercase) and select a brush and brush image area you want and close brush layer eye. Keep Selection brush layer and click Play battun.



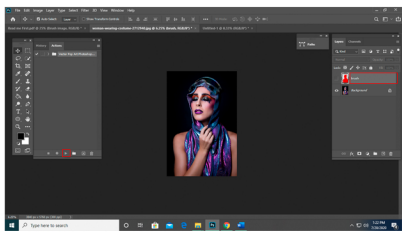
Open Photo



Take New Layer



Brush image

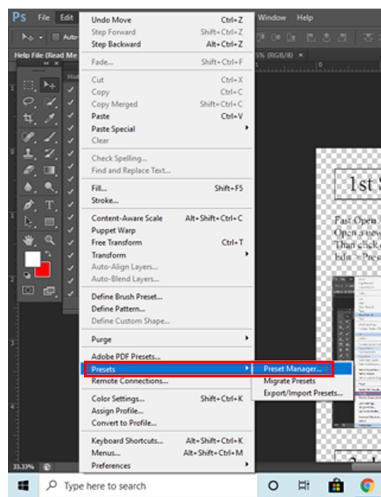


Close brush layer eye & keep Selection brush layer than click action play battun. The action is run...

HOW TO LOAD BRUSH/PATTERN?

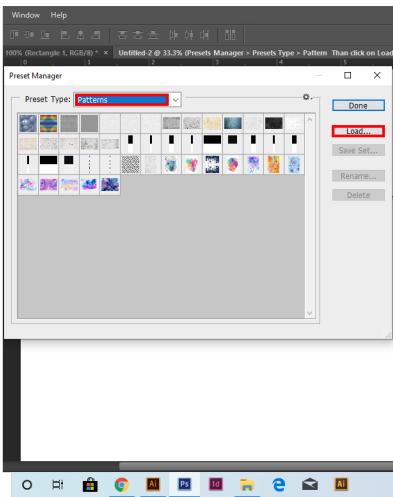
1st Step

First open Adobe Photoshop
Open a new page
Than click Edit Menu
Edit > Presets > PresetsManager



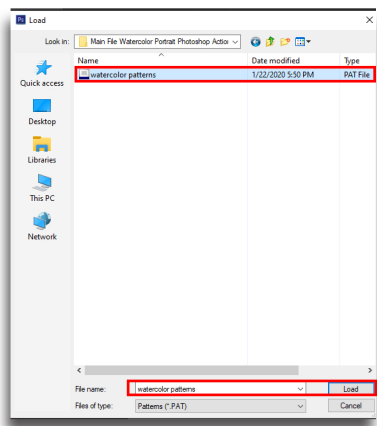
2nd Step

Presets Manager > Presets Type > Brush/Pattern
Than click on Load for load Brush/ Pattern



3rd Step

Load > open Brush /Pattern location
Than select Brush/Pattern And click on Load



4th Step

The Brush /Pattern was Load Done
Than click on Done.....

