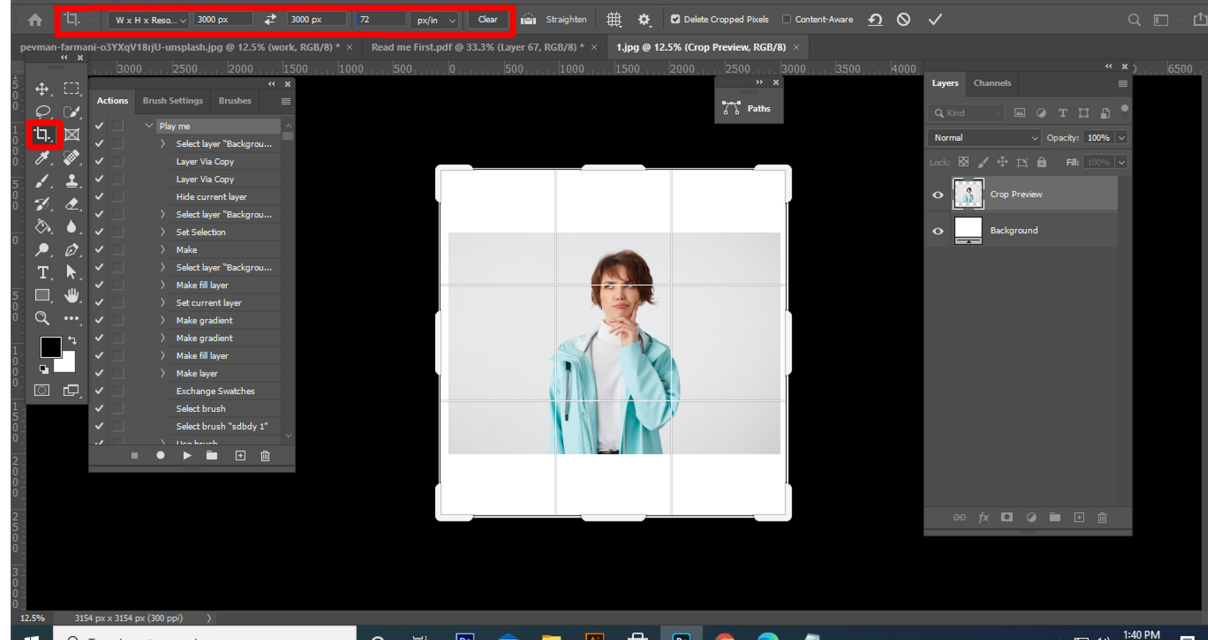


FOR GOOD RESULT :

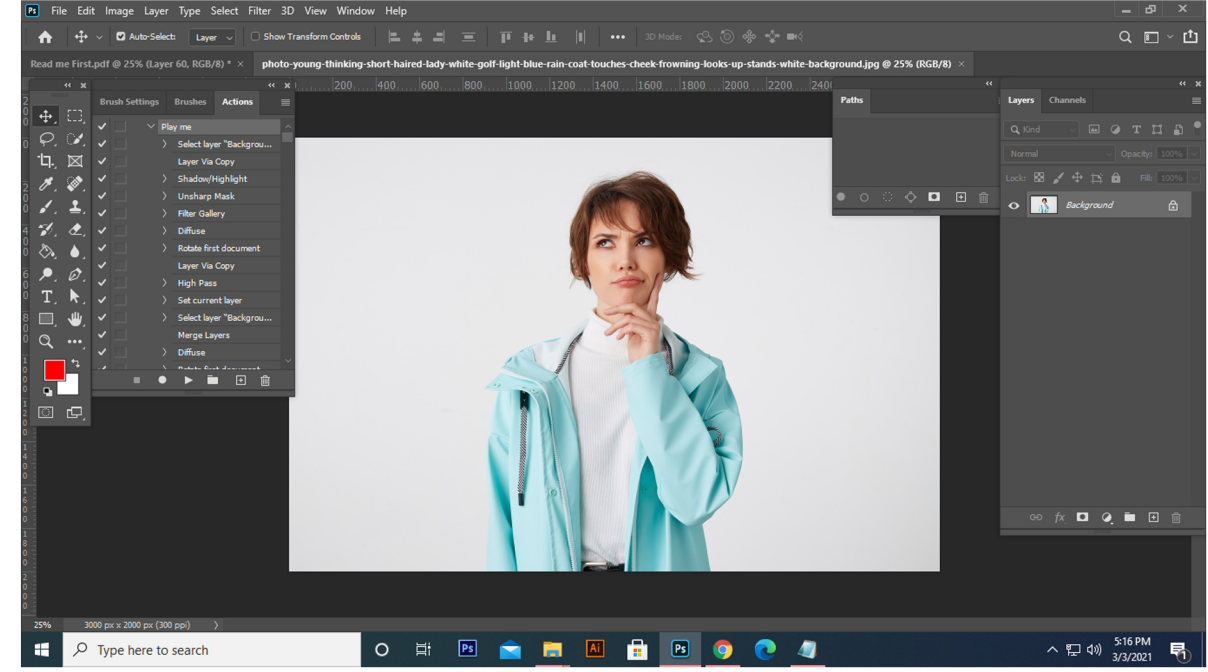
First open an image in Photoshop. Expand the space around your photo for best results. Select your Background image and take crop tool from tools bar then expand all side. Now you need resize your image. For resize image select crop tools and go top menu bar you see W x H x Reso three blank box. Write W 3000px,H 3000px,Resolution 72. Then press enter button.



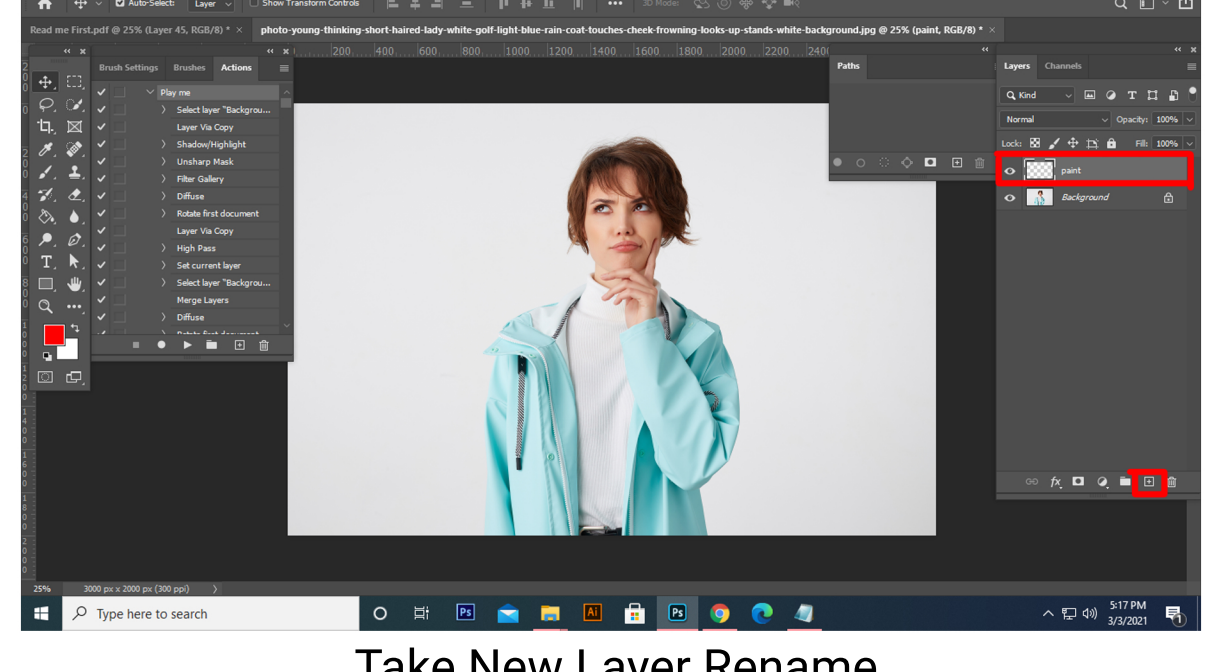
Select your background image Take crop tools then expand two side or all side.

HOW TO Work Action

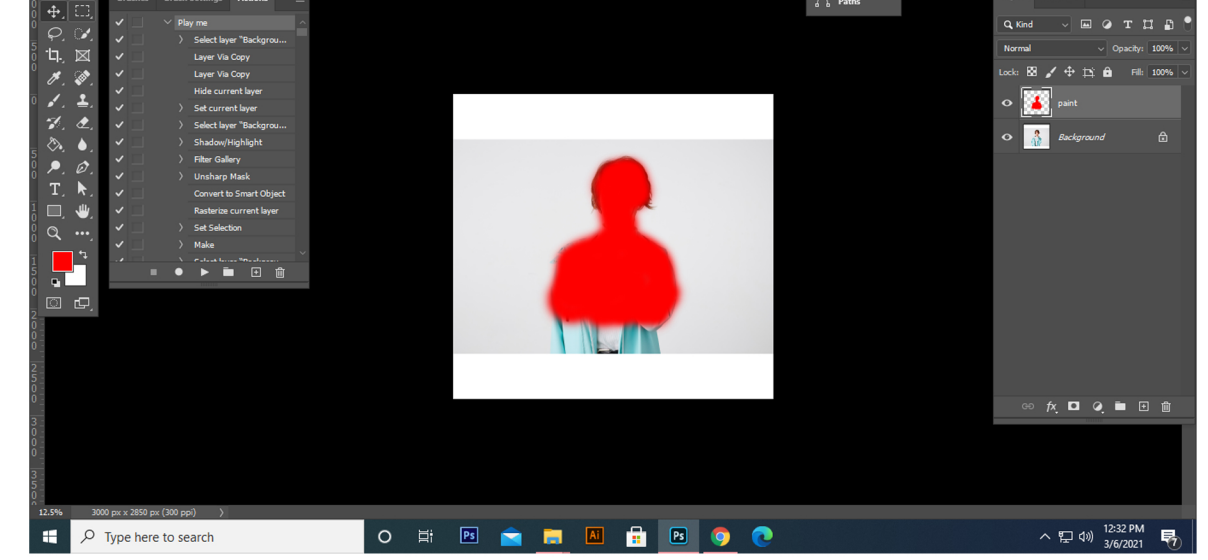
Open your photo take a new layer then rename "paint"(in lowercase).Then select a soft brush and paint your image. Close "paint" layer eye and keep selection "paint" layer Then click action play button.



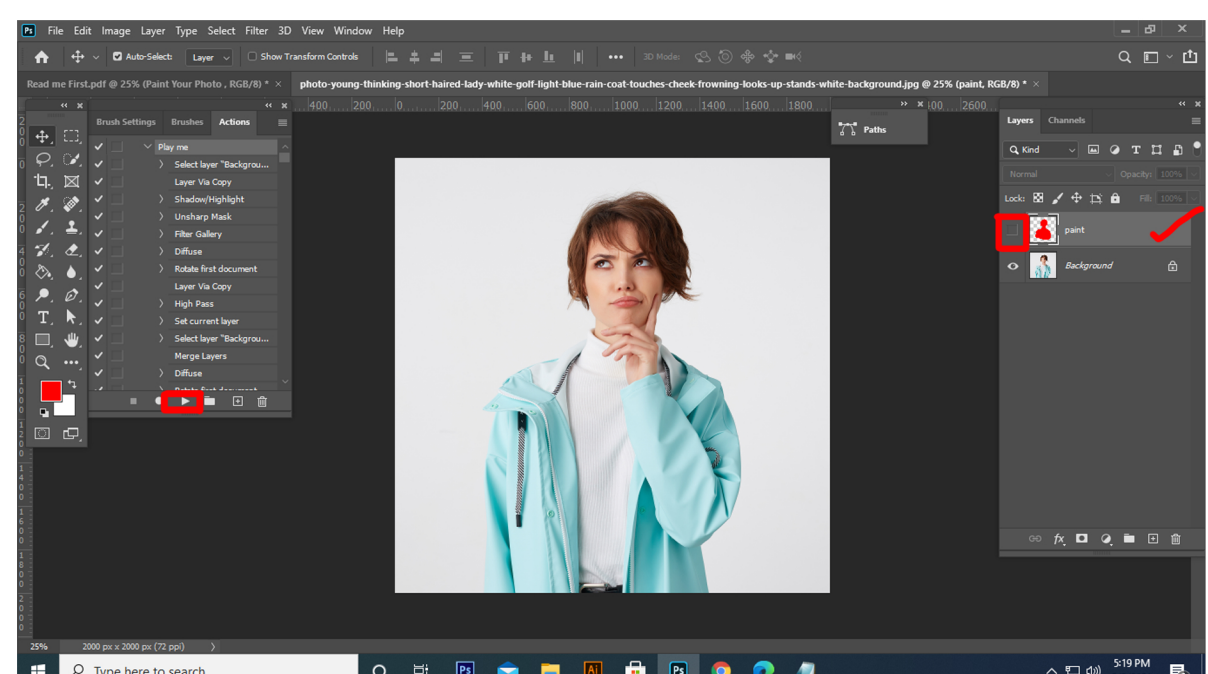
Open Your Photo



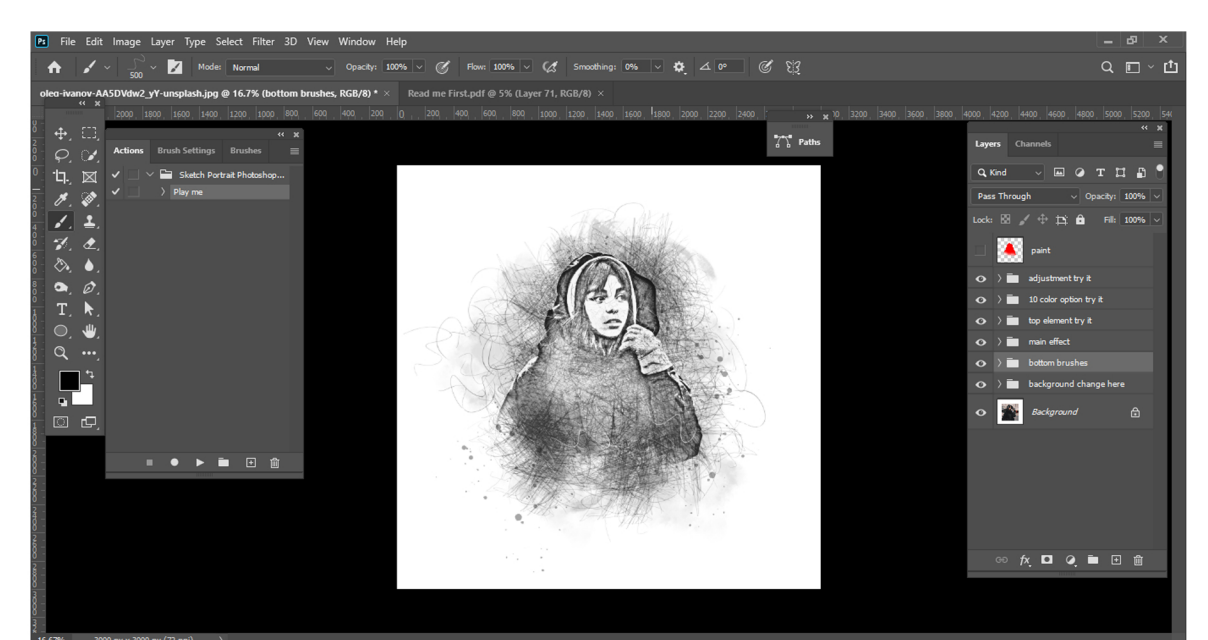
Take New Layer Rename "paint"(in lowercase).



Paint Your Photo



Close "paint" layer eye and keep selection "paint" layer Then click action play button.

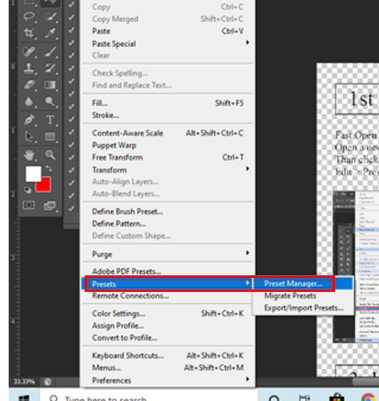


Here is the final result

HOW TO LOAD BRUSH/PATTERN?

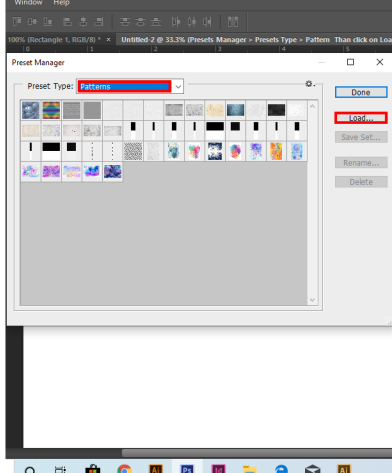
1st Step

First open Adobe Photoshop
Open a new page
Then click Edit Menu
Edit > Presets > PresetsManager



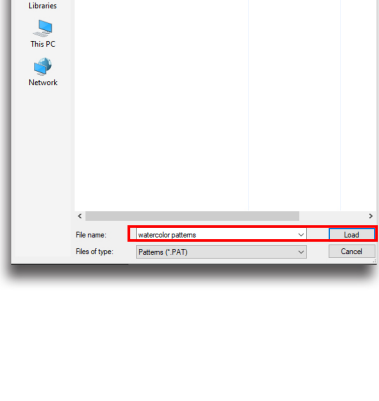
2nd Step

Presets Manager > Presets Type > Brush/Pattern
Then click on Load for load Brush/ Pattern



3rd Step

Load > open Brush /Pattern location
Then select Brush/Pattern location And click on Load



4th Step

The Brush /Pattern was Load Done
Then click on Done.....

