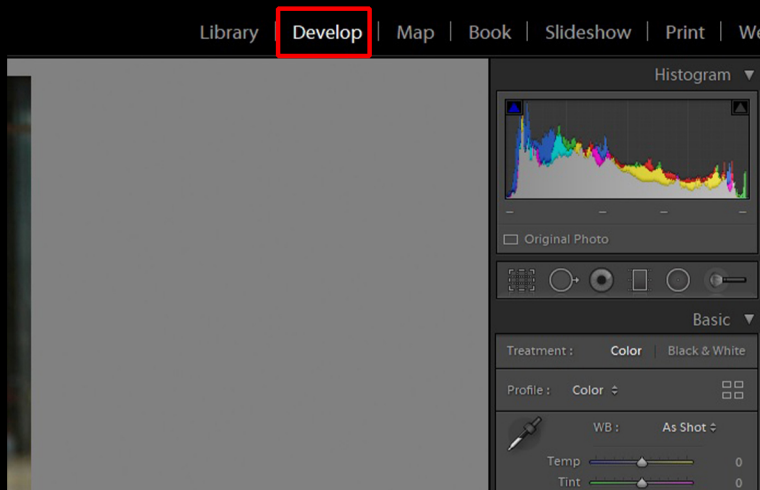


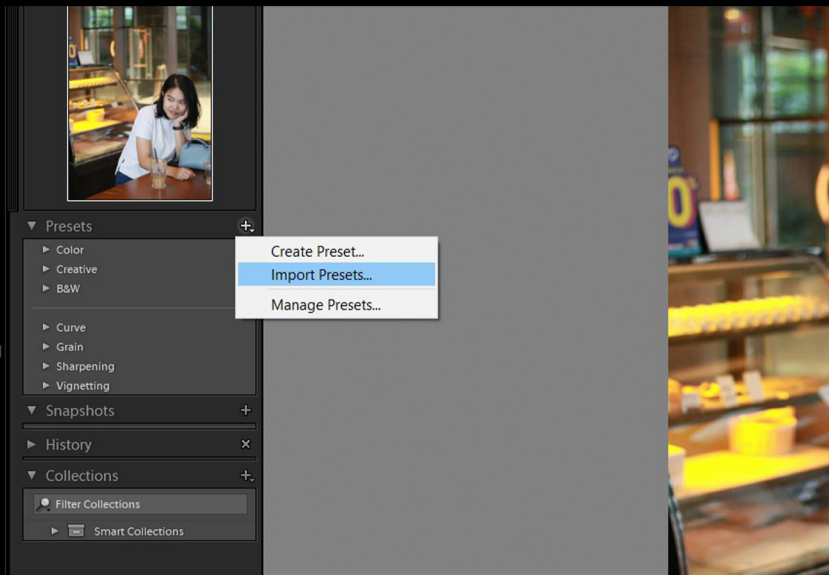
# HOW TO INSTALL LIGHTROOM PRESETS IN DESKTOP

## How to Install Lightroom Presets in Lightroom Classic CC (2018 & 2019)

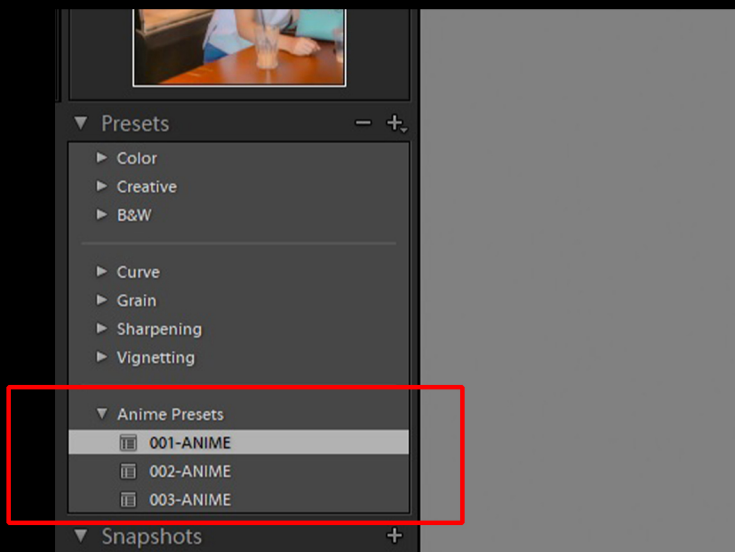
1. Open the **Develop** Module in Lightroom Classic
2. In the left panel, click on the **+** button at the top right of the **Presets** tab.
3. Click on **Import Presets**.
4. In the file window, navigate to your presets folder and select your presets
5. Once you've chosen your files, click on Import.  
Your presets will now show up in the Presets tab!



Step 1 : Click on Develop



Step 2: Click on the **+** button, then **Import Presets**



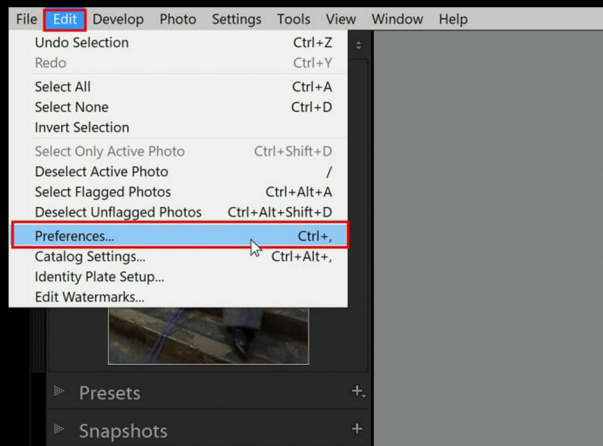
After done importing, your presets  
will show up !

## [ALTERNATIVE METHOD]

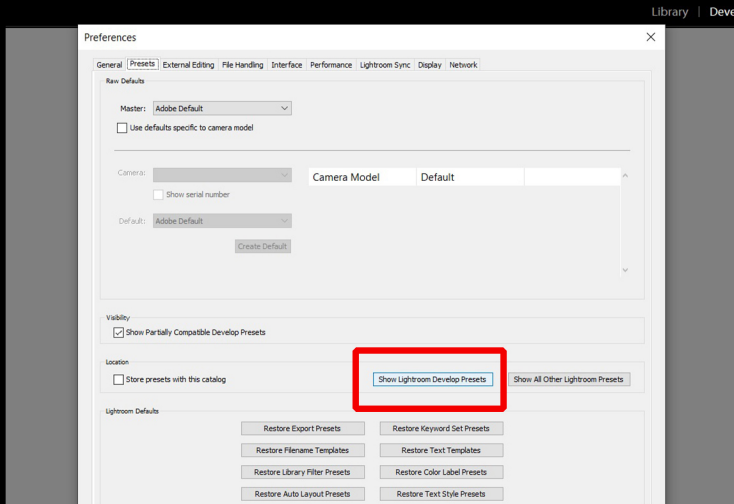
# HOW TO INSTALL LIGHTROOM PRESETS IN LIGHTROOM CLASSIC MANUALLY

You can manually install our presets by copying our preset folder to the Lightroom Presets Folder. Here's how :

1. From the top menu bar, click Edit (Win) or Lightroom (for Mac users)
2. Then select Preferences
3. In the Preferences window, go to the Presets tab
4. Under Location, click on 'Show Lightroom Develop Presets' button.
5. Once the Preset Folder opens, Copy and Paste your presets in the folder.



Step 1 : Click on Edit -> Preferences



Step 2 : In the Preset window, click the button  
“Show Lightroom Develop Presets”

afterwards, double click on the **settings** folder,  
and paste your presets folder in there

(ps: if there is no folder called settings, look  
for a folder called **develop presets** instead)

**Tip:**

***If the preset is nowhere to be seen,  
make sure to restart Lightroom and check  
whether the presets are now available.***