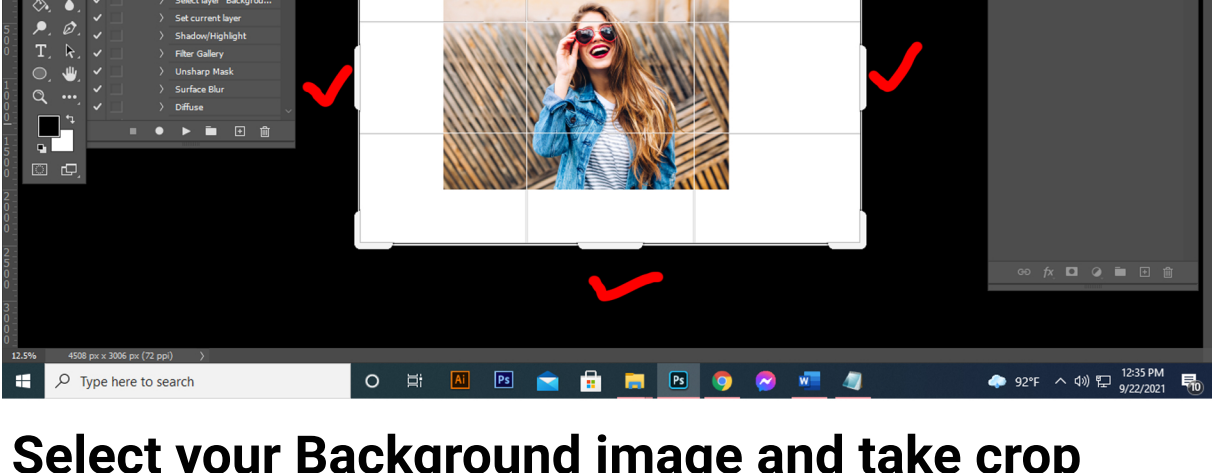


FOR GOOD RESULT :

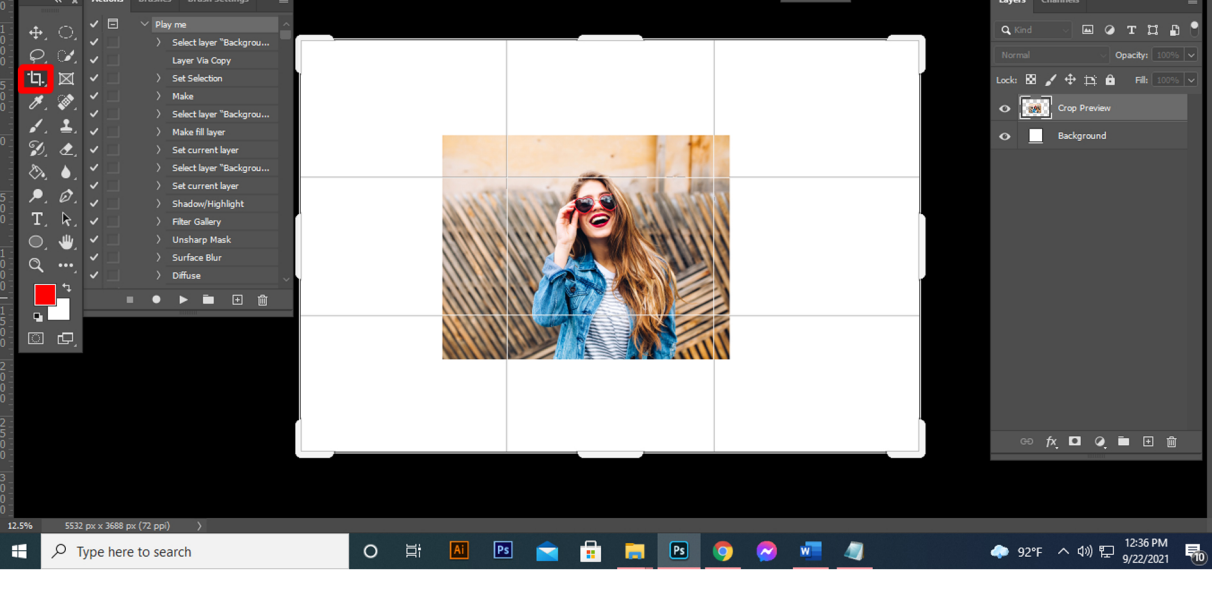
First open an image in Photoshop. Expand the space around your photo for best results. Select your Background image and take crop tool from tools bar then expand all side. Now you need resize your image. For resize image select crop tools and go top menu bar you see W x H x Reso three blank box. Write W 3000px,H 2000px,Resolution 72. Then press enter button.



Open Photo in Photoshop



Select your Background image and take crop tool from tools bar then expand all side.



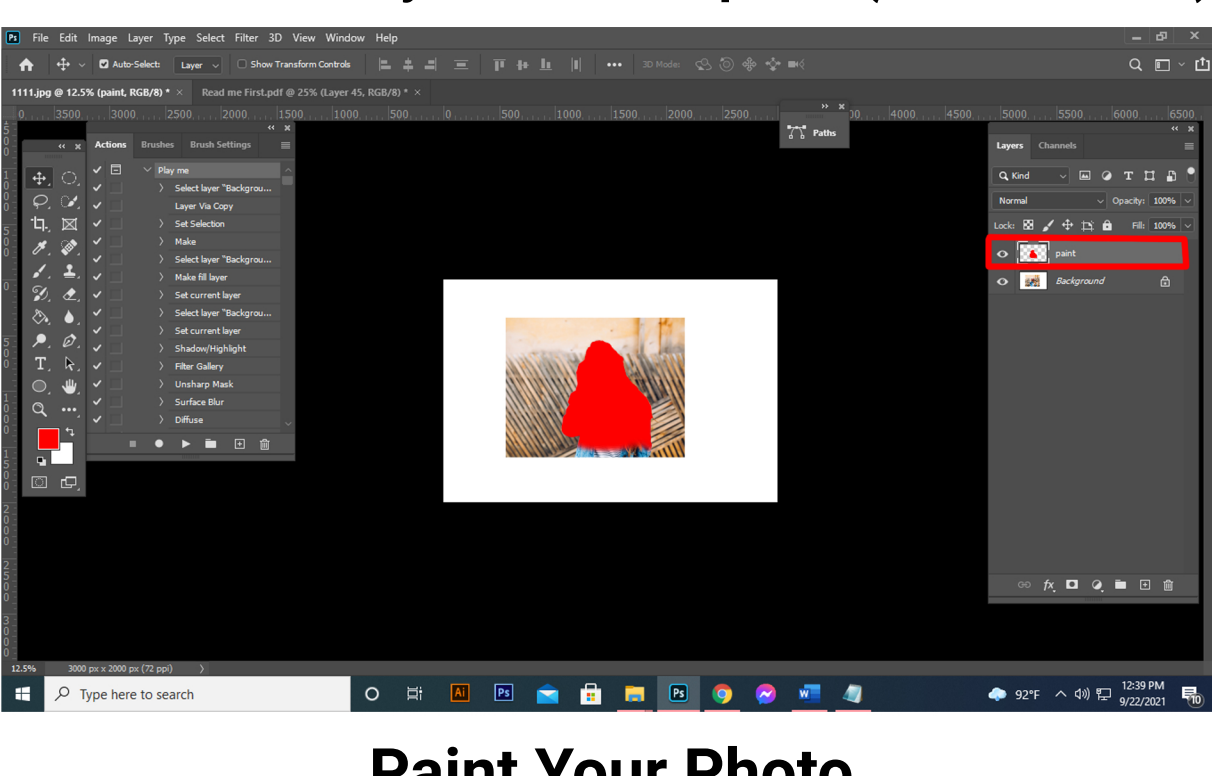
Now you need resize your image. For resize image select crop tools and go top menu bar you see W x H x Reso three blank box. Write W 3000px,H 2000px,Resolution 72. Then

HOW TO Work Action

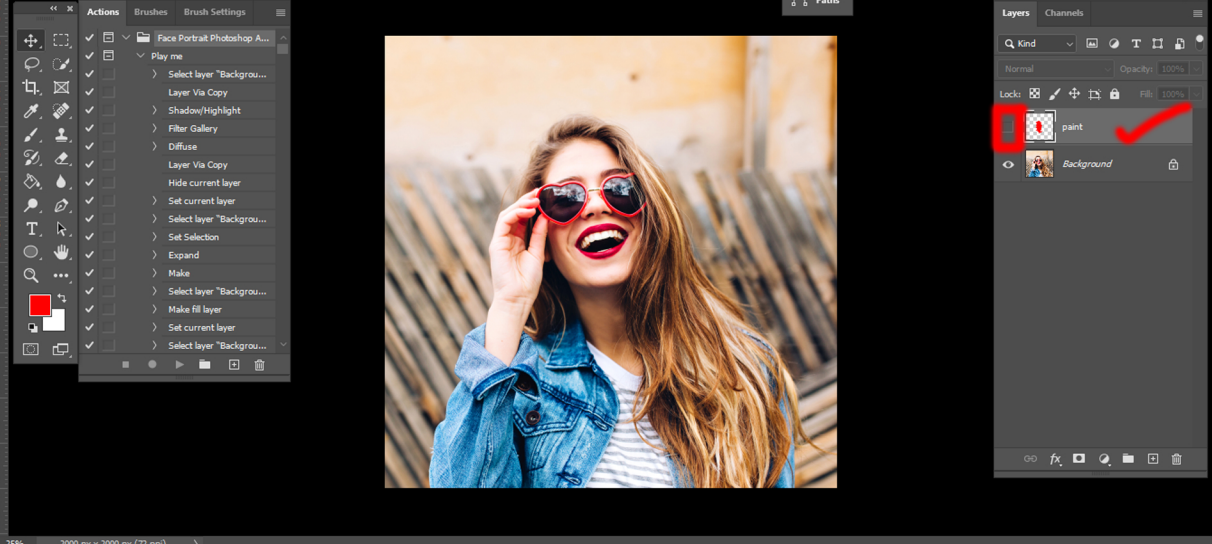
Createt a new Layer and Rename it“paint” (Type in lowercase) and select a soft brush and paint your image and close “paint” layer eye. Keep Selection “paint” layer and click action play button.



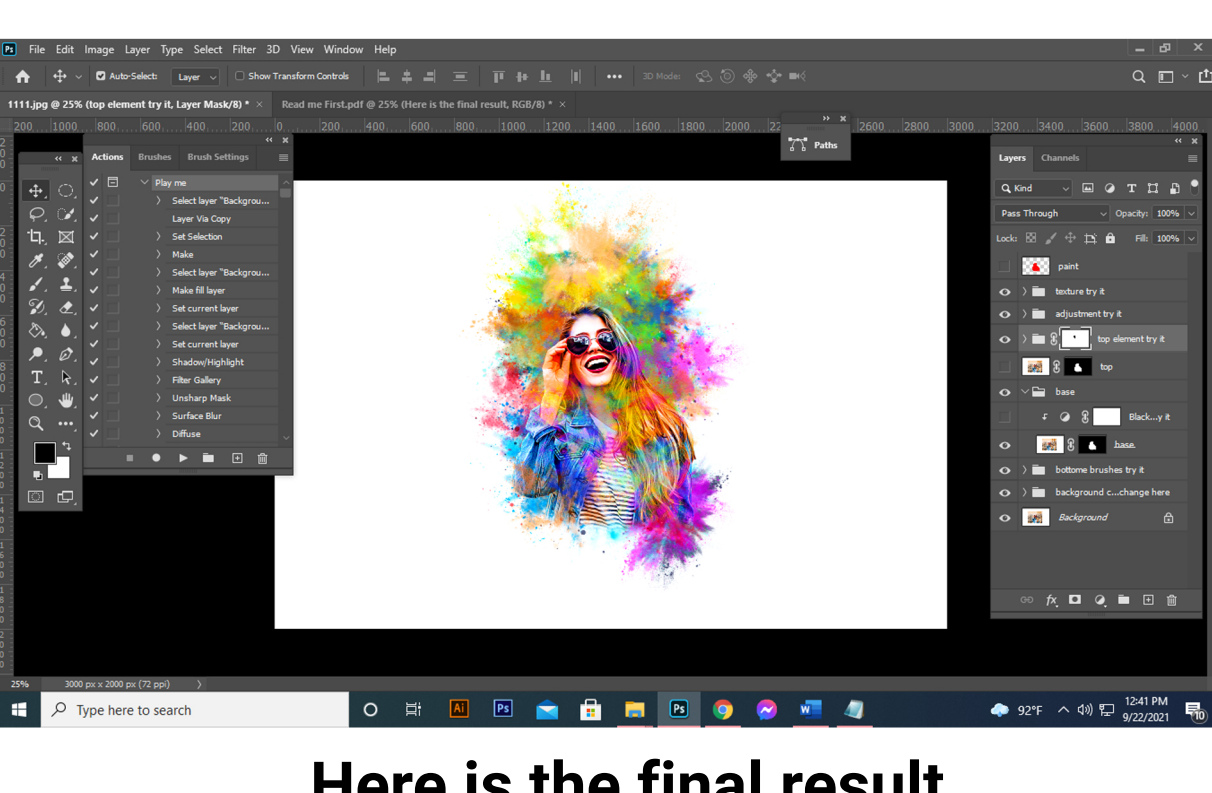
Create a New Layer Rename “paint”(in lowercase).



Paint Your Photo



Close “paint” layer eye & keep Selection “paint” layer then click action play button. The action is run...



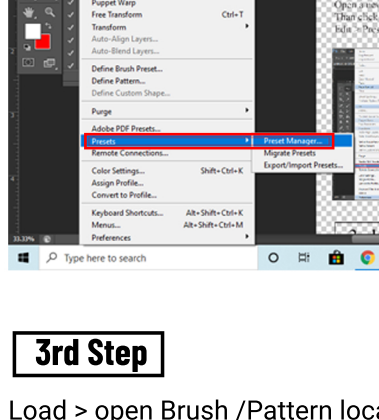
Here is the final result

HOW TO LOAD BRUSH/PATTERN?

1st Step

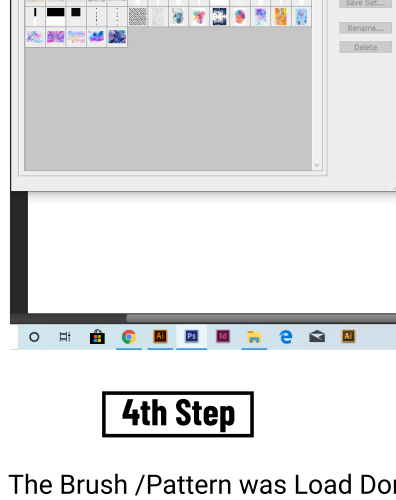
First open Adobe Photoshop
Open a new page
Then click Edit Menu

Edit > Presets > PresetsManager



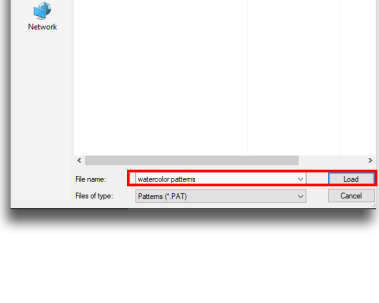
2nd Step

Presets Manager > Presets Type > Brush/Pattern
Then click on Load for load Brush/ Pattern



3rd Step

Load > open Brush /Pattern location
Than select Brush/Pattern And click on Load



4th Step

The Brush /Pattern was Load Done
Than click on Done....

