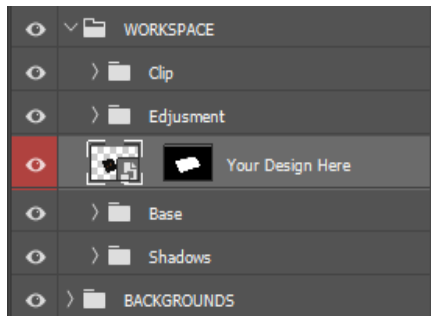


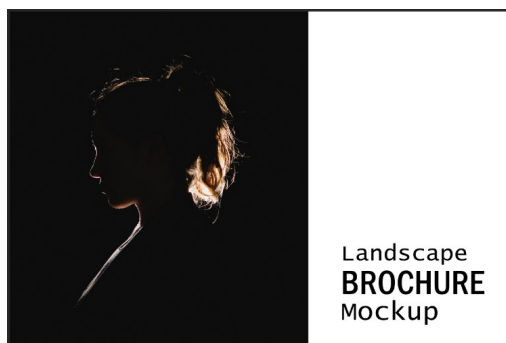
Guide Instruction

Step 1 :

Double-click on layer "YOUR DESIGN..." or "Smart Object thumbnail" (marked with **RED** color), it will open new editing tab in your document. Paste your design inside that tab, save then close the tab. Enjoy the result!



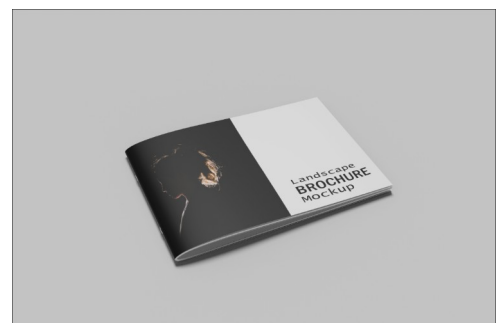
Example:



Blank | **BEFORE :**



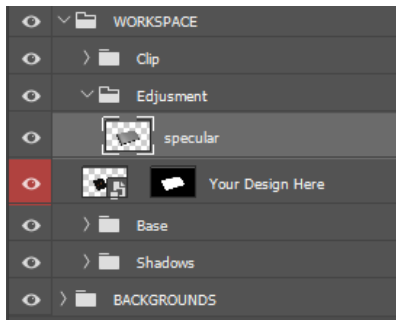
Your Design | **AFTER :**



Guide Instruction

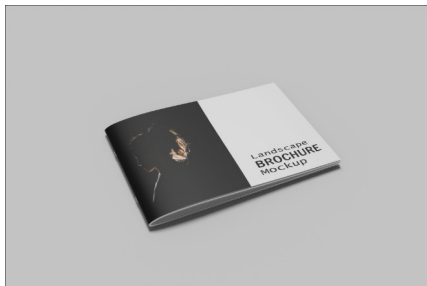
Step 2 :

Just left click “Indicates Layer Visibility” for **ON / OFF** “Specular”.



Example : **ON / OFF** “Specular”

Specular | **ON** : 



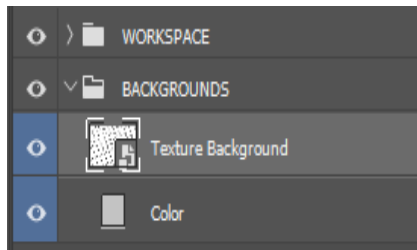
Specular | **OFF** : 



You can edit to + or - specular effects. Use '**Opacity**' or '**Fill**', I have been set it at 50/65% (Opacity) and 100% (Fill).

Guide Instruction

STEP 3 :



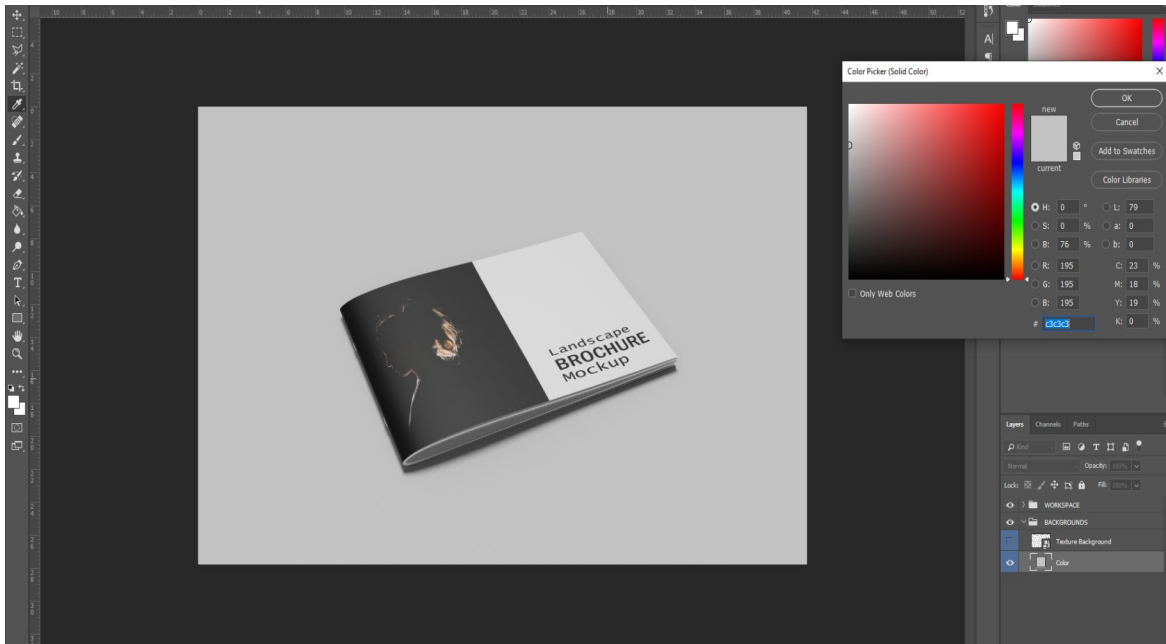
Double-click on layer “ADD TEXTURE BACKGROUND” or “Smart Object thumbnail” (marked with **Blue** color), it will open new editing tab in your document. Drop/Paste your design inside that tab, save then close the tab.



Guide Instruction

STEP 4 :

“Color” Folder : **Background** (marked with **Blue** color), double click “Layer thumbnail” on “Color” to use any color like you need. Then, dissable / click “Indicates layer visibility” on layer **ADD TEXTURE BACKGROUND**.



Thank you for purchasing and please rate this item if you are love it,

Thanks a lot!