

STEP BY STEP



PDF GUIDE

TO CREATING FURRY CHARACTER

STEP 1

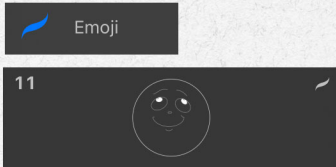


1. CHOOSING A COLOR PALETTE

2. CREATE A NEW LAYER AND FILL WITH BLUE



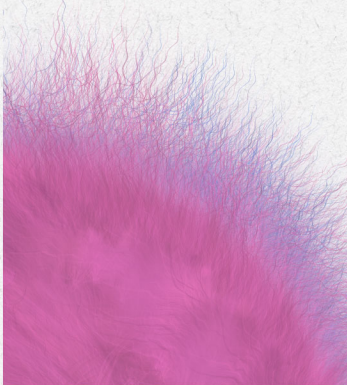
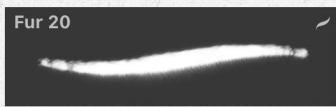
STEP 2



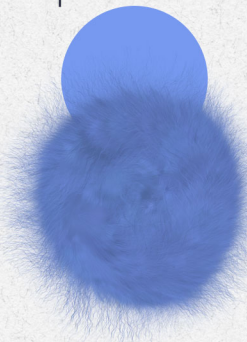
CREATE A NEW LAYER AND CHOOSE FAVORITE EMOJI BRUSH

(CREATE A NEW LAYER EACH TIME, FURTHER BY DEFAULT)

STEP 3



1



2



3



CREATE 3 LAYERS OF FUR BALLS.

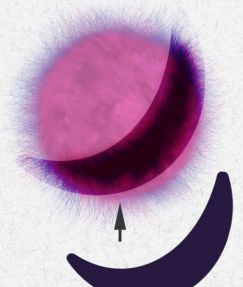
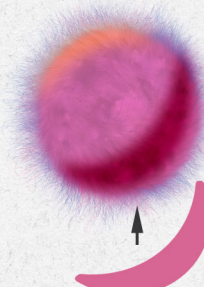
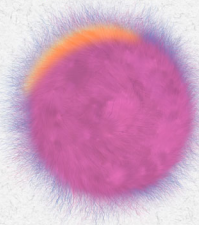
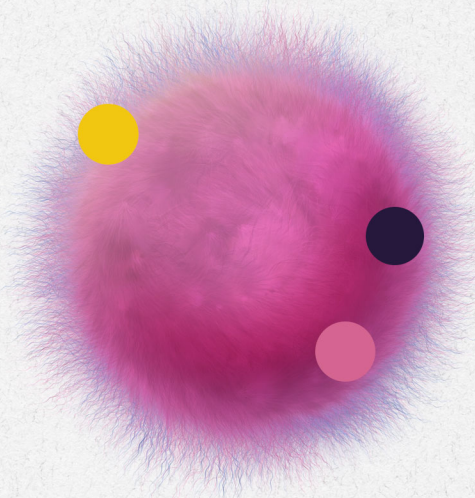
1 LAYER - BLUE

2 LAYER - PINK OVERLAY SCREEN

3 LAYER PINK

FOR THAT THE FUR WAS MORE VOLUME AND REALISTIC.

STEP 4



WE CREATE THE VOLUME OF THE BALL.

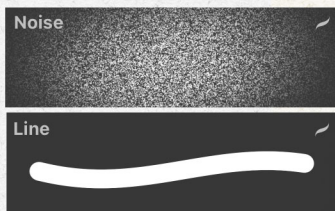
1 LAYER - YELLOW, APPLY GAUSS BLUR, BILD MODE SCREEN OR ADD

2 LAYER - PINK, APPLY GAUSS BLUR, BEND MODE LINE BLUR

3 LAYER - PURPLE, GAUSSIAN BLUR, OVERLAPPING

PLAY WITH BLENDING MODES AND OPACITY FOR THE MOST REALISTIC EFFECT

STEP 5



NEW LAYER. CREATE PLASTICINE LIPS, NOSE, EYEBROWS IN PINK. WE OUTLINE ALL THE ELEMENTS WITH A PINK LINE, CREATE CHIAROSCURO.



STEP 6

UNDER THE LAYERS OF EYEBROWS, LIPS, NOSE, CREATE A SHADOW, (BRUSH NOISE) PINK COLOR, BLENDING MODE -LINEAR DIMMER AND REDUCE THE OPACITY TO 50%

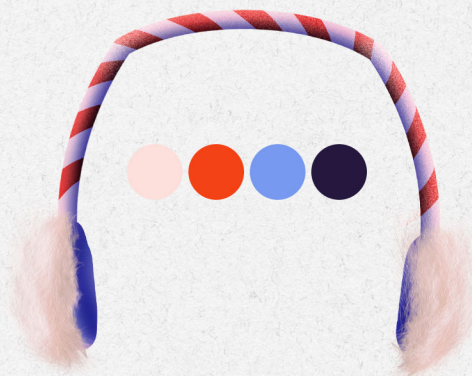
STEP 7



CREATE EYES. ON THE SAME PRINCIPLE AS LIPS. SHADOW - NOISE BRUSH. LIGHT - GLARE, ADD BLENDING MODE

ON THE EDGES OF THE EYE TO ERASE THE FUR WITH A BRUSH, TO CREATE THE EFFECT OF SUNKEN EYES

STEP 8



LAYER FOR CREATING HEADPHONES BELOW PUSH LAYER. WE CREATE A FRAME FROM BEIGE COLOR

THEN CREATE A NEW LAYER WITH A PURPLE SHADOW, ALONG THE LOWER UNLIT PATH AND CLIPPING MASK MODE, BLEND MODE LINEAR DIMMER (PLAY WITH TRANSPARENCY)

THEN THE SAME LAYER, ONLY FOR RED LINES (CANDY ILLUSION) THEN ANOTHER LAYER IS WHITE. SCREEN BLEND MODE, BRUSH NOISE, TO CREATE A SUGAR EFFECT.

7 FUR BRUSH, TO CREATE FUR HEADPHONES. ALSO, ACCORDING TO THE PRINCIPLE OF CREATING A FUR CHARACTER, CREATE A COUPLE OF LAYERS OF DIFFERENT COLORS

READY!