



LIGHTROOM PRESET GUIDE

**** Please unzip the downloaded file before installing the presets in Lightroom.**

Thank You For Your
Support!





How to unzip a file on a Mac

- You can unzip a file on a Mac by double-clicking on it, or by right-clicking and selecting "Open."
- The unzipped file will expand its content into a folder on your desktop.



How to unzip a file on a PC (MICROSOFT)

- Locate the zipped folder that you want to unzip (extract) files or folders from.
- To unzip all the contents of the zipped folder, press and hold (or right-click) the folder, select **Extract All**, and then follow the instructions.



Lightroom Preset File Types

- **.XMP** or **LRTemplate** format are for Lightroom Desktop, not Mobile.
- **LRTemplate** files are only supported by Lightroom 6 and earlier and Lightroom Classic prior to version 7.3.
- **LRTemplate** files were replaced by **.XMP files** with the release of Lightroom Classic CC v7.3 in April 2018.
- Mobile presets come in a **DNG** format.



Lightroom Presets

*****Kindly Note:**

Each photo is unique with regards to how it was shot (settings, lighting and camera). All these factors play a role in how the photo turns out when the preset is applied.

Feel free to tweak the presets slightly to suit your photo.



How do I install new presets into Lightroom Desktop

1. From the menu bar, choose **File > Import Profiles & Presets or Import Development Profiles & Presets.**
2. In the Import dialog that appears, browse to the required path and **select the preset file** (*.XMP or LRTemplate*) that you want to import.
3. Click **Import.**
4. You can **apply your presets** on your photos in the Develop or Edit Section in Lightroom.
5. If you have **Lightroom Mobile** connected to your Lightroom account your presets will automatically be synced.



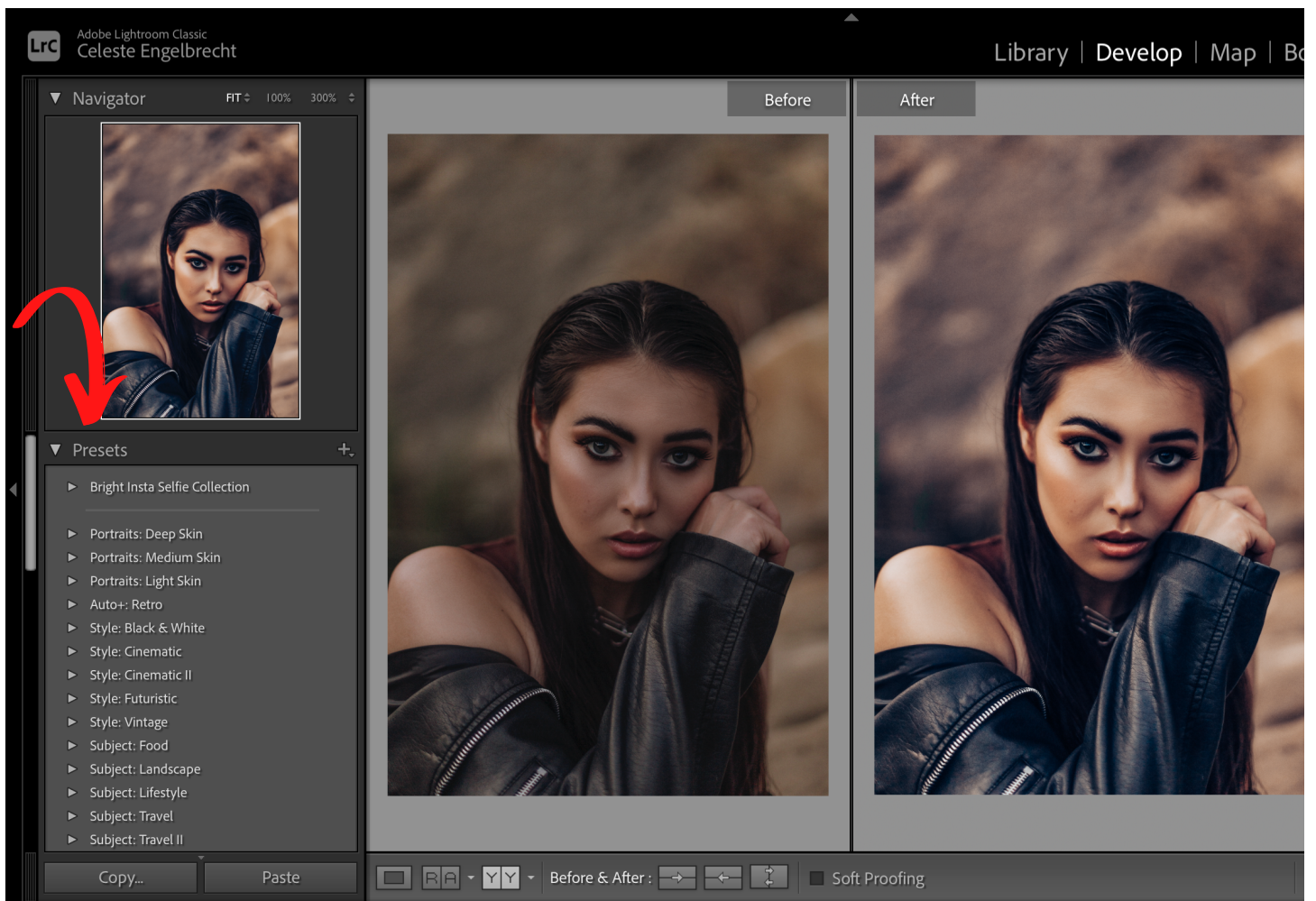
How To Apply Your Lightroom Desktop Presets To Your Photo

First select the photo you want to apply the preset to.

Next ...



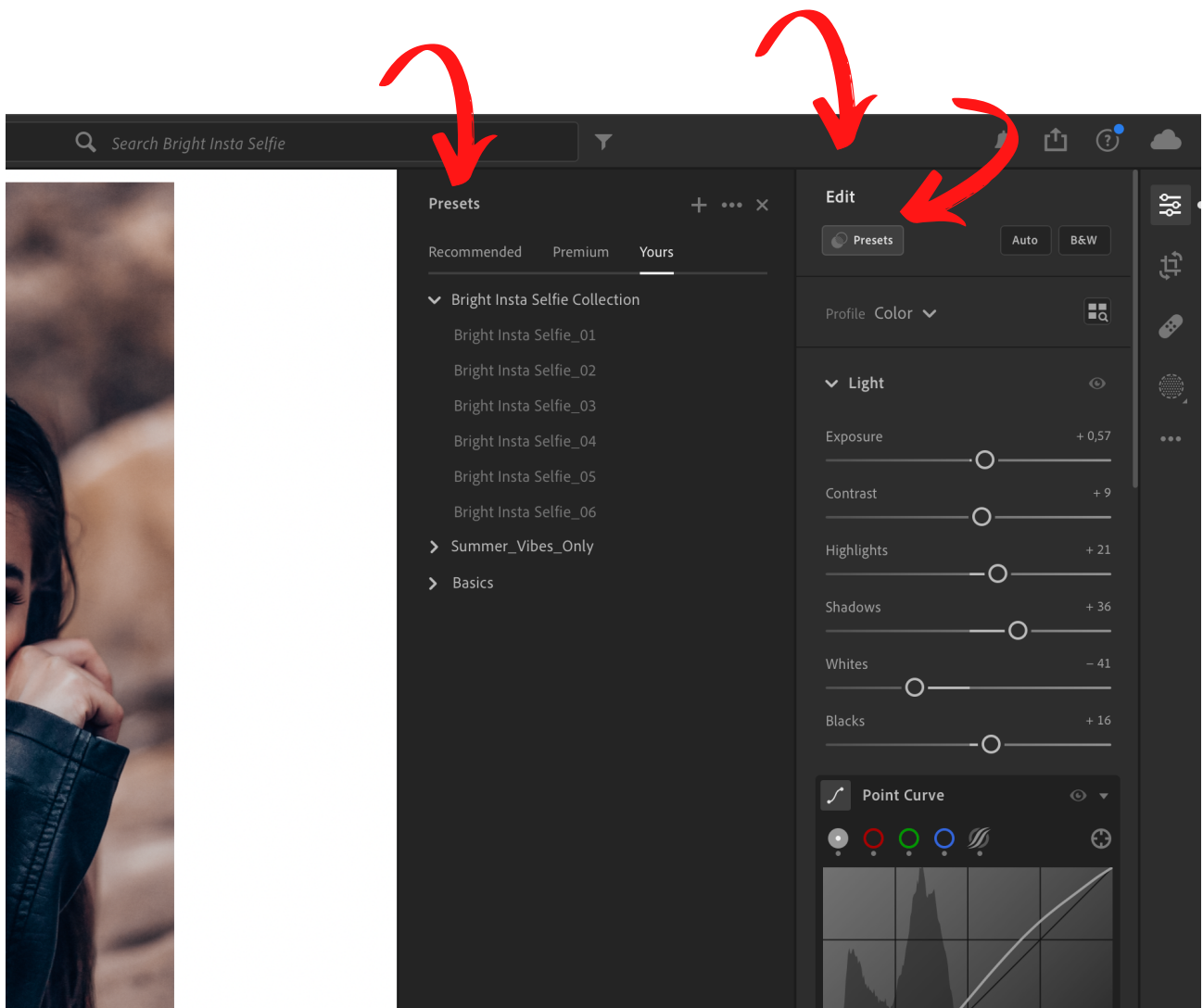
If you are using **LrC** select **Develop mode** at the top and then select the **Preset** you want to use. Your Preset should then be applied to your photo.





If you are using **Lr** select Edit at the top and then select **Preset**.

The **Preset** tab should open and you can select the preset you want to apply.





How To Install Lightroom Mobile Presets

Step1

Download the DNG files to your phone. They should appear in your camera roll.

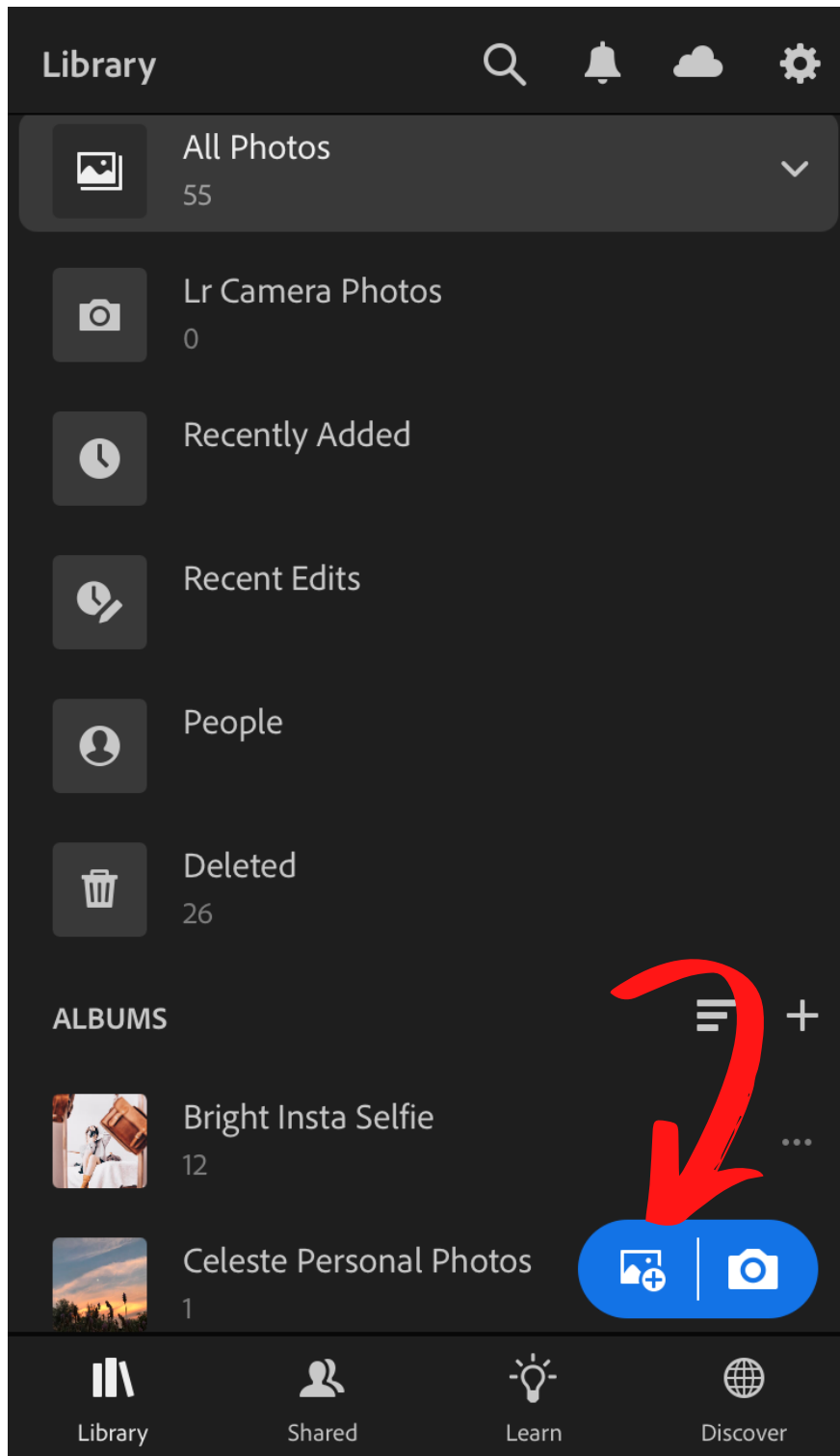
Step2

Import preset files (DNG) into Lightroom Mobile.

** The DNG files serve as “*preset carriers*” and now you just need to add them to **Lightroom mobile** and save presets out of them. If you go into your photo stream and see them as blank picture files, don’t be alarmed – that’s how they should look.

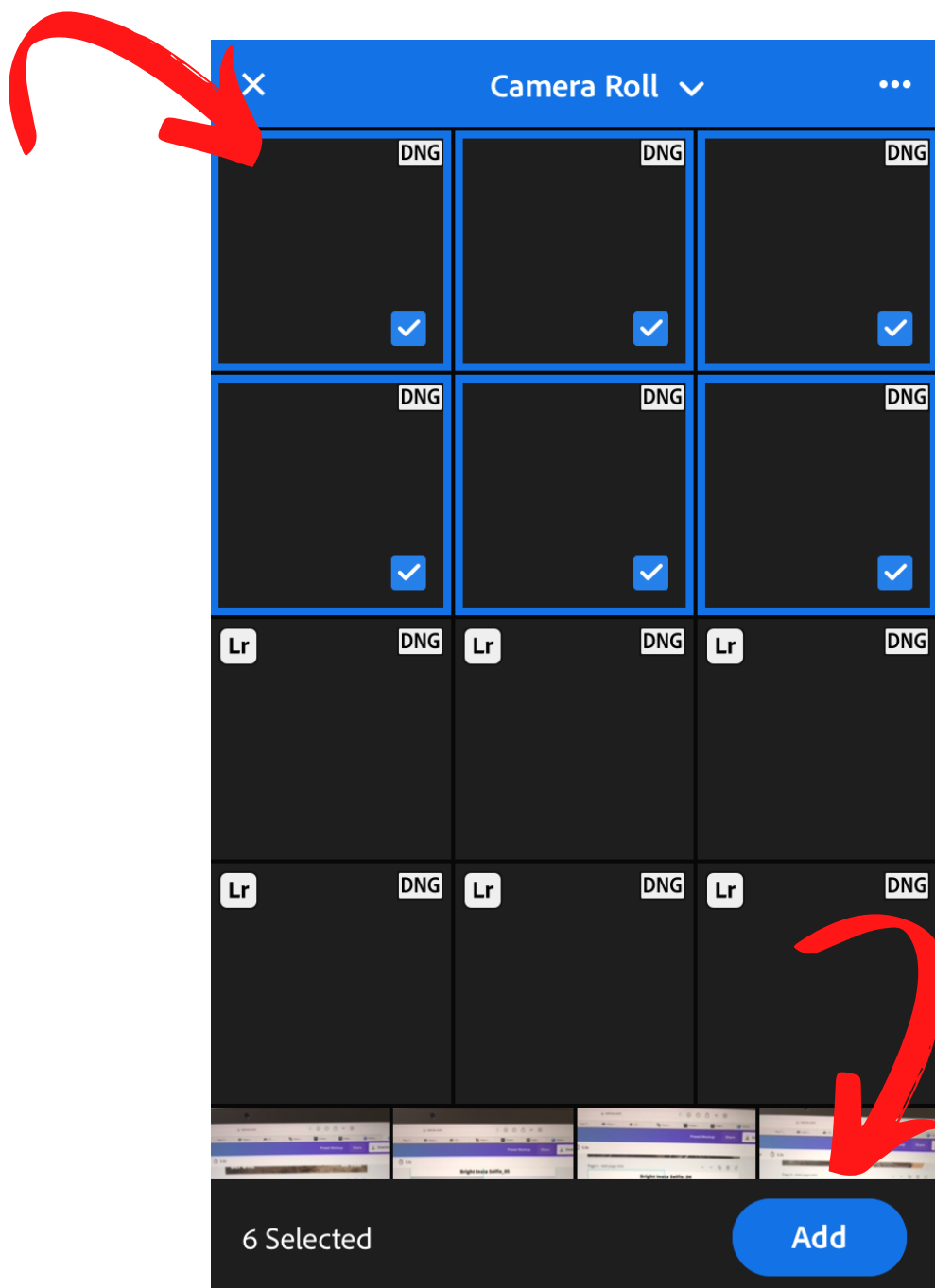


Import preset files (DNG) into Lightroom Mobile.





Select all the DNG preset files and tap **Add**.





Step 3

Locate the files and open one DNG file at a time inside the Lighroom app.

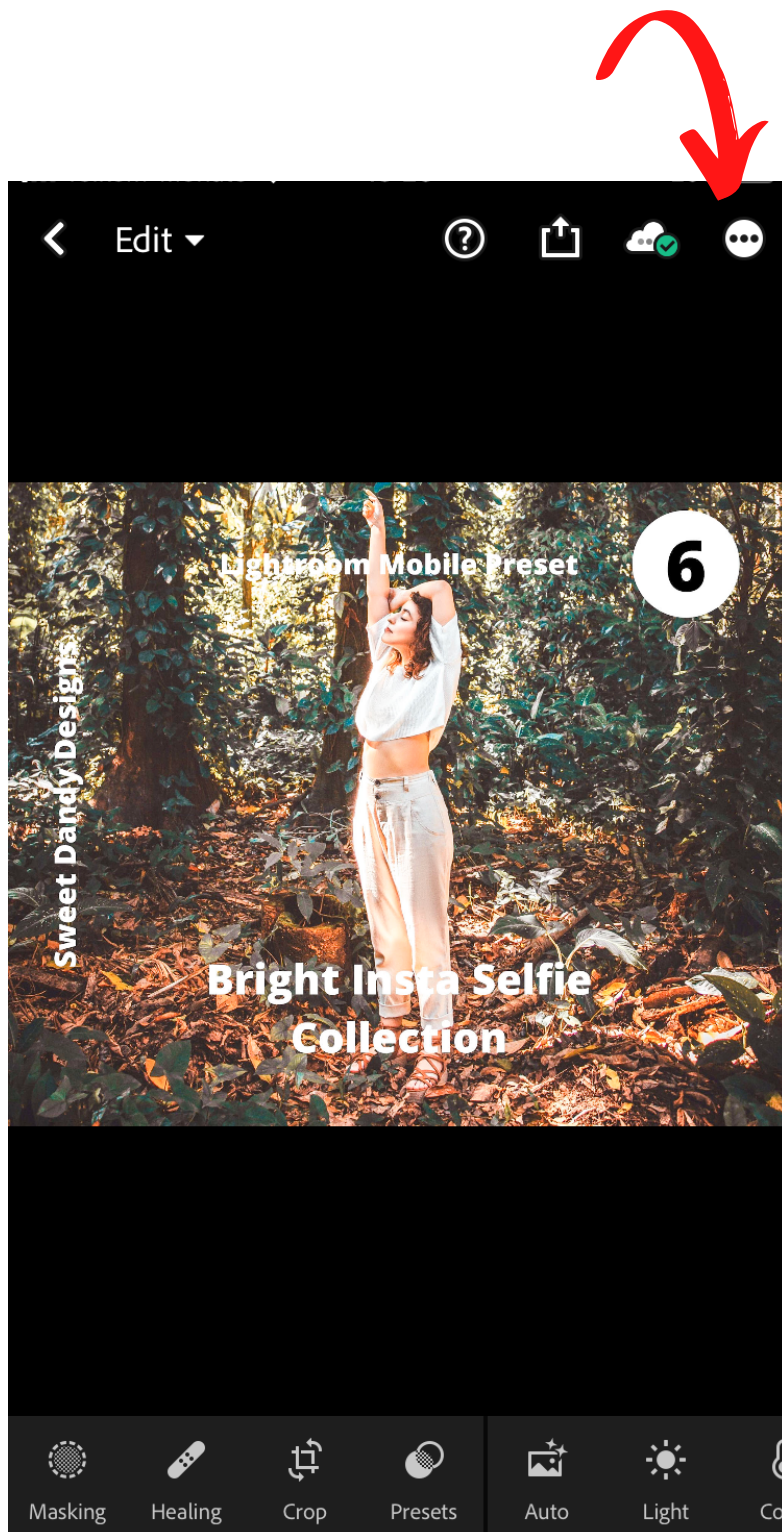
Now tap on the 3 dots icon at the top right side of the screen and then tap on Create Preset.

Name your preset and tap on the Check.

**** Repeat this until all your Presets are added.**

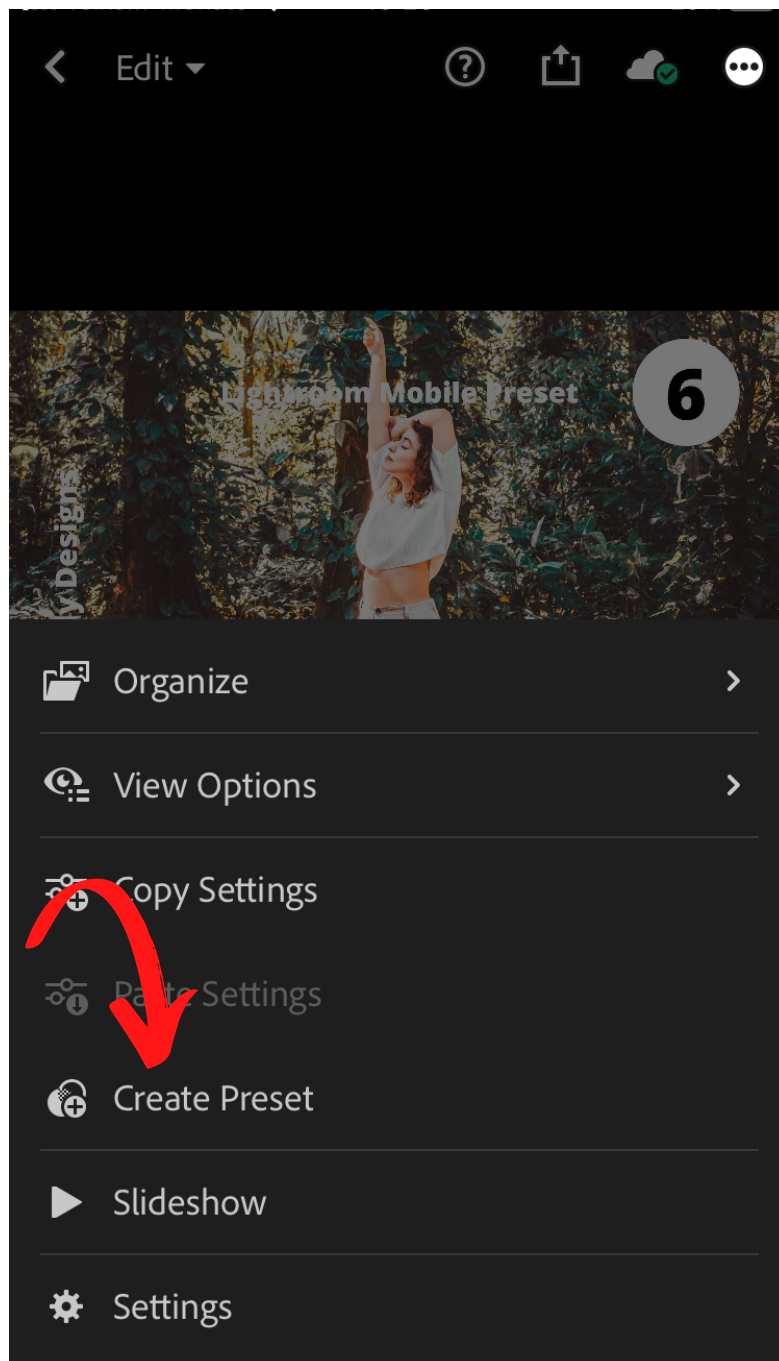


Tap on the **3 dots icon** at the top right side of the screen





Then tap on **Create Preset**:





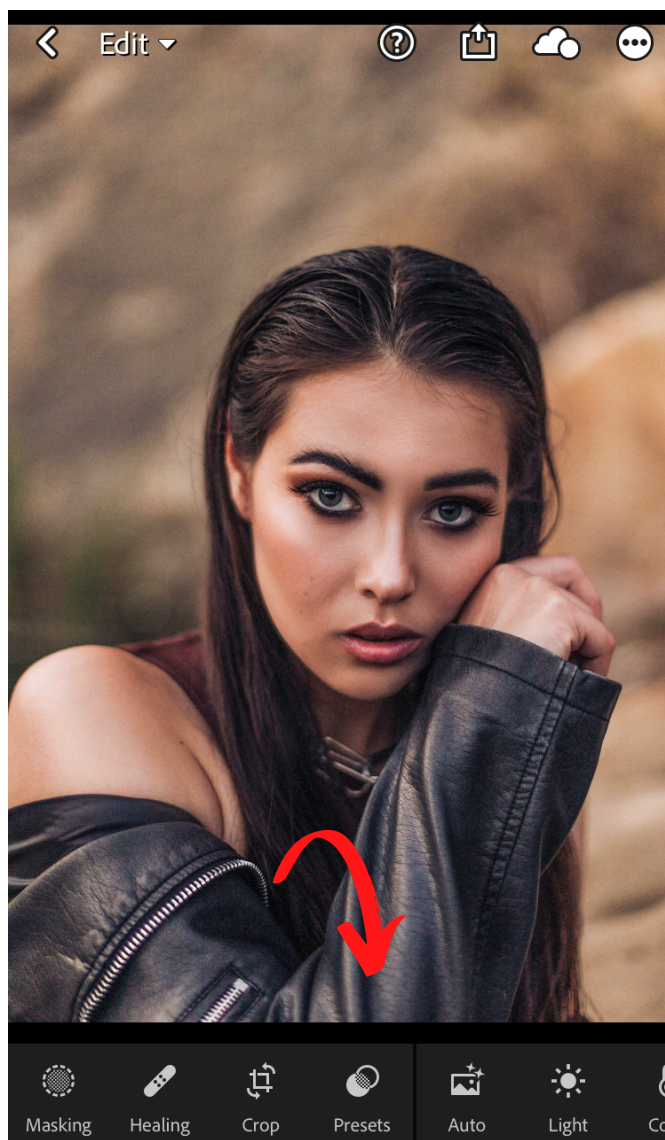
Name your preset and tap on the **Check**.

The screenshot shows a dark-themed 'New Preset' dialog box. At the top, there is a title bar with a close button (X) on the left and a checkmark button on the right. Below the title bar, the 'Preset Name' field is highlighted with a red arrow pointing to it; the field contains the text 'preset 1'. Below this, there are sections for 'Preset Group' (showing 'User Presets' with a dropdown arrow) and 'Select' (showing a dropdown arrow). A list of preset categories follows, each with a checkbox and a progress indicator: 'Profile: Color' (checked, 7/7), 'Masking' (unchecked), 'Light' (checked, 5/5), 'Color' (checked, 5/5), 'Effects' (checked, 5/5), 'Detail' (checked, 3/3), 'Optics' (unchecked, 0/3), and 'Geometry' (unchecked, 0/2). A red arrow points from the top right of the dialog box to the checkmark button in the title bar.



How To Apply Your Mobile Presets To Your Photos.

Select the photo you want to apply the preset to and tap on **Presets**.

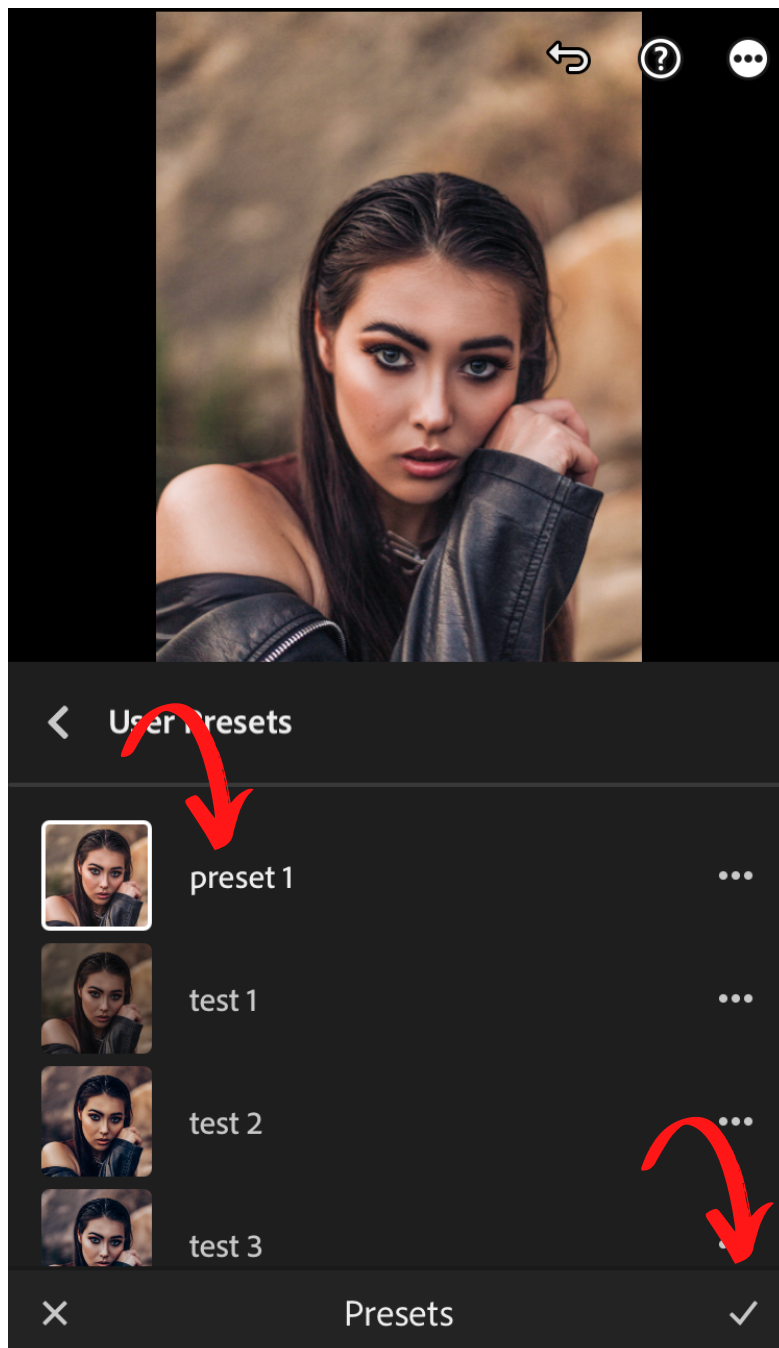




Select the **Preset** you want to use and tap on the **check**.



... And You're Finished





Thank you!

For more Lightroom Presets please
visit my Etsy Store

SweetDandyDesigns