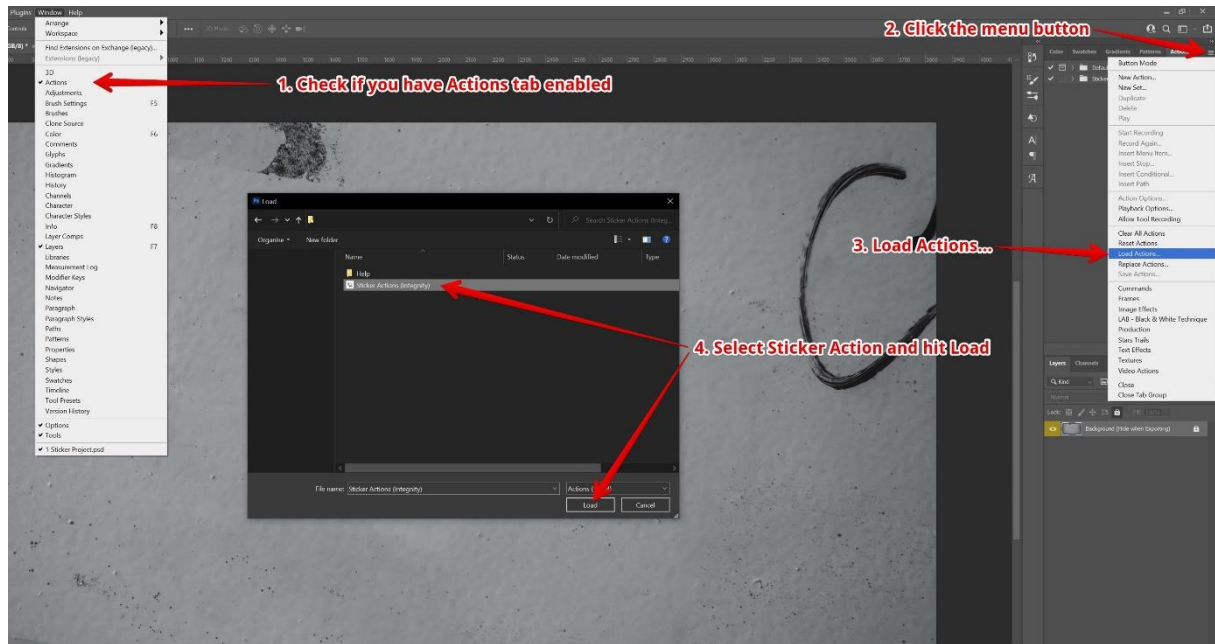


# Tutorial

Video tutorial : <https://youtu.be/yyOxMJkgwWo>

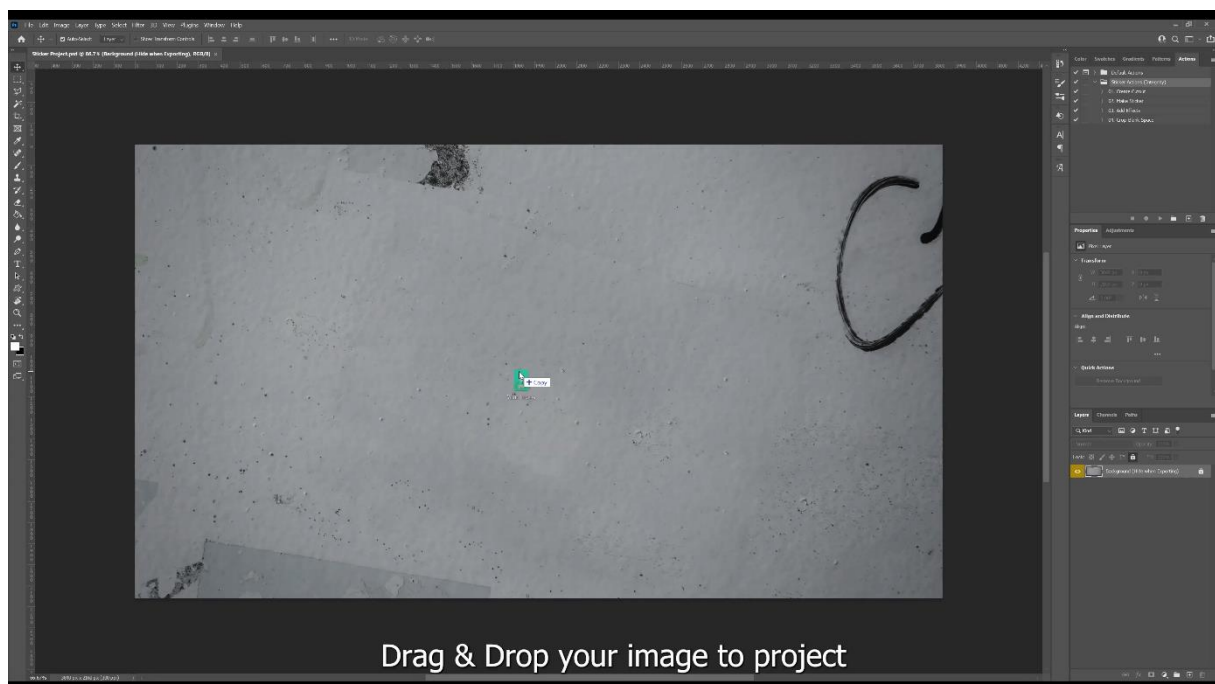
## 01. Load Actions

First check if you have Actions tab enabled. Then load our sticker actions into Photoshop. One actions group will be added, with total of 4 actions.



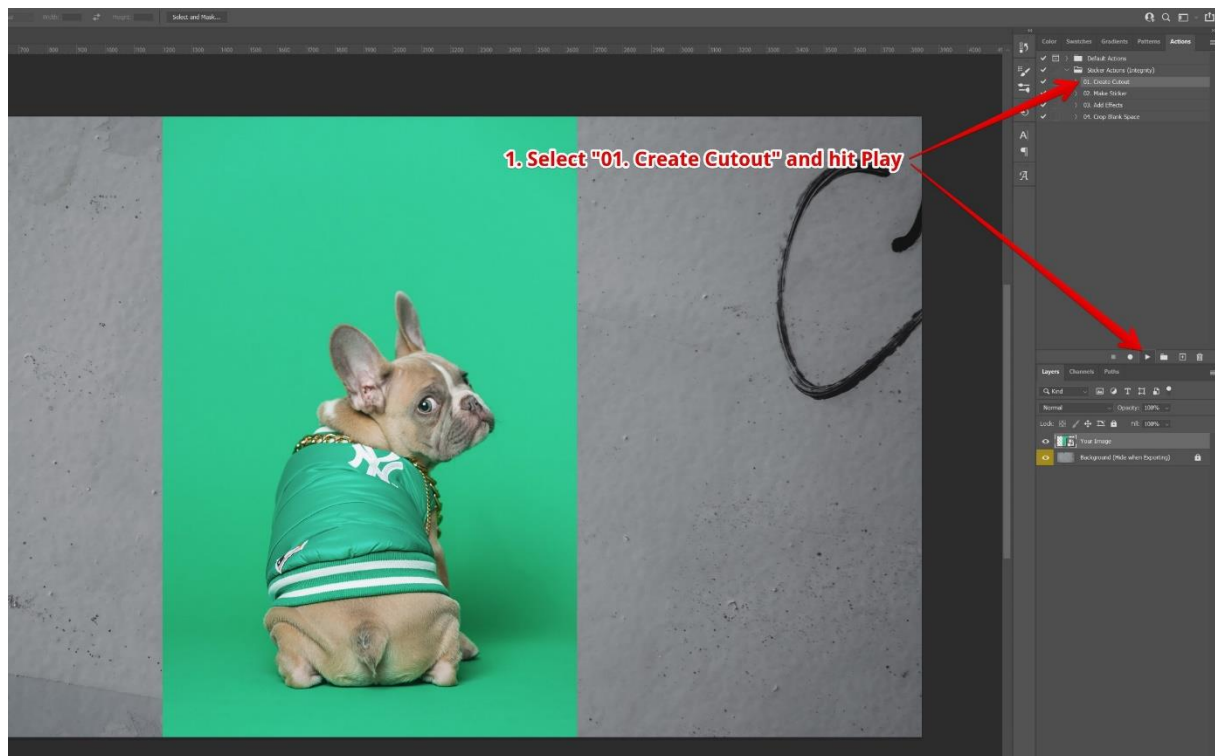
## 02. Add image

Simple, just drag & drop your image to project.



## 03. Create Cutout

In this first step you'll create automatic cutout from your image. If you already have your cutout (layer with a mask), you can skip this step.



## 04. Make Sticker

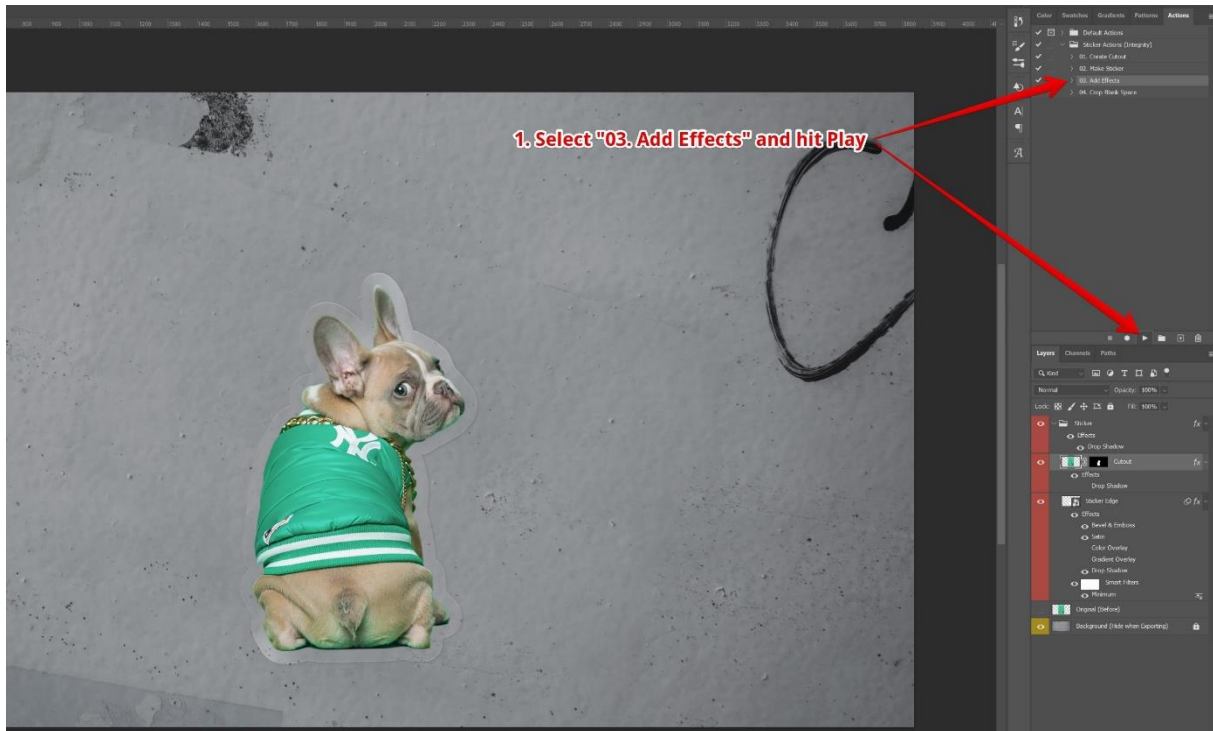
If you're happy with the cutout, play the 02. Make Sticker action. If you're not happy with the cutout, edit the Cutout Mask with a brush tool, then play the action.



You'll find all effects and sticker options explained, and how to modify the sticker look in the "Effects Explained" section below.

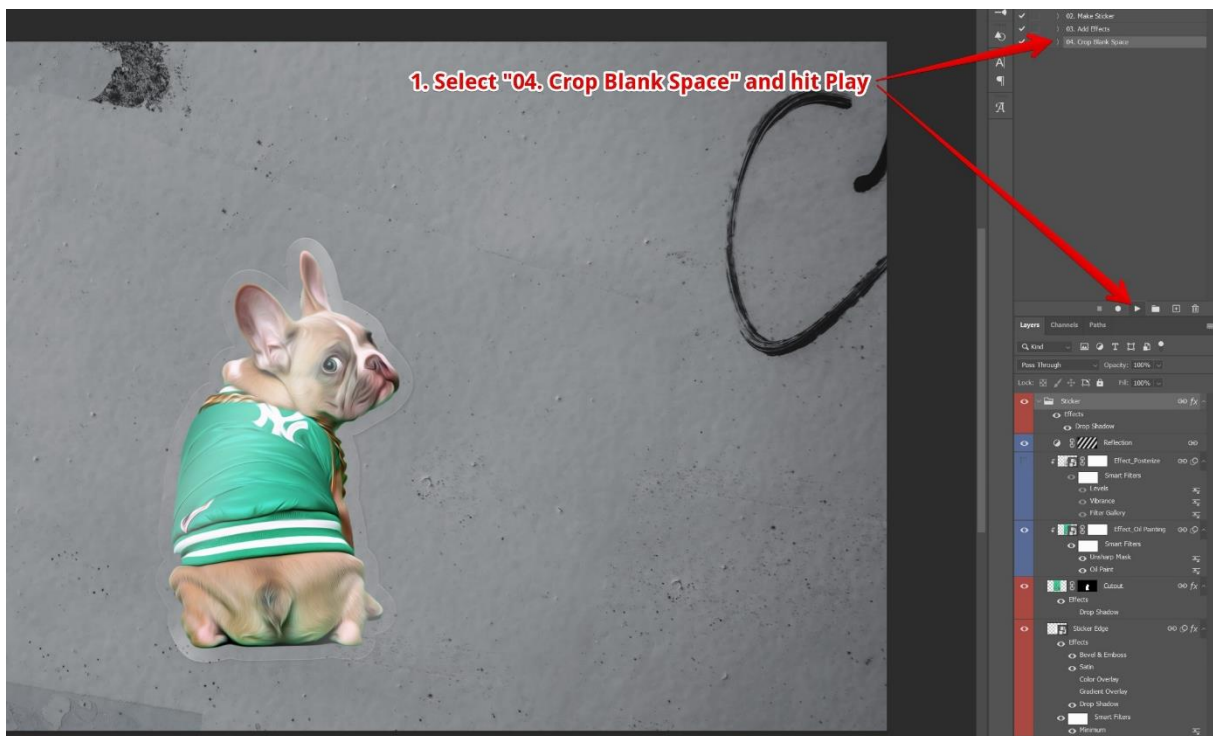
## 05. Add Effects

Effects will add more cartoon-like look to your sticker. You can of course skip this step if you want to keep it real.



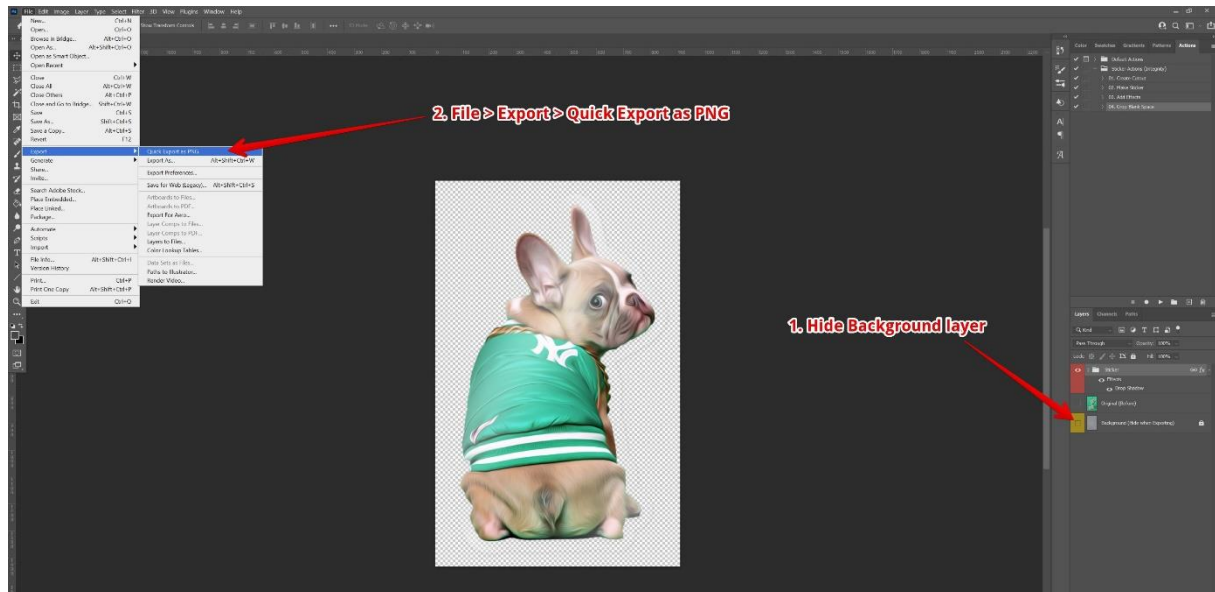
## 06. Crop Extra Space

If you're satisfied with the sticker and want to export it, you'll find the 04. Action useful. It will crop the extra space around the sticker.



## 07. Save as PNG

And the final step is to export the sticker. Don't forget to hide the background and save it as PNG.



## Before & After



You'll find all effects and sticker options explained, and how to modify the sticker look in the "Effects Explained" section below.



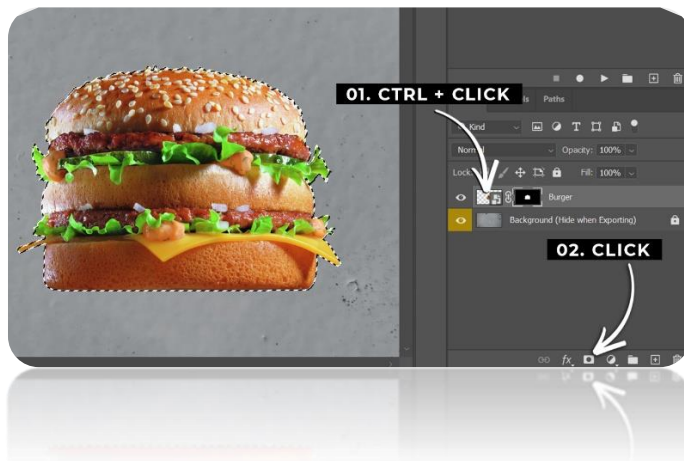
# Q&A

## What if I already have masked image or PNG?

No problem, you don't need to use the auto-cutout action. Only thing that's required is a layer with a mask. So if you have layer with a mask, simply play the second action "02. Make Sticker".

If you have .png image or layer without a mask, it will take you only about 3 seconds to make it work. Do this :

- Hold ctrl / cmd + click on a layer's image box
- Now Click on the Mask button



Now just skip the first action "01. Create Cutout" and play the "02. Make Sticker".

## Can I use those actions in any project?

You can. The Sticker Project.psd (3840x2160px) that's included is there to make things problem-proof. You know, the values of all effects (drop shadows, width of the edge, bevels etc.) are set and recorded in that 4K resolution, so if you're OK with the result not being the same as in the pictures or tutorial, you can use it in any project. But the look of the sticker may look a bit different.

That's of course no problem, because you can tweak every effect used and make it look just like you want.

## Can I skip the 03. Add Effects?

Sure :)

## Can I rename some layers?

Don't rename any created layers if you're not 100% done with our actions. Do it only if you don't plan to play any other action. Otherwise there will be some errors as photoshop will be looking for a layer that's not there.

# Effects Explained



## Bevel & Emboss

Slight highlight on the edge of the sticker.

## Satin

Reflection-like highlight. Not visible on solid white.



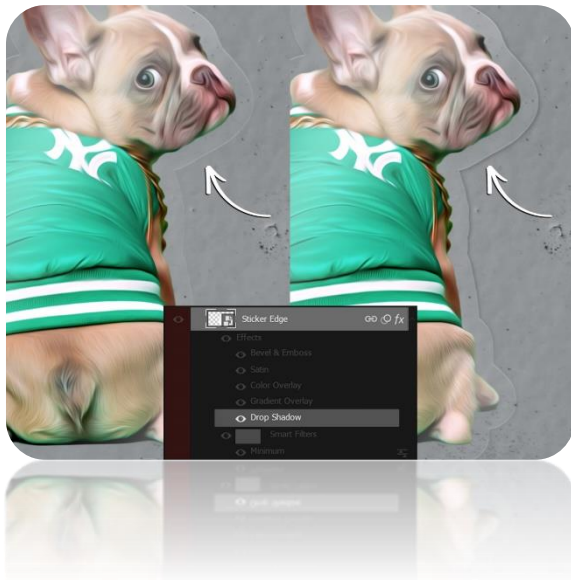
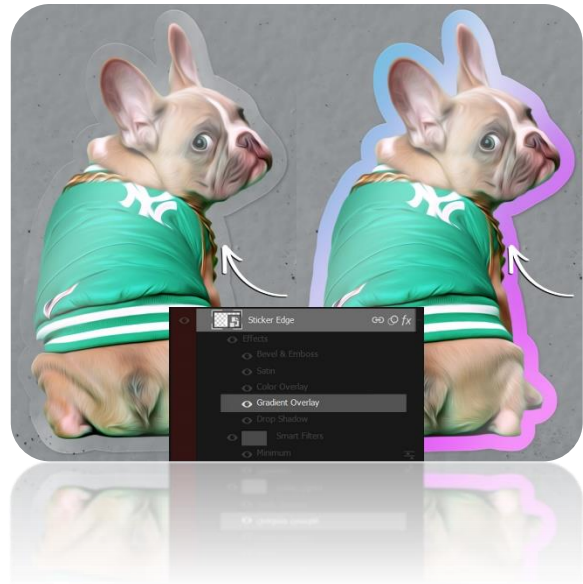
## Color Overlay

Great if you want simple solid color sticker. Double-click "Color Overlay" to change the color.

## Gradient Overlay

Not a solid color person? Gradients are for you!

Again, double-click to change the gradients.



## Drop Shadow

Just a slight shadow to boost depth.

## Minimum

Double-click and you can change size of the sticker.





## Drop Shadow (Cutout)

Cutout's shadow. By default it's turned off, but if you want more 3D look, turn it on.

## Effects



## Reflection

Simple reflection to make the sticker more realistic. By default the opacity is on 45%, but it's up to you of course.

Tip : If you want to move the reflection, unlink the mask and simply move it. Don't forget to link the mask again.



# Tips

## Hide all opened effects

Hold Ctrl + Alt and Click on any arrow. Save space.



## Fix blurry edges

This usually happens with the hair (with flyaways). Mask around the hair is not sharp and can be a problem for the sticker's edge.

### Quick fix will be :

1. Select **Sticker Edge** layer
2. Filter > Sharpen > Unsharp Mask
3. Amount : 500, Radius : 1000, Threshold : 0

If needed, add the same effect twice.

Another option will be not to use auto-cutout, but masking it yourself, more precisely.

I hope you'll like this action. It was fun making it :)

Still need help? [david.integrity@gmail.com](mailto:david.integrity@gmail.com)

Photos from Unsplash.com

Thanks @karsten116 & @tikh