

Square Food Box Packaging Mock Up

(v5.3)

- High Resolution PSD Mock up
- High quality/resolution file | 5400x3600 | 18"x12" | 300dpi
- Box die-lines included
- Folded Shape dimensions:
5" x 5" x 2.75" (W x D x H)

TO PLACE YOUR ARTWORK:

In the layers Window, Open the folder in the layers window called ARTWORK IN HERE

① Double-Click the Smart Object layer to add your artwork in. Paste/Place your design on the window that opens. **Save that artwork window** and close -- your artwork will automatically appear on the mock up

② Toggle visibility to show custom color. Double-Click the thumbnail to Change Color

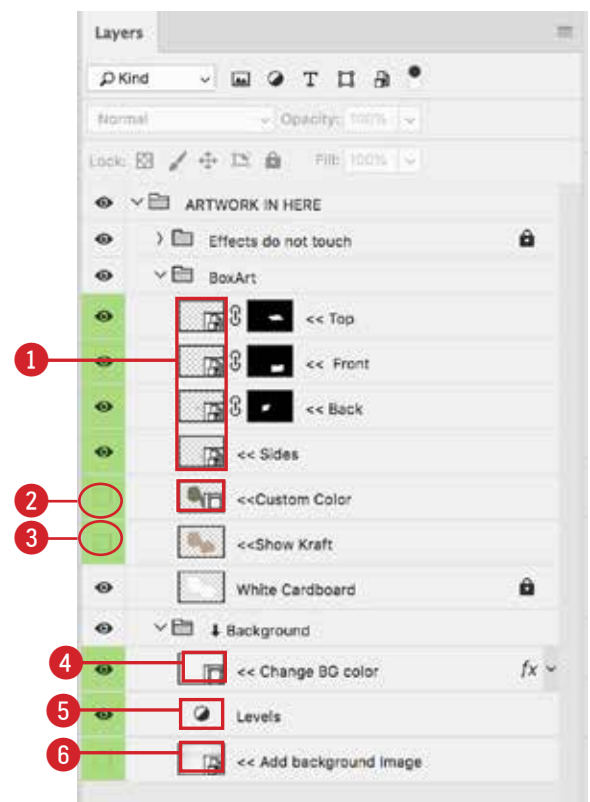
③ Toggle visibility to show or hide Kraft material

BACKGROUND

④ Double-Click the thumbnail to Change the Background Color

⑤ Double-Click the thumbnail to adjust BG levels

⑥ Double-Click the thumbnail of the Smart Object layer to add your background image in. Paste/Place your design on the window that opens. Save that artwork window close -- your artwork will automatically appear on the mock up.



This item is part of the **Paper Food Boxes Mock Up Volume 5**

- Minimalist background to make your project stand out
- Change Background Color
- Editable smart objects with layers Fully Named
- Easy to use and Impressive presentation for clients
- Photo Realistic Production
- Please see the preview samples
- Help guide included
- If you have some questions, send an email to: themockupartist@inc-design.com

