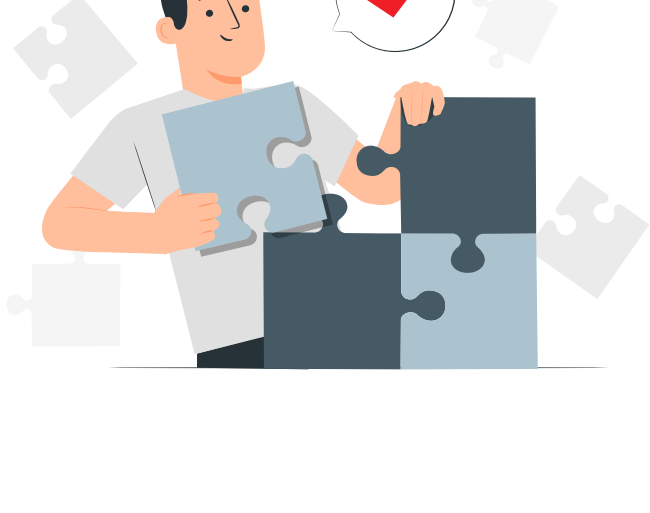




INSTRUCTIONS

Please consult this document before opening the .psd files, especially if you're still learning Photoshop.



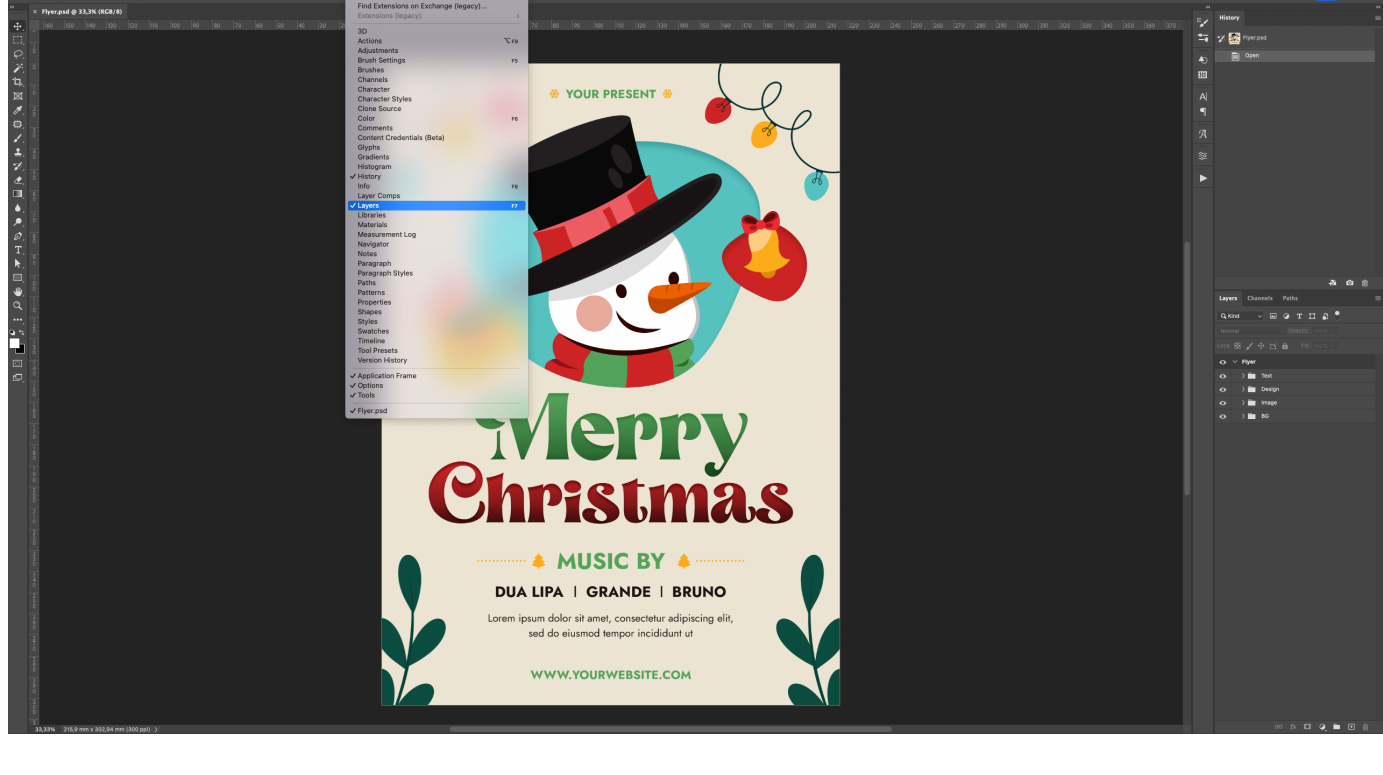
INSTALL FONTS

I have included a text file which includes links to the font files. Please download and install the font files first before opening the template file.

LAYERS PANEL

The layers panel is where you'll find everything in the template that is editable. If the layers panel is not visible, you can find it by going to Window > Layers in the menu bar and ensuring Layers is checked.

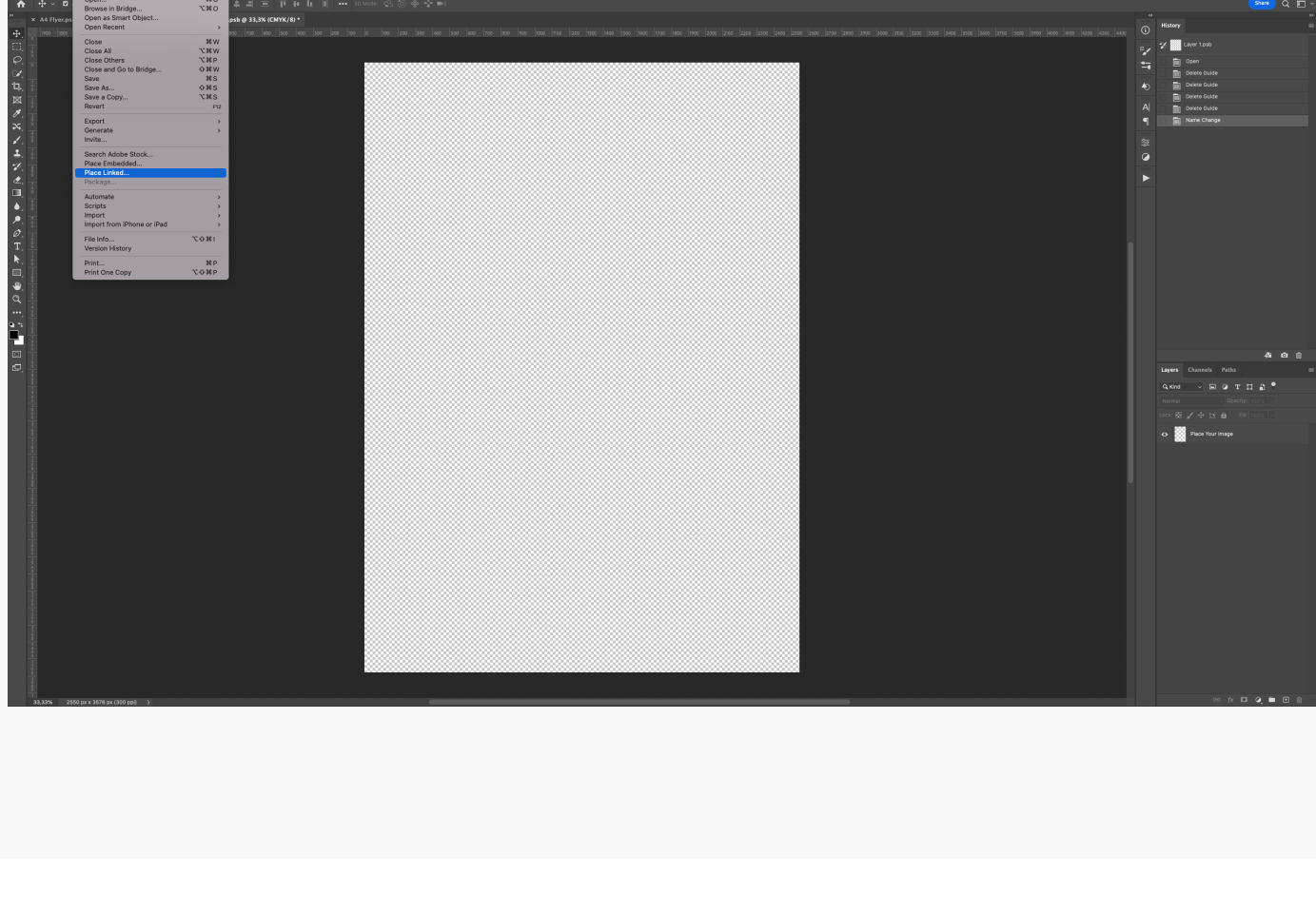
To make the layers easy to navigate, they have been divided into clearly labelled folders and tabs. To expand any of the groups, click the small arrow on the left hand side of the folder. This will display all the enclosed layers.



ADDING IMAGES

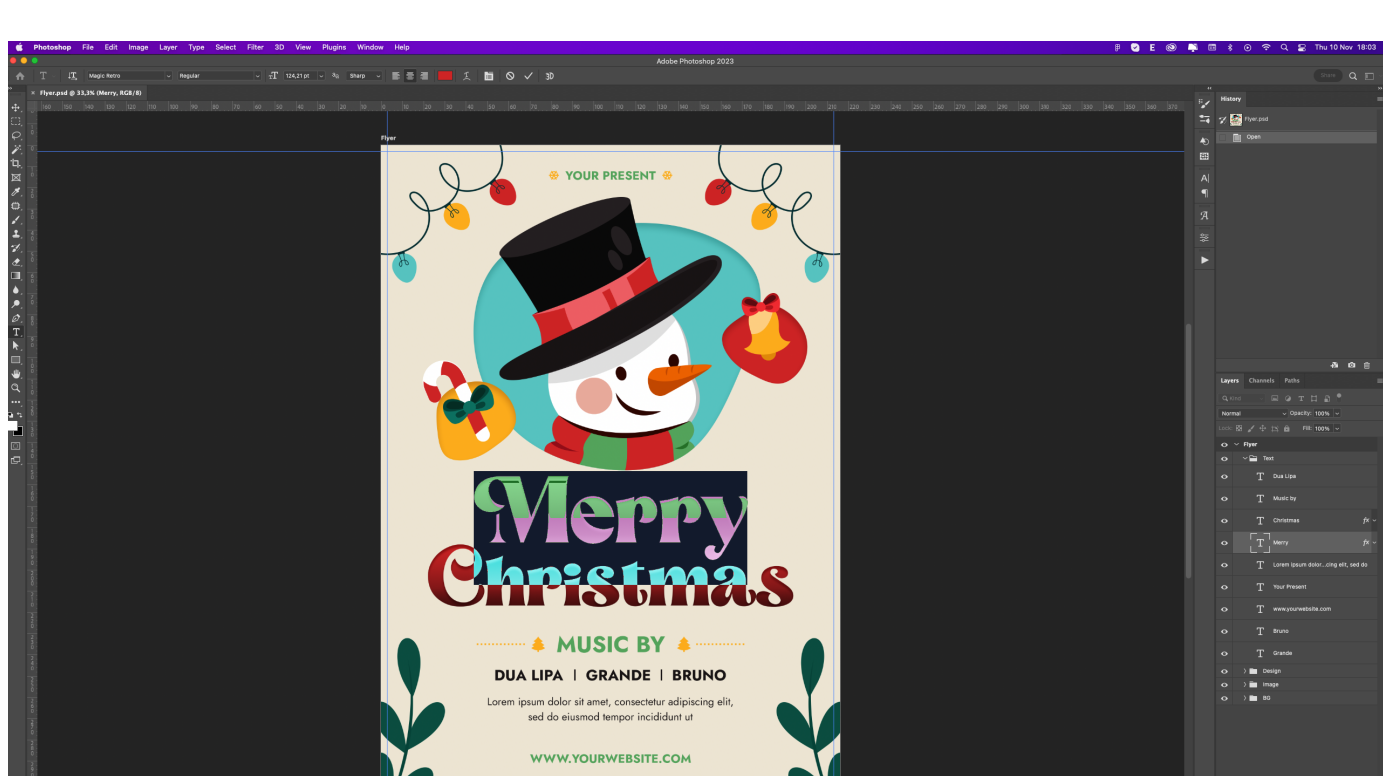
All images in this template are saved as 'smart objects'. This saves you from having to resize and scale your images to work within this template.

- To add an image, find the image layer in the templated named **"Place your image"** — Double click the small thumbnail (bottom right) of this layer. A new empty file will open
- Add your chosen image going to **File > Place Linked** and selecting your image
- Press Return/Enter on your keyboard to 'place' the image
- Make sure the placed image fills the whole artboard
- Once your happy, go to **File > Save**
- You can now close that file
- Your original file will be updated with the new image



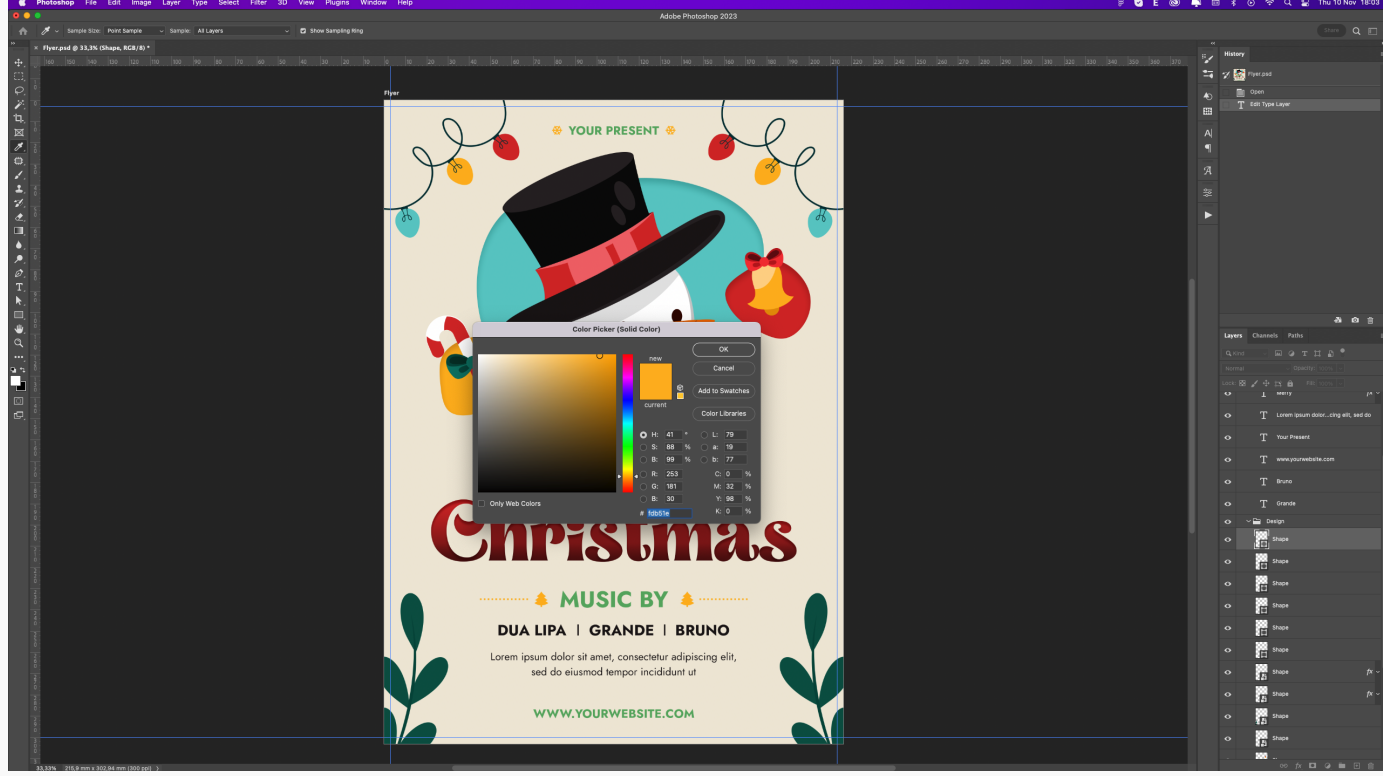
ADDING TEXT

- First, select the Type Tool (or shift t) in the tool panel (**Window > Tools**)
- Next, navigate to the text you wish to edit
- Double click the text and highlight the words you wish to edit
- Once finished, press the escape key



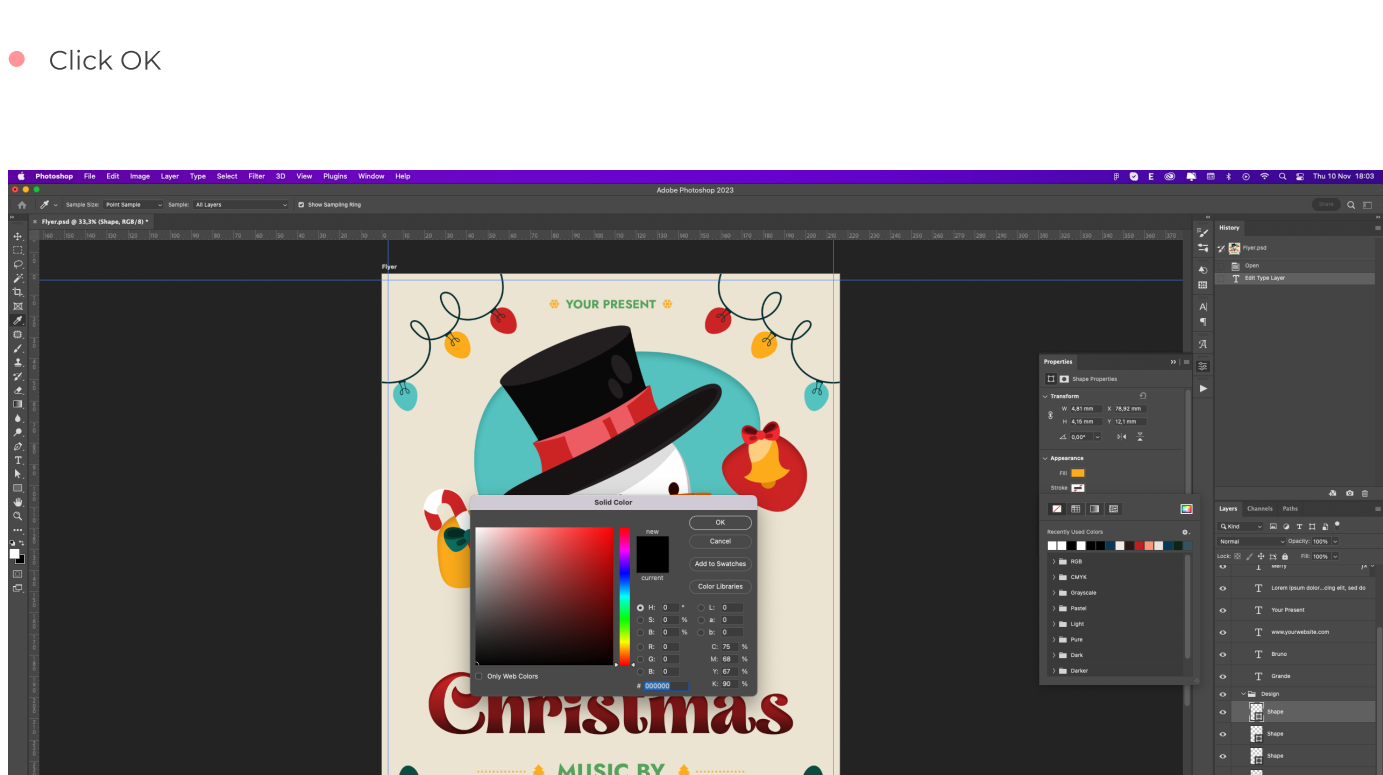
EDITING COLOUR

- Find the box in the layers panel and double click the small thumbnail (bottom right) next to the layer name
- This will open the color selector. Choose your color accordingly
- Click OK



EDITING STROKES

- Click on the the stroke layer in the layers panel
- Open the properties panel (**Windows > Properties**)
- Click the stroke box (circled red in the below diagram)
- Choose your color from dropdown color selector
- Click OK



THANKS FOR YOUR PURCHASE!

Feel free to contact us if you have any questions:

info@la-studioweb.com

