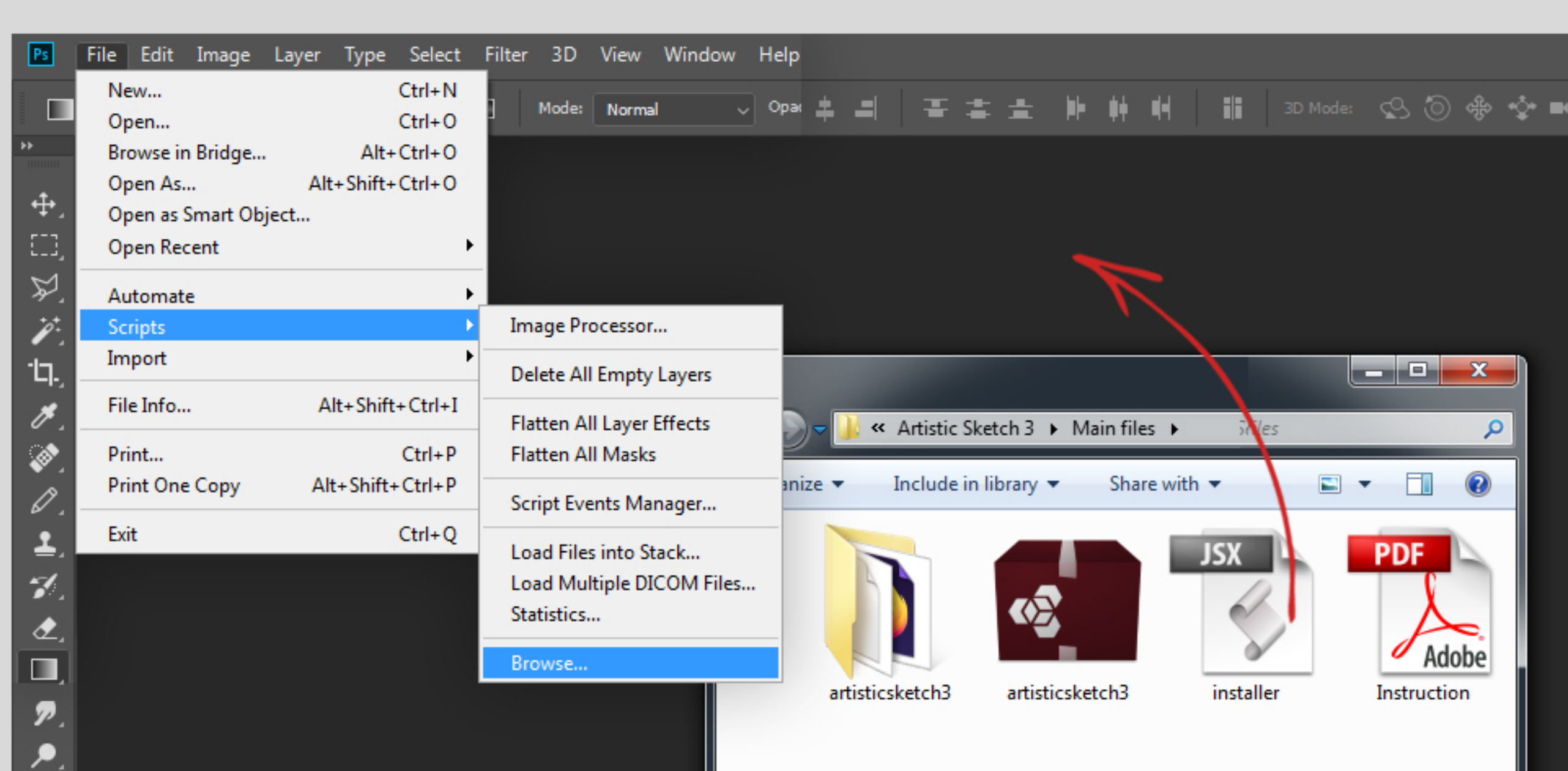
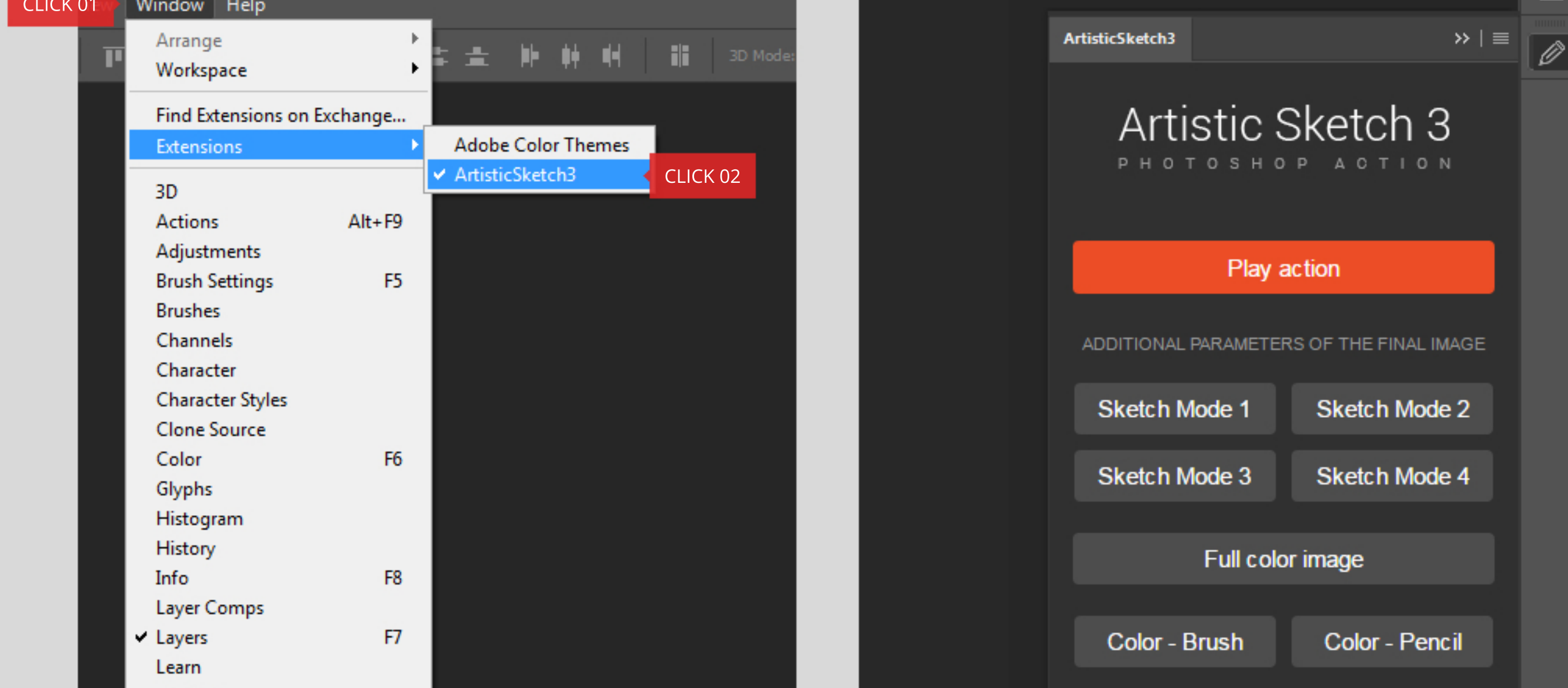


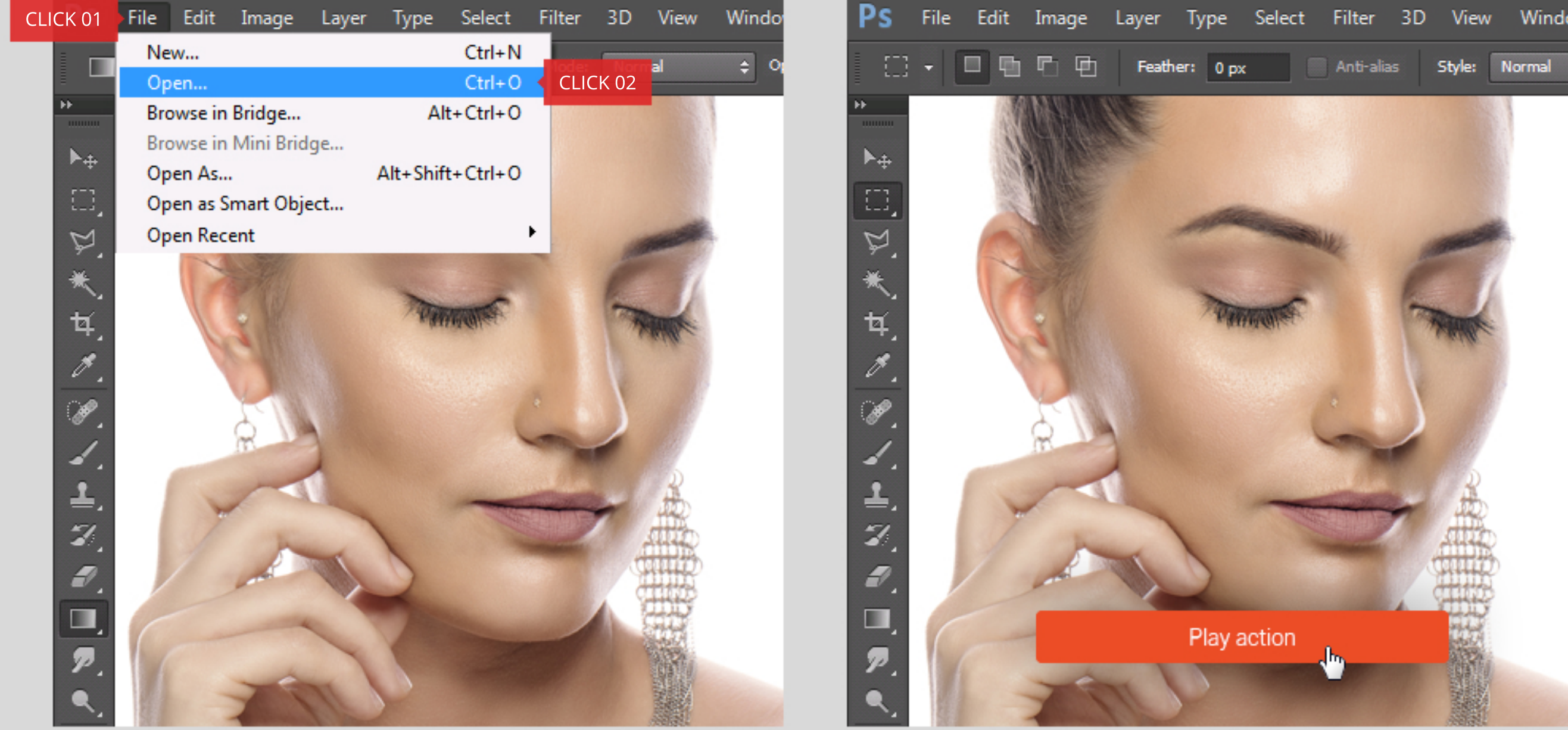
PREPARING FOR THE ACTION



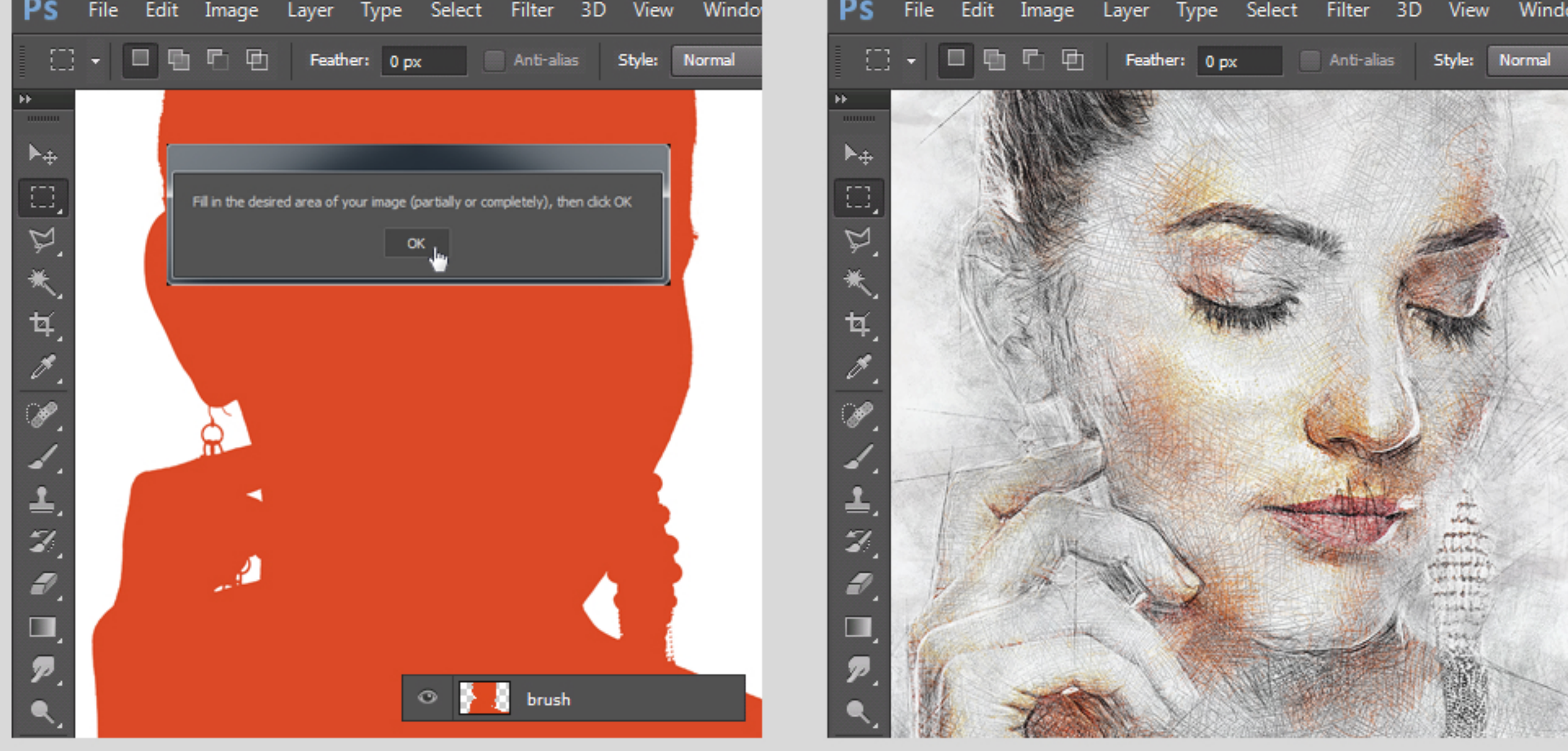
1. Drag the script file **"Installer"** into the program window or load it using the command: **"File - Scripts - Overview"**. Then restart the program.



2. After restarting the program, select the item: **"Window" - "Extensions" - "ArtisticSketch3"**. Then the main action panel will load.

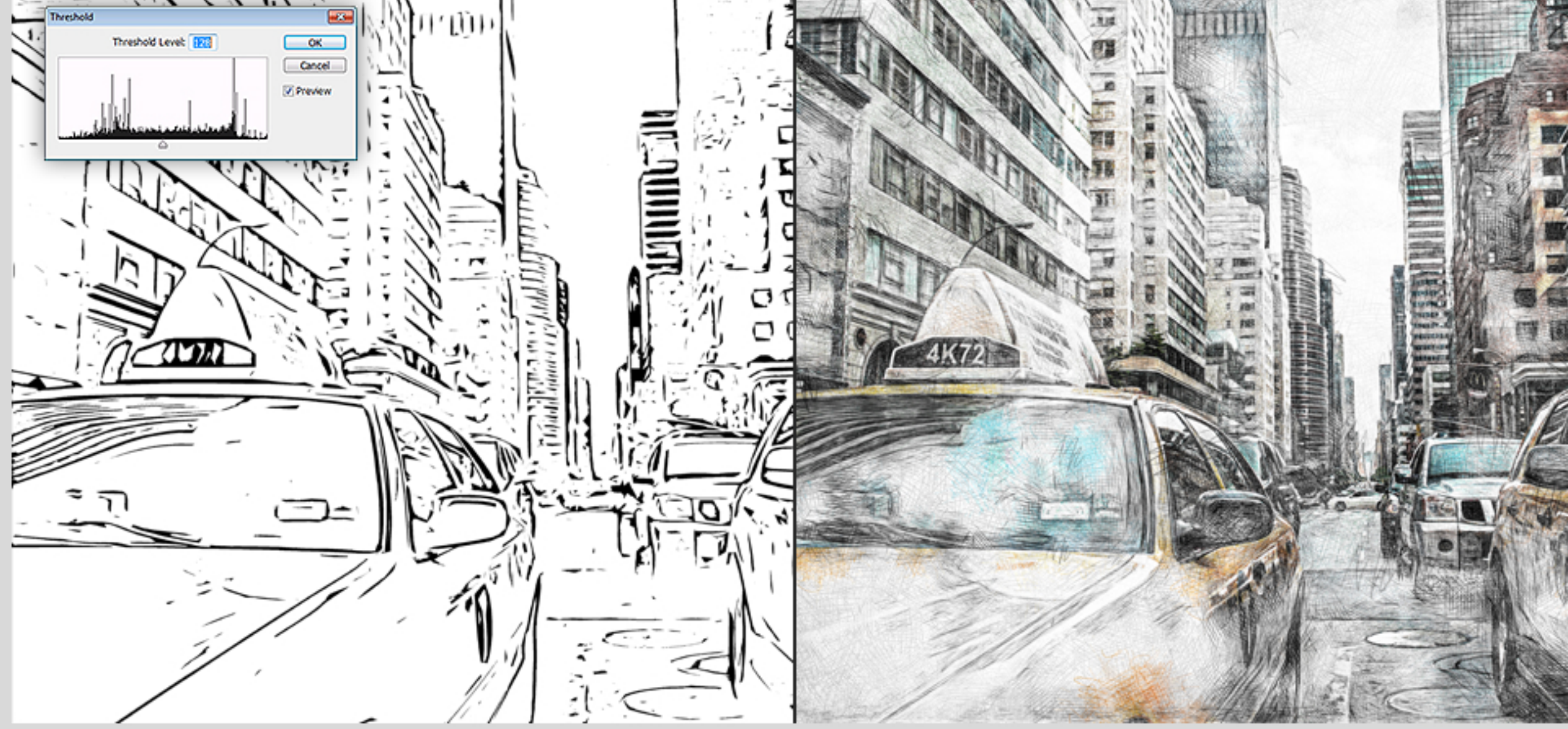


3. Open the file with the required photo (The recommended size of the object 3500 - 6000 px) and click **"Play action"** in the panel.

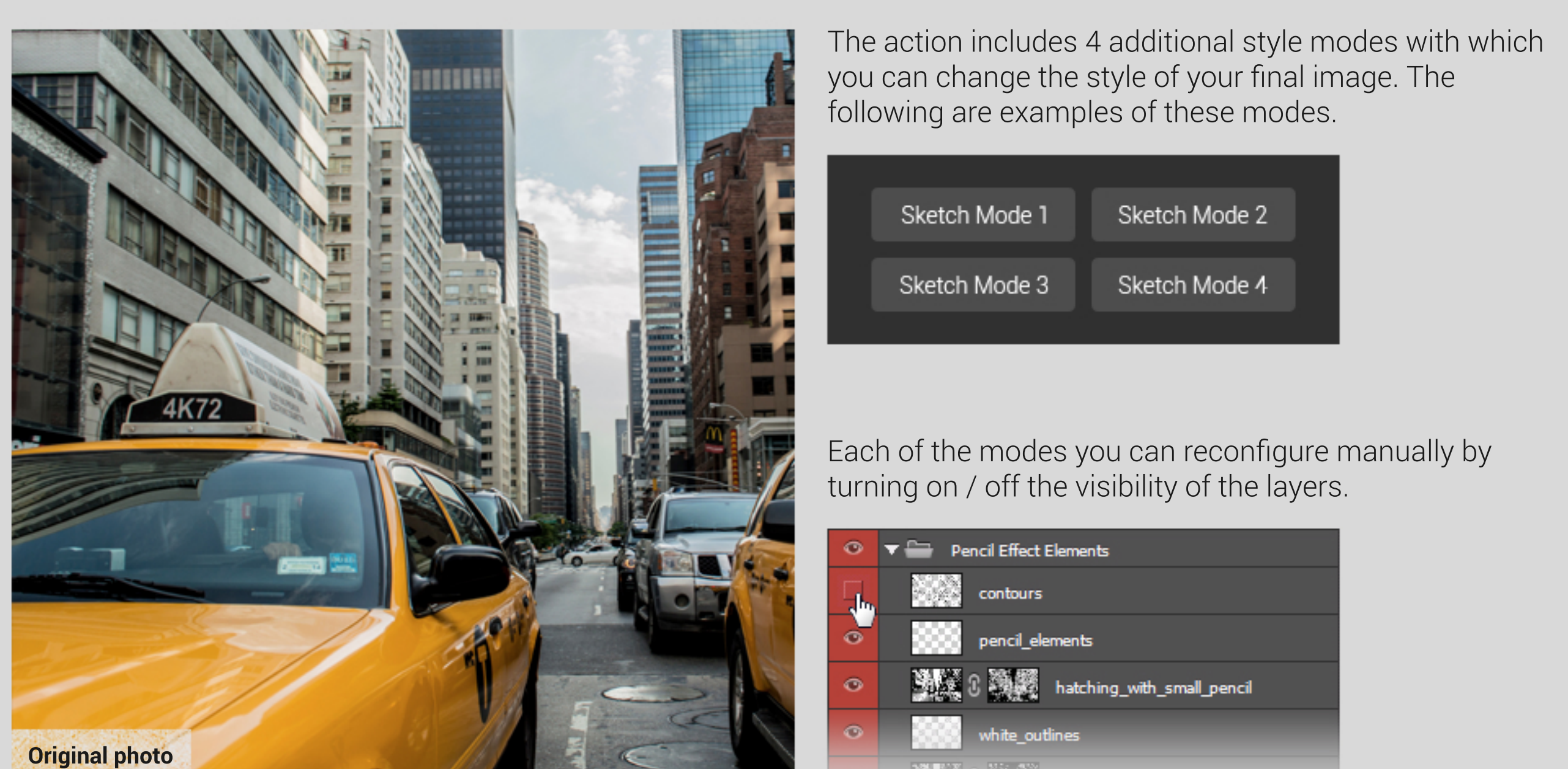


4. After that, fill in the necessary area of your image and click **"OK"** in the dialog box that appears.

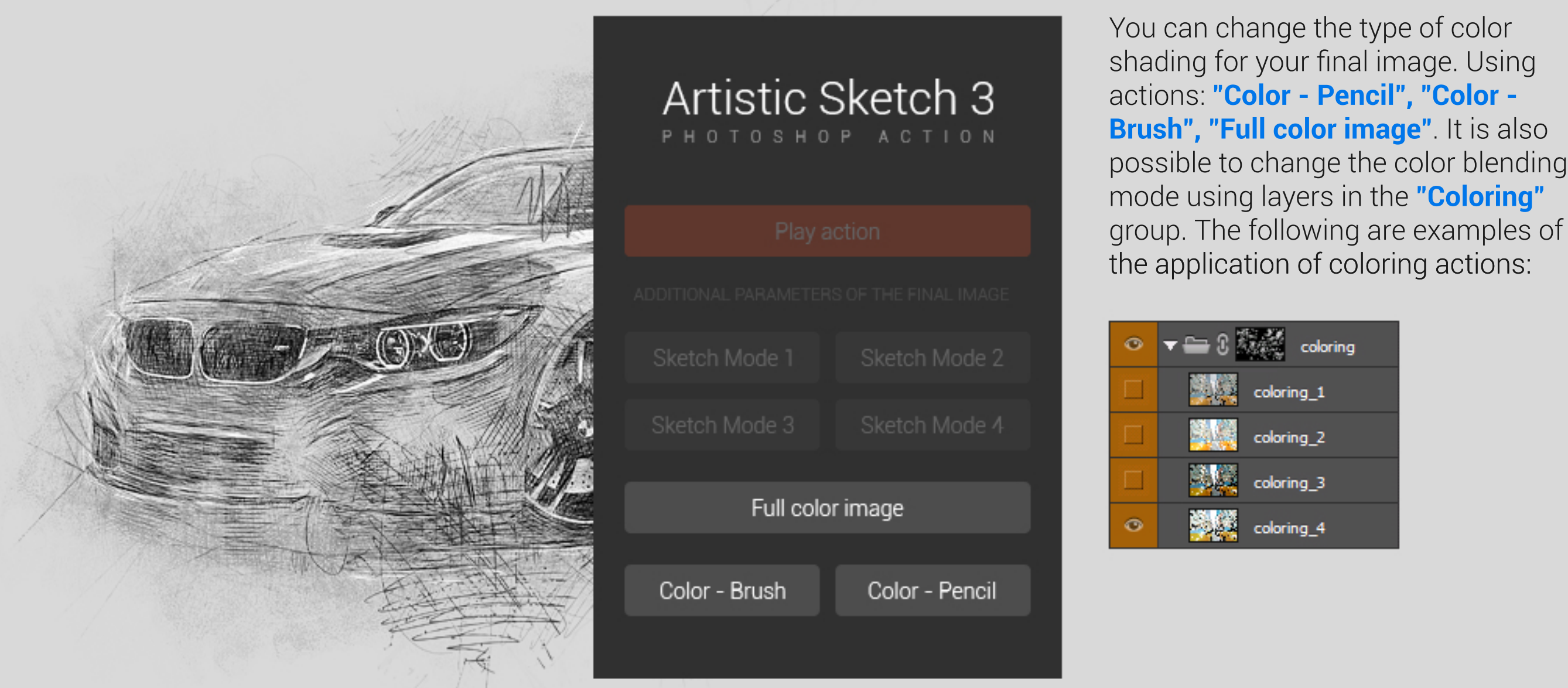
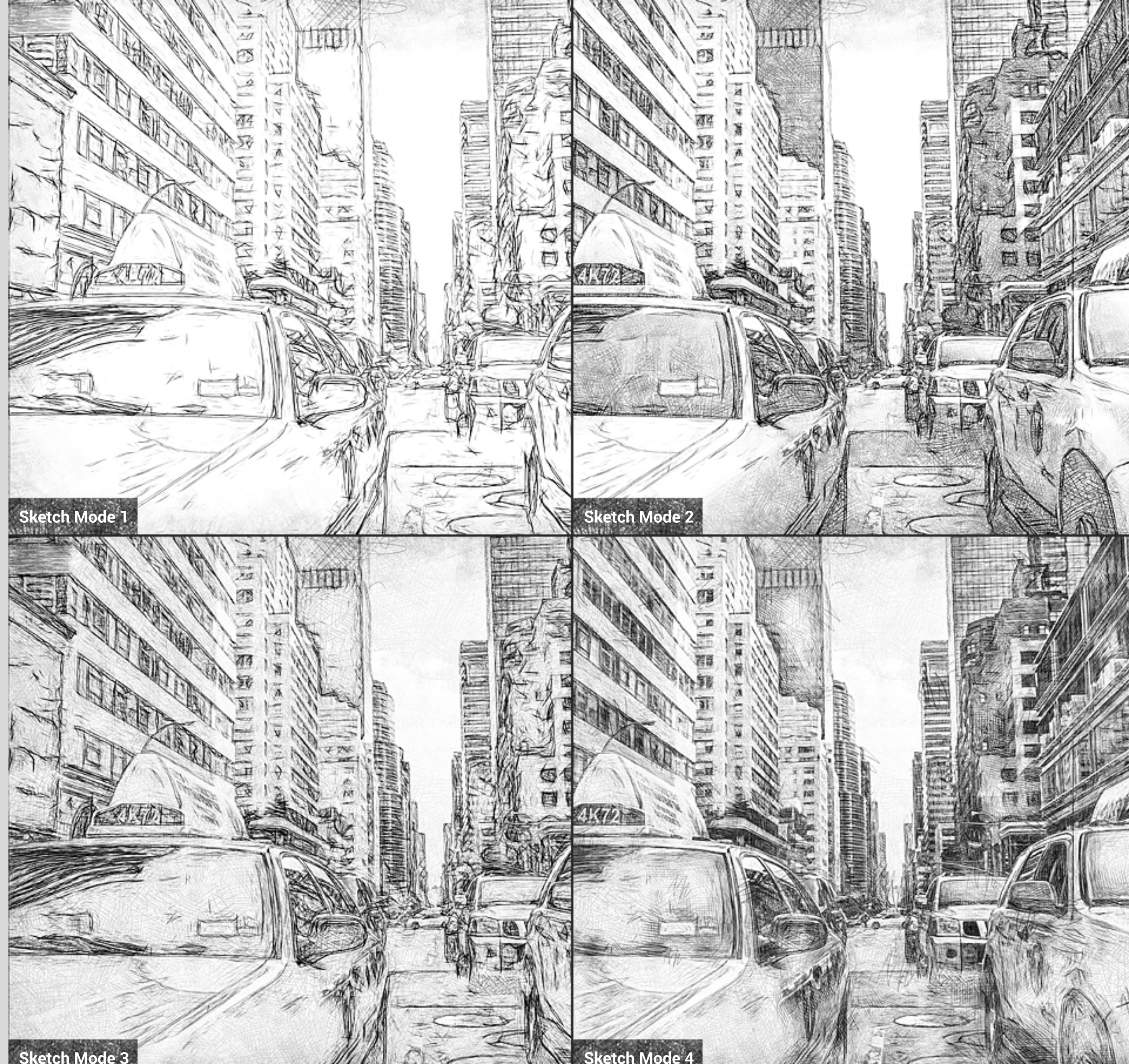
ADDITIONAL INFORMATION



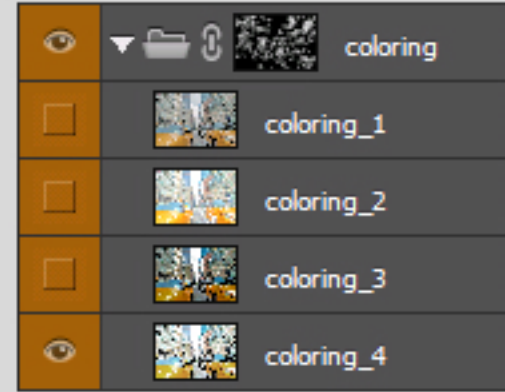
At the time of the operation, a window will open, in which you will need to manually adjust the desired contour visualization that you would like to see in the final image. After you adjust the desired shape of the outlines, click "ok" and wait for the operation to finish.



Each of the modes you can reconfigure manually by turning on / off the visibility of the layers.



You can change the type of color shading for your final image. Using actions: **"Color - Pencil"**, **"Color - Brush"**, **"Full color image"**. It is also possible to change the color blending mode using layers in the **"Coloring"** group. The following are examples of the application of coloring actions:



For more information, see the video on the author's channel.