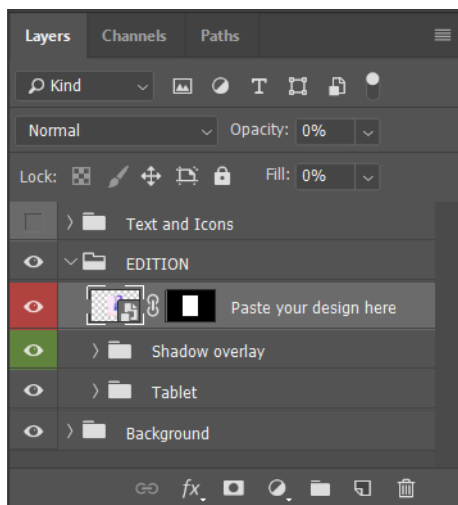


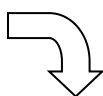
## Guide Instruction

### Step 1 :



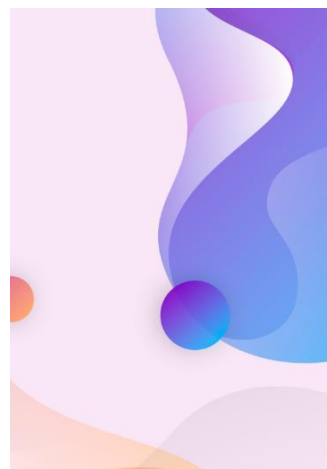
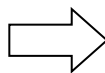
Open folder (**Paste your design...**) then double-click the layer to replace it with your images/template.

or "Smart Object thumbnail" (marked with **Red** color), it will open new editing tab in your document. Paste your design inside that tab, save then close the tab. Enjoy the result!

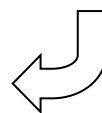
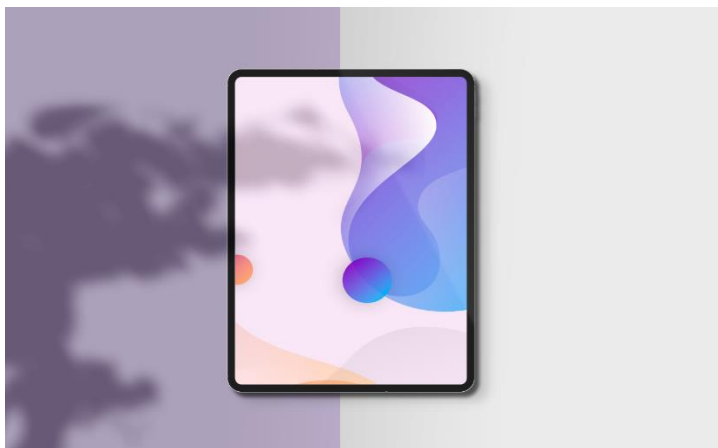


Example :

Blan | **BEFORE**

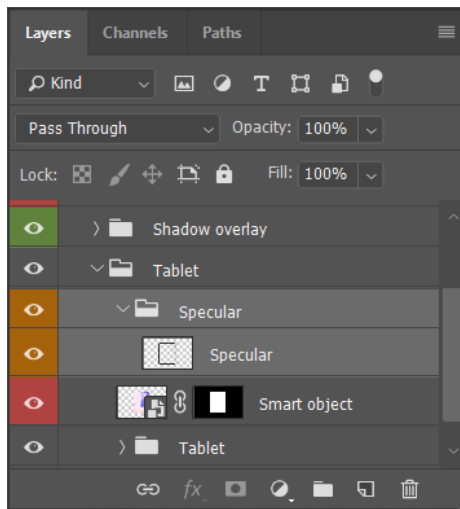


Your Design | **AFTER :**



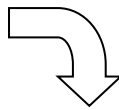
## Guide Instruction

### Step 2 :



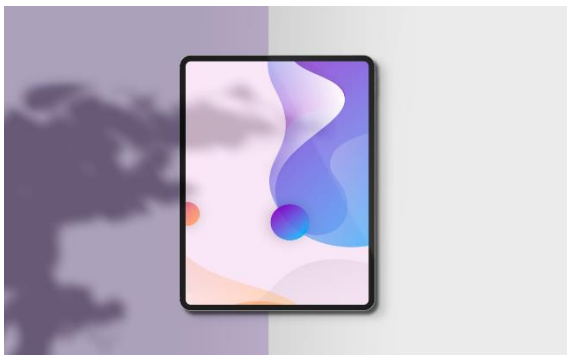
Open Object folder, you will find specular layer (**marked with Orange color**)..

You can left click the indicated layer for **On/Off** specular or you can adjust it by yourself



Example : **ON / OFF “Specular”**

Specular | **ON** :



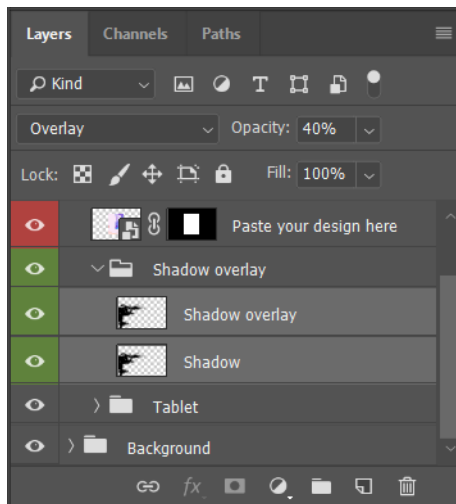
Specular | **OFF** :



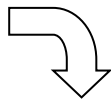
\*Also, you can increase/decrease the specular effect, use “Opacity” and make your own.

## Guide Instruction

### STEP 3 :



Open object folder then you will find shadow overlay layer.. (**marked with Green color**), it will allow you to easily adjust the opacity



**-On**



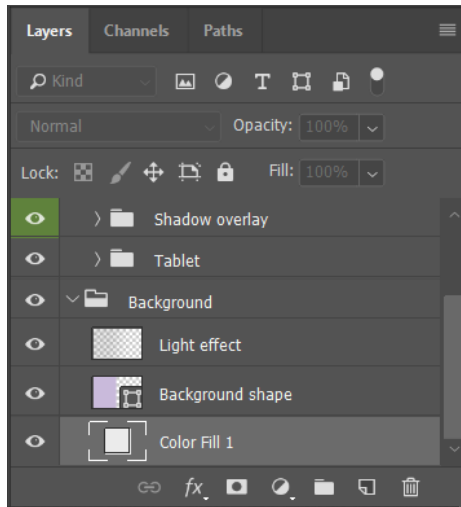
**-Off**



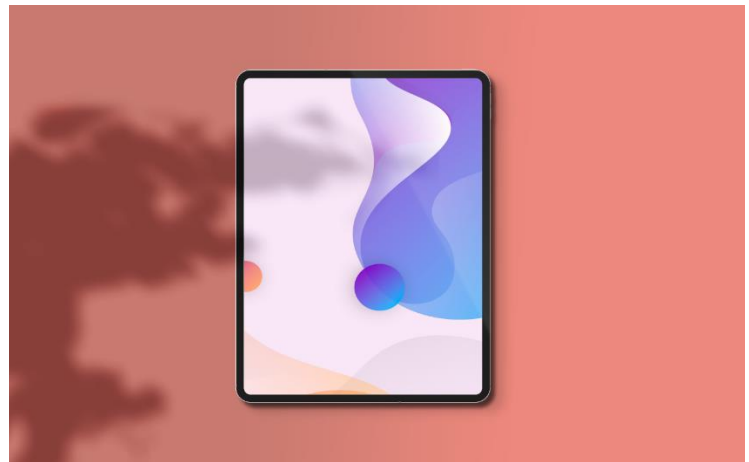
**Tips :** Open Shadow Folder, edit Ao/shadow "Opacity" until 100% or like you want.

## Guide Instruction

### STEP 4 :



“Color” Folder : **Background**, double click “Layer thumbnail” on “**Color Fill**” to use any color like you need. Then, dissable / click “Indicates layer visibility” on layer **Your background**.



Thank you for downloading this mockup, I hope you enjoy and please rate this item with 5 stars :

# GraphicMonday