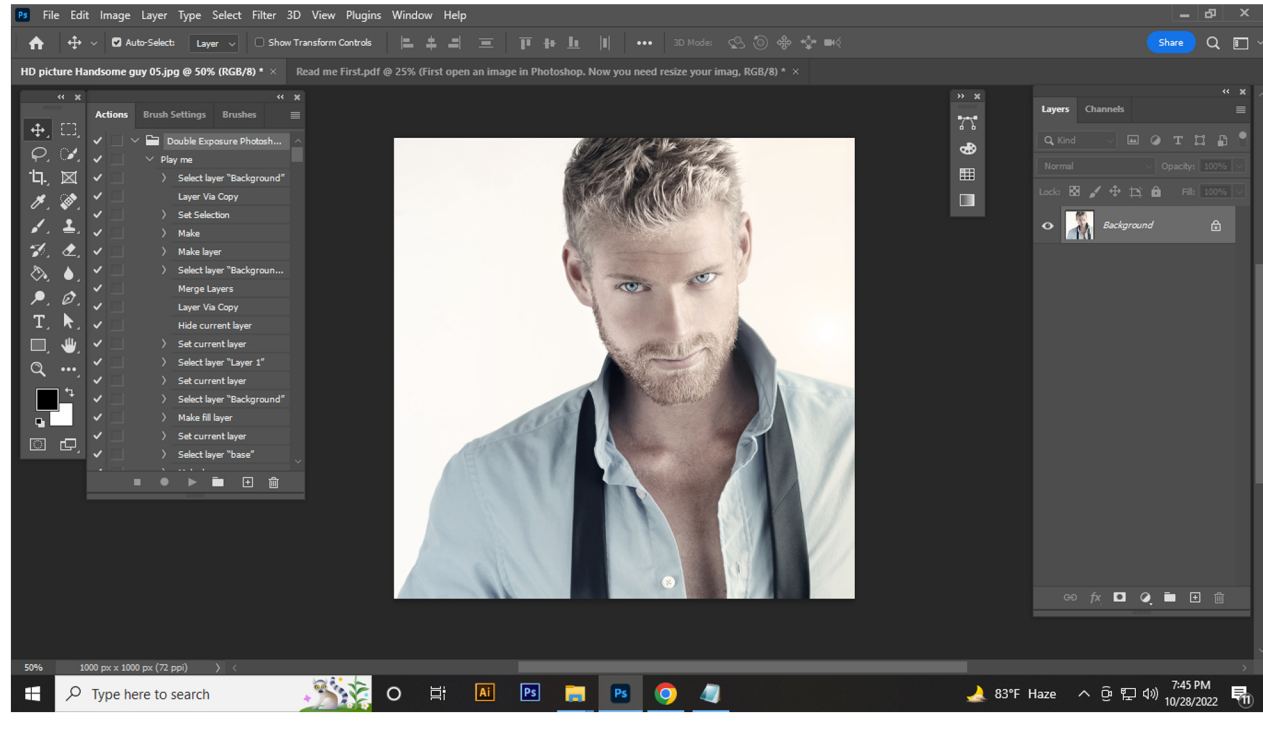
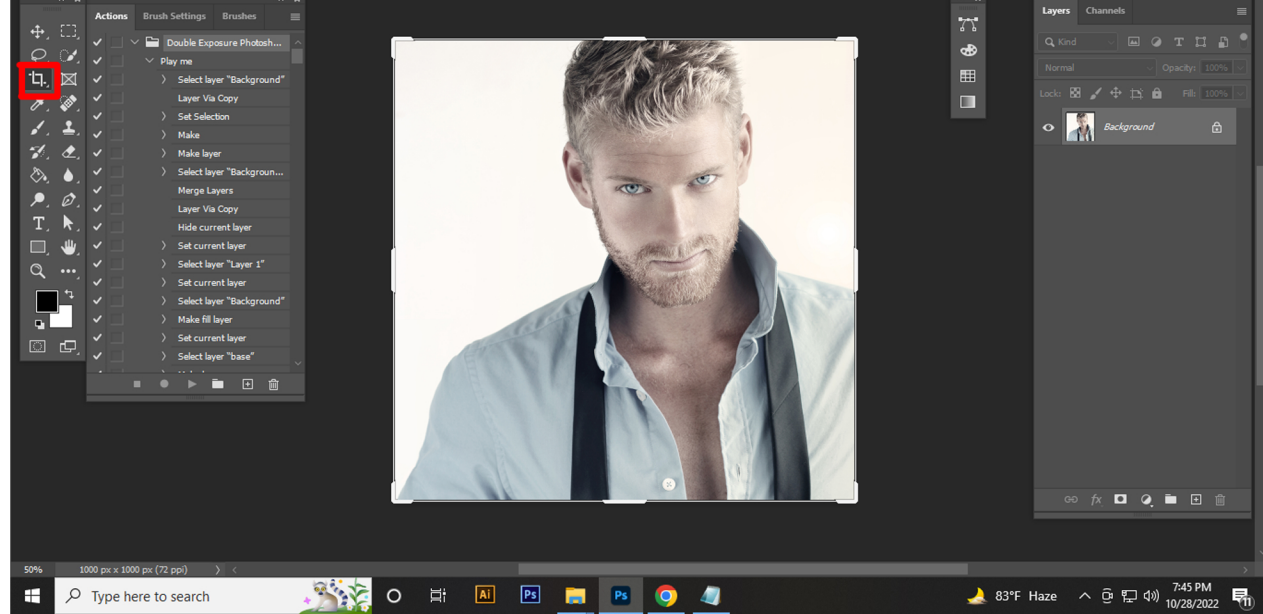


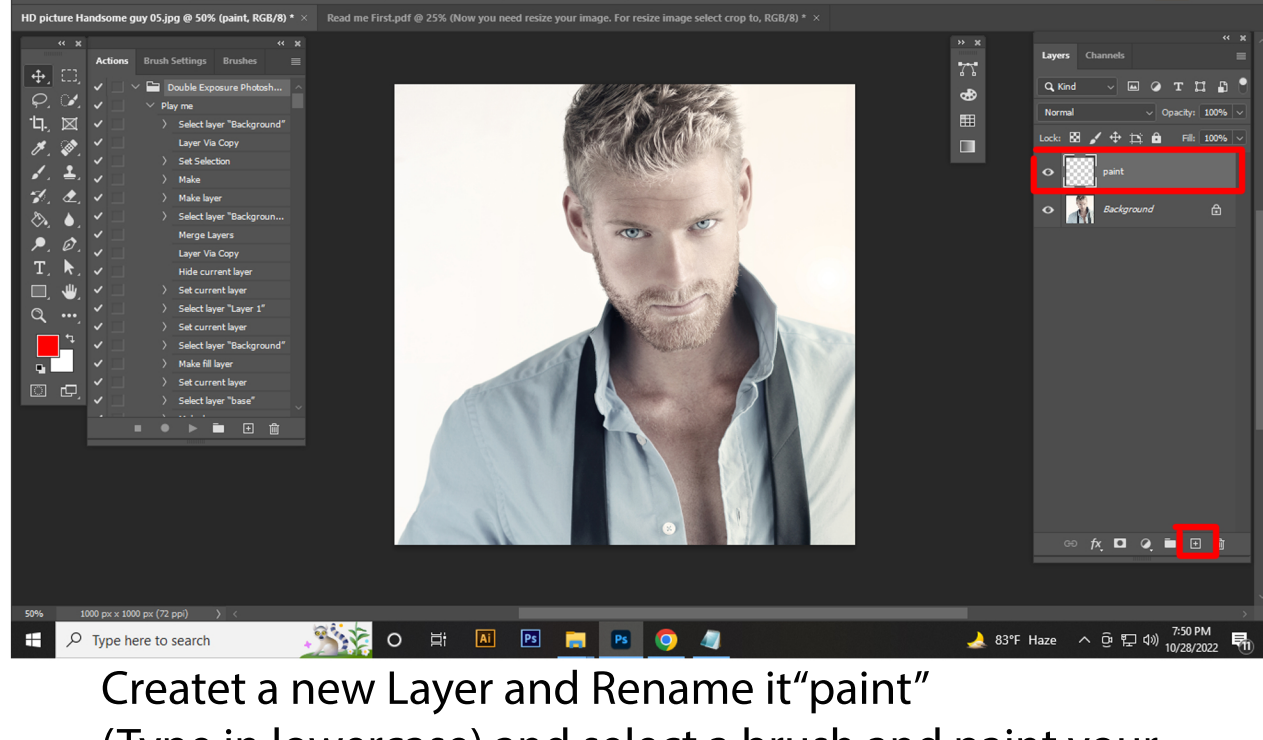
# How To Work Action



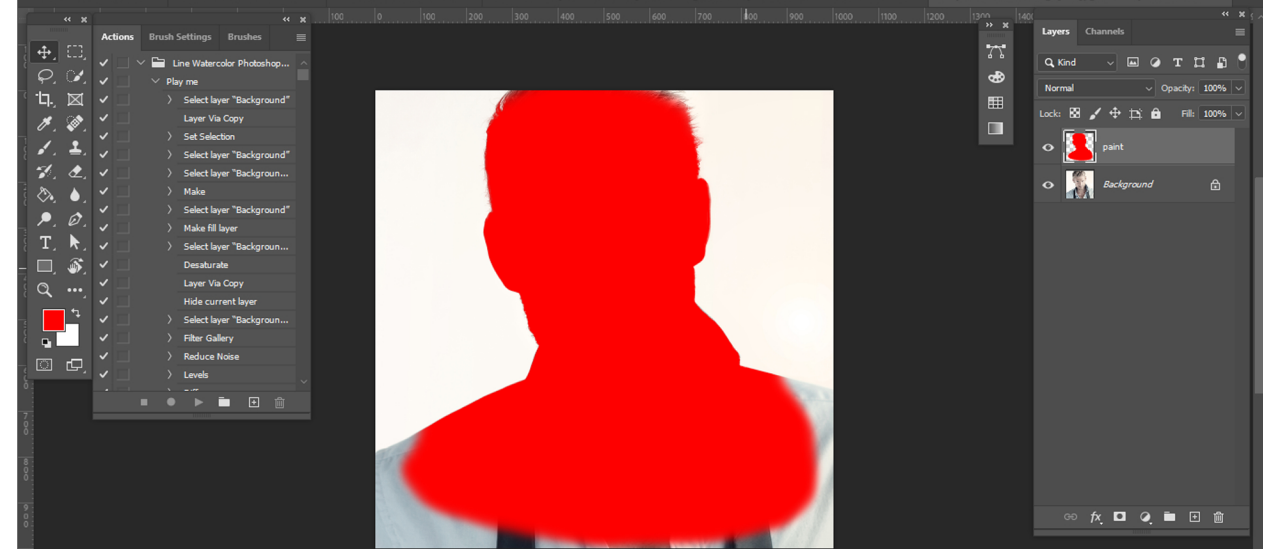
## Open Photo in Photoshop



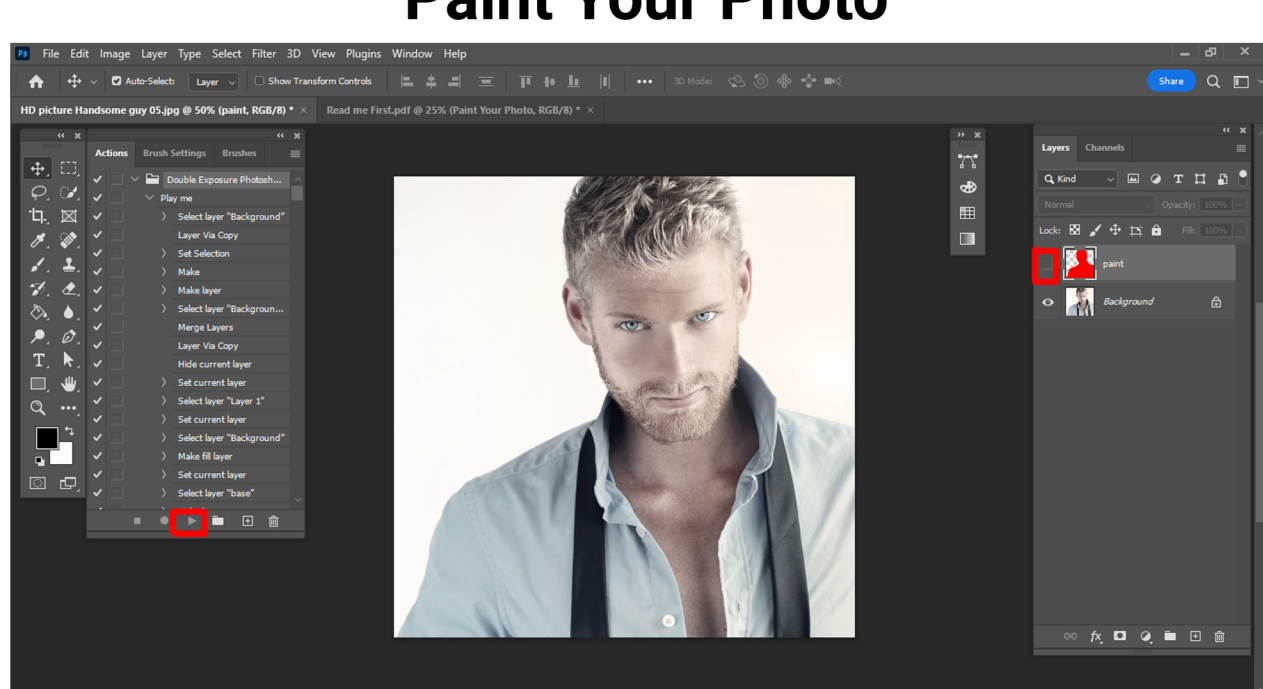
Now you need resize your image. For resize image select crop tools and go top menu bar you see W x H x Reso three blank box. Write W 1000px,H 1000px,Resolution 72. Then press enter button.



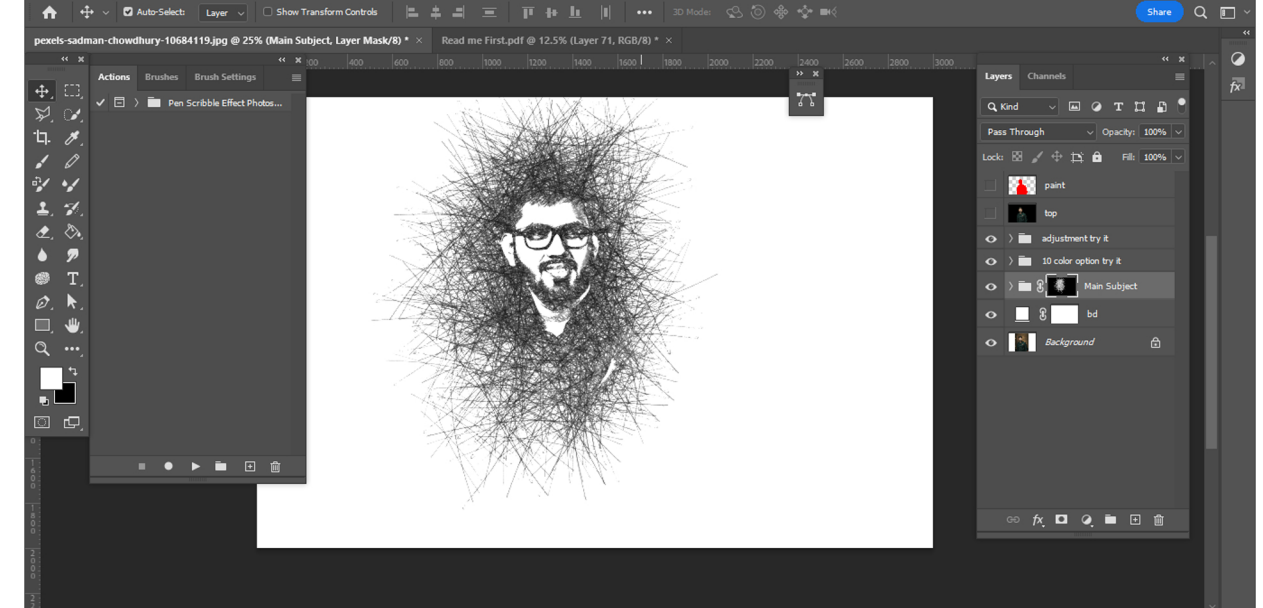
Createt a new Layer and Rename it“paint” (Type in lowercase) and select a brush and paint your image and close “paint” layer eye. Keep Selection “Background” layer and click action play button.



## Paint Your Photo



Close “paint” layer eye & keep Selection “Background” layer then click action play button. The action is run...



## Here is the final result

### HOW TO LOAD BRUSH/PATTERN?

If you are using Photoshop CS6 or lower version. Then follow the guidelines well below  
open photoshop > Edit > Presets > Presets Manager > Brush/Pat-tern > Load > Brush/Pattern File > Done

If you are using Photoshop CC or latest version please follow the guideline:

Load brush/pattern "Brushes/Pa-terns (Load me 1st)" file, simply double click brush/pattern file, it's loaded your Photoshop