

HOW TO IMPORT PRESETS INTO LIGHTROOM?



3MOTIONAL



TITLES

1. Download the preset files
2. Open Lightroom
3. Go to the Develop module
4. Open the Presets panel
5. Import the presets
6. Select the preset files
7. Click "Import"
8. Apply the presets





DOWNLOAD THE PRESET FILES

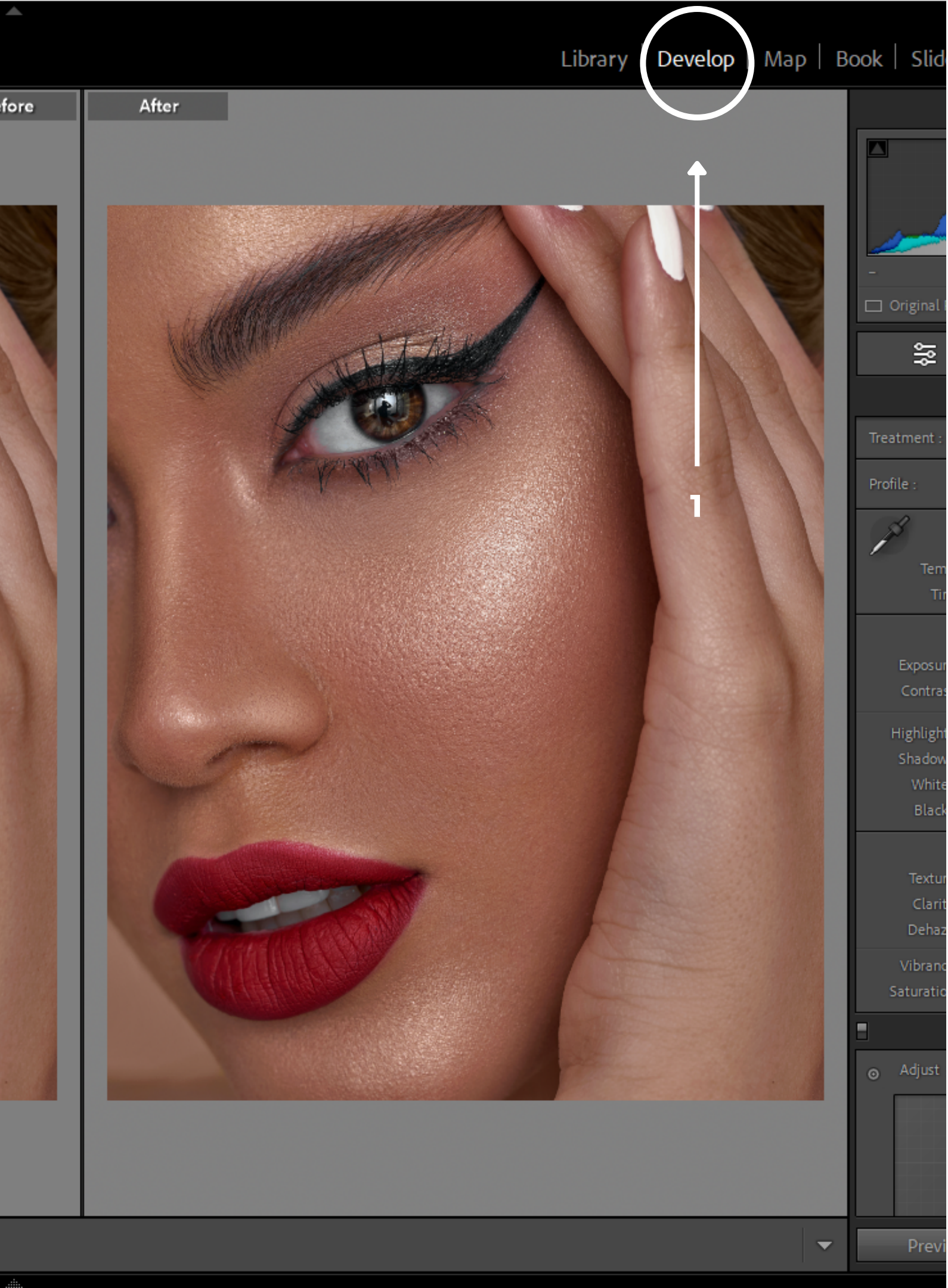
**OUR PRESETS ARE AVAILABLE FOR
DOWNLOAD ON OUR WEBSITE AND
IN ONLINE MARKETPLACES. AFTER
DOWNLOADING THE PRESET FILES, IT
IS RECOMMENDED TO SAVE THEM IN
A LOCATION ON YOUR COMPUTER
THAT IS EASILY ACCESSIBLE.**

3MOTIONAL



OPEN LIGHTROOM

**LAUNCH LIGHTROOM ON YOUR
COMPUTER, AND MAKE SURE THAT
IT'S UP TO DATE. YOU CAN CHECK
FOR UPDATES BY GOING TO THE HELP
MENU AND SELECTING "UPDATES."**

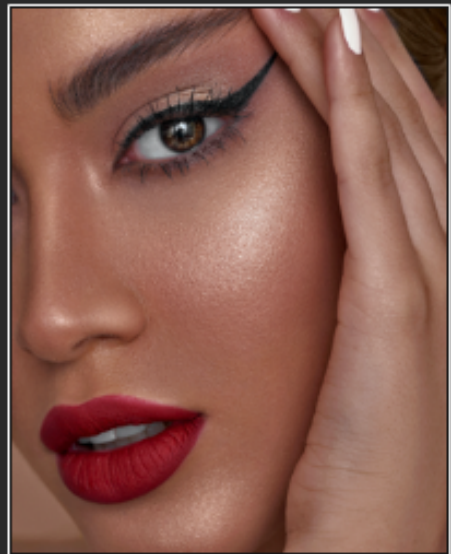


GO TO THE DEVELOP MODULE

CLICK ON THE DEVELOP MODULE IN THE TOP RIGHT-HAND CORNER OF THE SCREEN. THIS IS WHERE YOU WILL BE ABLE TO APPLY THE PRESETS TO YOUR PHOTOS.

3MOTIONAL

▼ Navigator FIT 100% 300%

Preset: None
Amount 100

▼ Presets +

- ▶ Adaptive: Portrait
- ▶ Adaptive: Sky
- ▶ Adaptive: Subject
- ▶ Portraits: Deep Skin
- ▶ Portraits: Medium Skin
- ▶ Portraits: Light Skin
- ▶ Portraits: Black & White
- ▶ Portraits: Edgy
- ▶ Portraits: Group
- ▶ Auto+: Retro
- ▶ Seasons: Spring
- ▶ Seasons: Summer
- ▶ Seasons: Autumn
- ▶ Seasons: Winter
- ▶ Style: Black & White
- ▶ Style: Cinematic
- ▶ Style: Cinematic II
- ▶ Style: Futuristic
- ▶ Style: Vintage
- ▶ Subject: Concerts
- ▶ Subject: Food
- ▶ Subject: Landscape
- ▶ Subject: Lifestyle
- ▶ Subject: Travel
- ▶ Subject: Travel II

Copy...

Paste



RA

YY

Before & After:

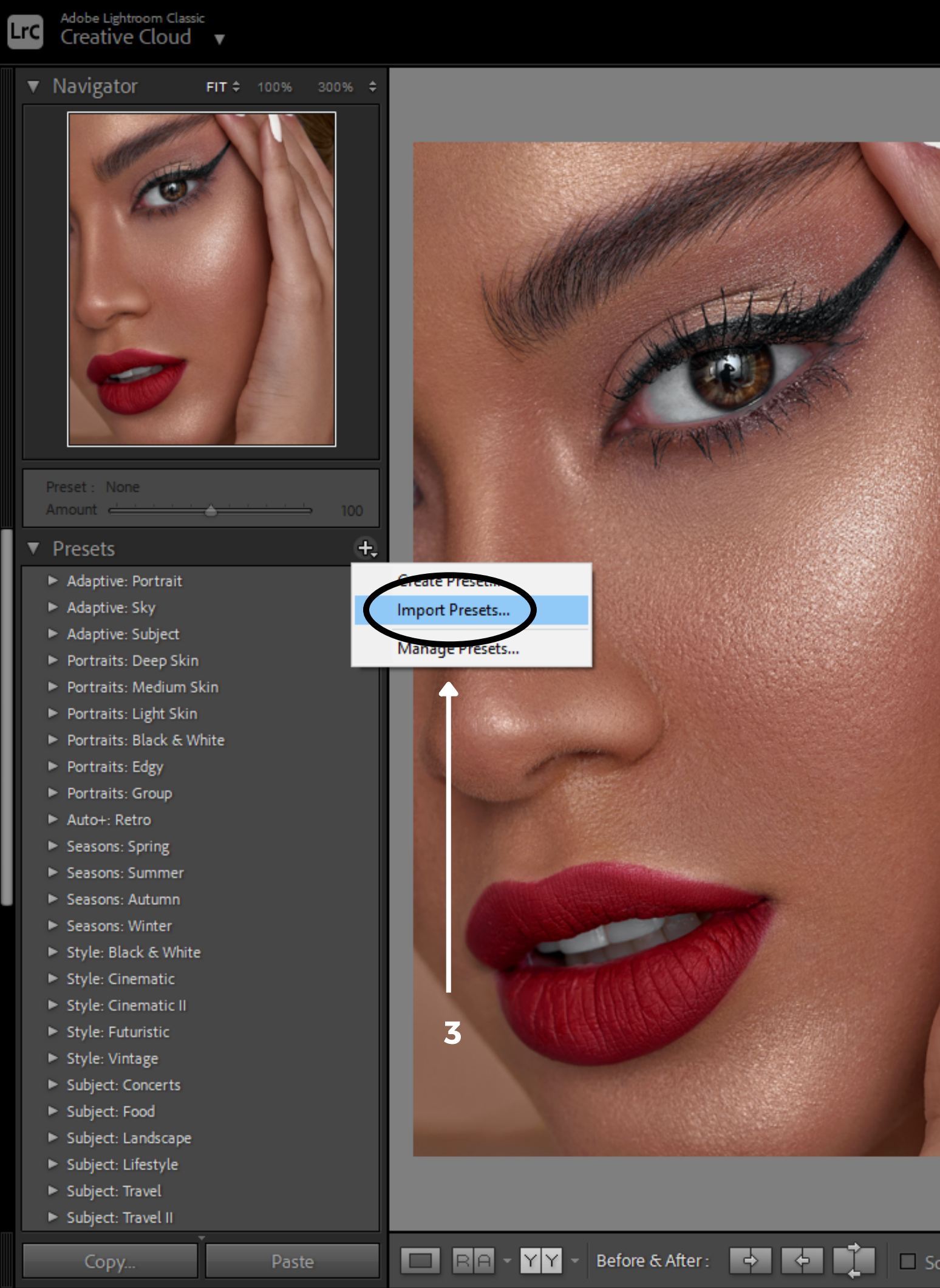


So

OPEN THE PRESETS PANEL

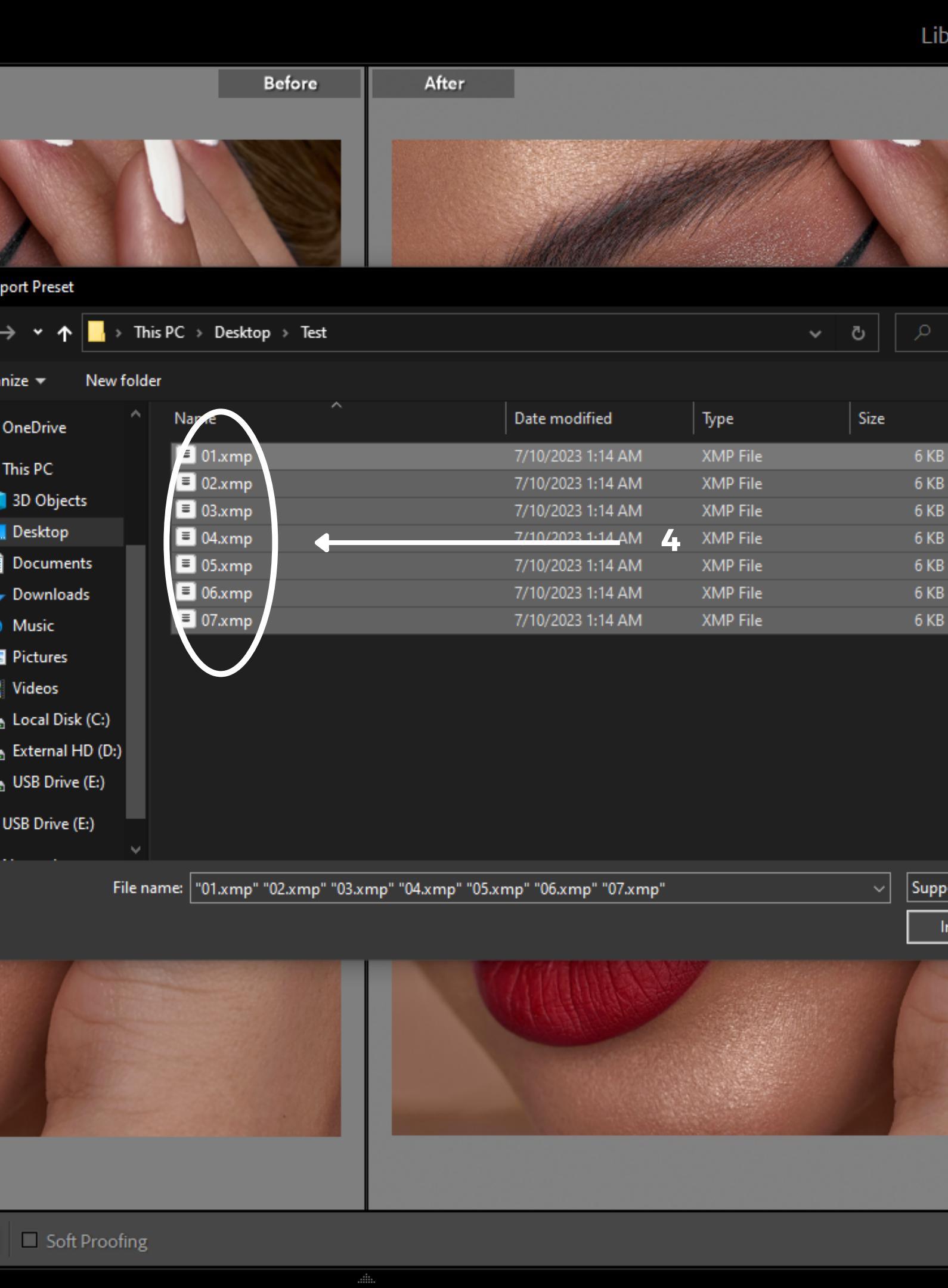
IN THE LEFT-HAND PANEL, YOU WILL
SEE A LIST OF PRESETS. IF YOU DON'T
SEE IT, CLICK ON THE "+" ICON TO THE
RIGHT OF THE PANEL NAME AND
SELECT "PRESET" FROM THE
DROPDOWN MENU.

3MOTIONAL



IMPORT THE PRESETS

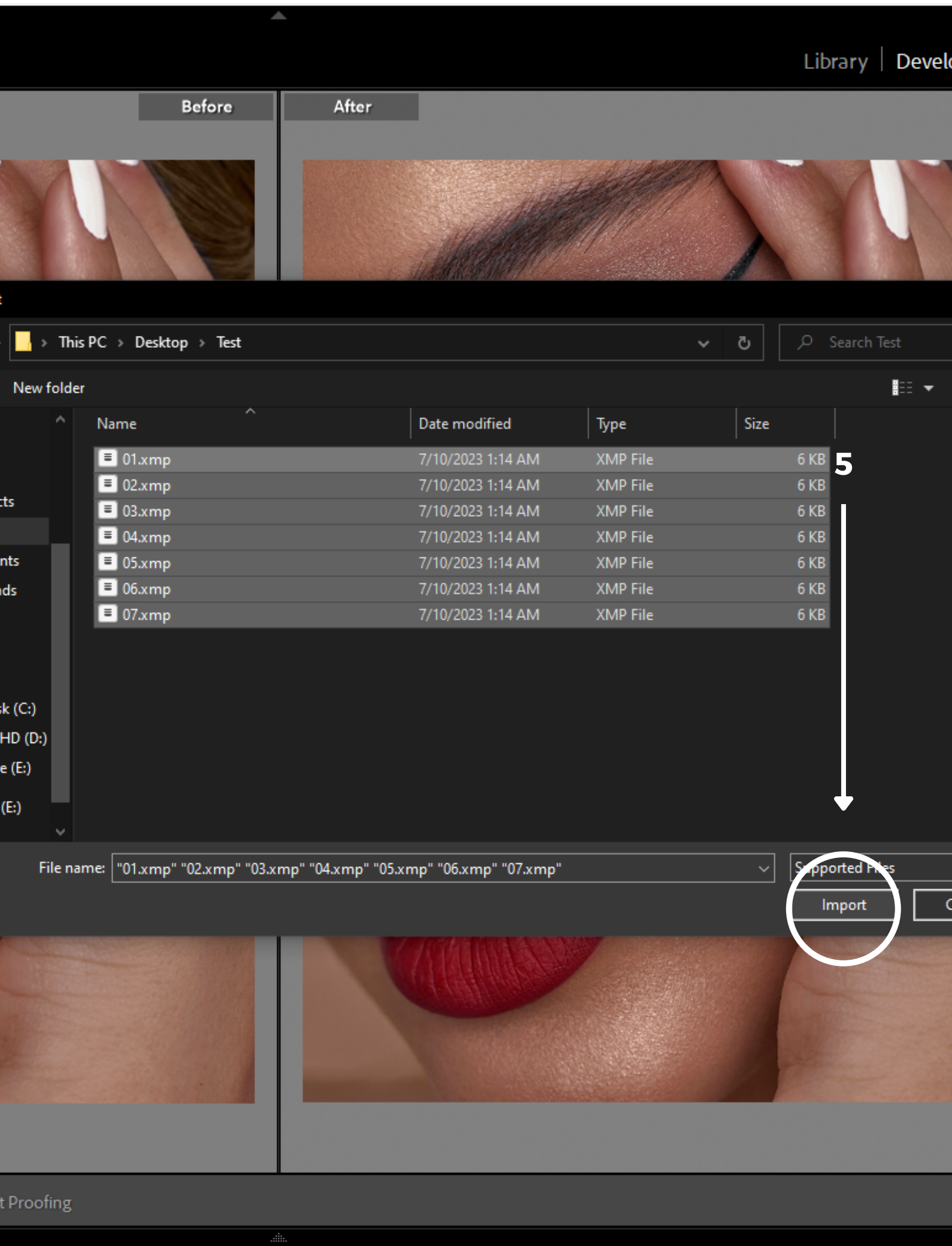
ONCE YOU HAVE OPENED THE PRESETS PANEL, CLICK ON THE "+" ICON AT THE TOP OF THE PANEL AND SELECT "IMPORT PRESETS" FROM THE DROPDOWN MENU. THIS WILL OPEN A FILE BROWSER WINDOW.



SELECT THE PRESET FILES

NAVIGATE TO THE LOCATION WHERE YOU SAVED THE PRESET FILES, AND SELECT THE FILES YOU WANT TO IMPORT. YOU CAN SELECT MULTIPLE PRESET FILES AT ONCE IF YOU WANT TO IMPORT SEVERAL PRESETS.

3MOTIONAL



CLICK "IMPORT"

ONCE YOU HAVE SELECTED THE PRESET FILES YOU WANT TO IMPORT, CLICK THE "IMPORT" BUTTON. LIGHTROOM WILL IMPORT THE PRESETS, AND YOU SHOULD SEE THEM APPEAR IN THE PRESETS PANEL.

3MOTIONAL



APPLY THE PRESETS

3MOTIONAL

TO APPLY A PRESET TO A PHOTO, SIMPLY SELECT THE PHOTO IN THE LIBRARY MODULE AND THEN CLICK ON THE PRESET IN THE PRESETS PANEL. LIGHTROOM WILL APPLY THE PRESET TO THE PHOTO, AND YOU CAN THEN ADJUST THE SETTINGS AS NEEDED.

SHARE YOUR EXPERIENCE

Sharing your experience and seeing glowing reviews from existing customers mean a lot to me and help to continue providing high-quality products. Thank you in advance for your review and for being a preferred customer.

THANK YOU

3MOTIONAL



Thanks!