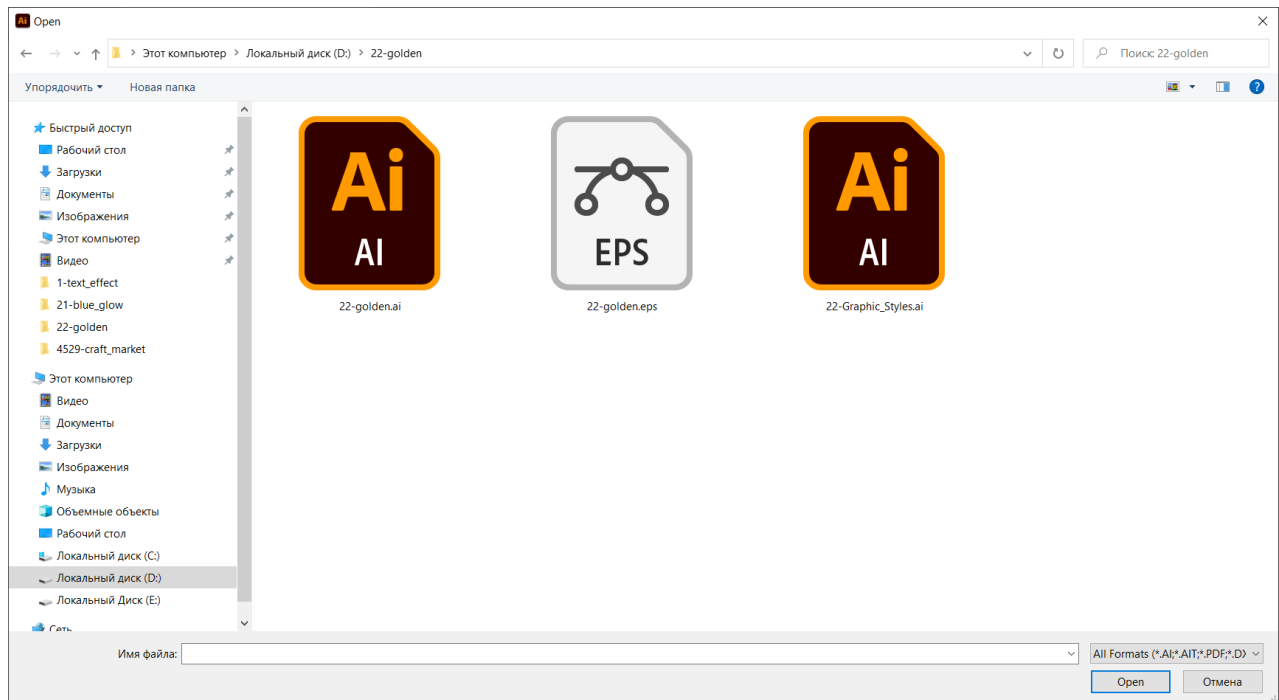


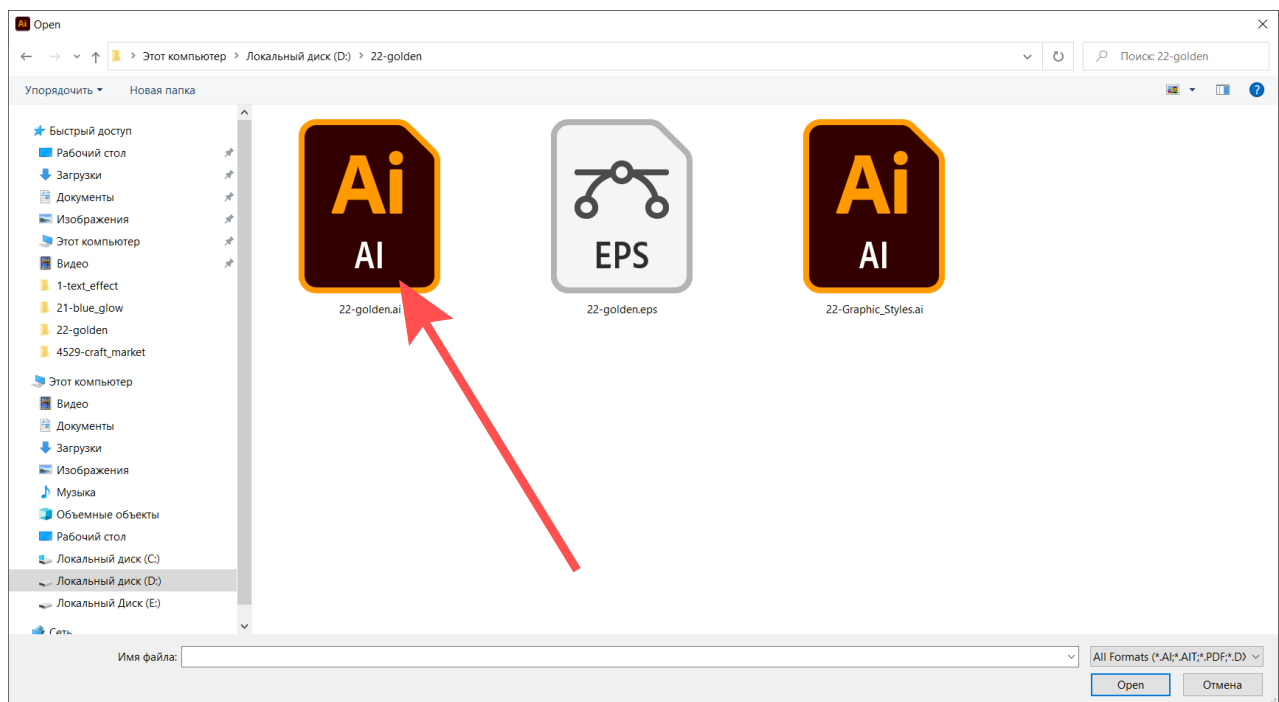
HOW TO USE VECTOR TEXT EFFECT

*Let's
print!*

1. Every ZIP archive contains these files: AI, EPS and a file to add to the "Graphic Styles" panel.



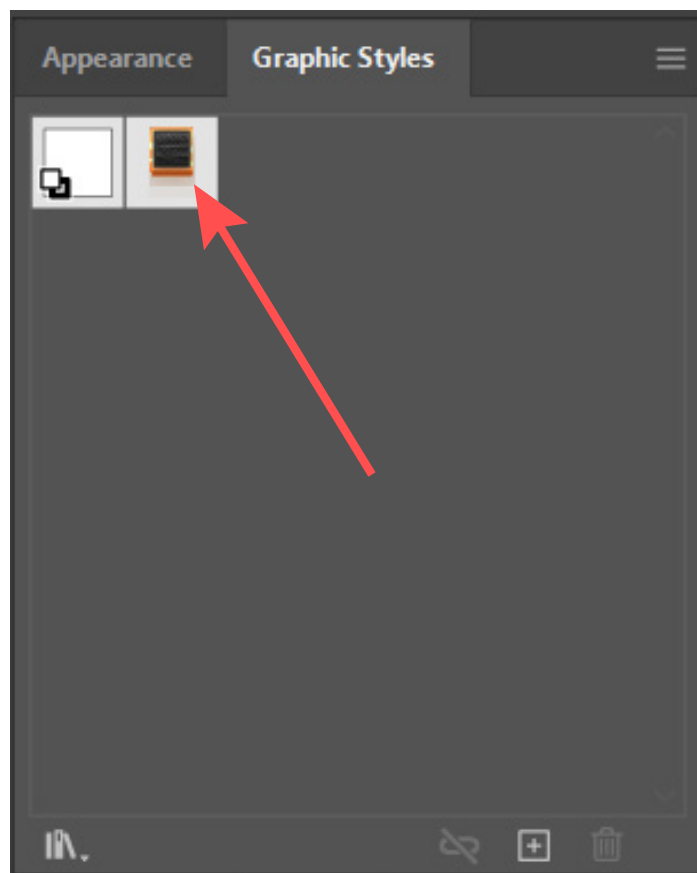
2. Open the file with the .AI extension



3. This is our vector text effect. You may have purchased other effect. The principle of working with a text effect is the same for all products.



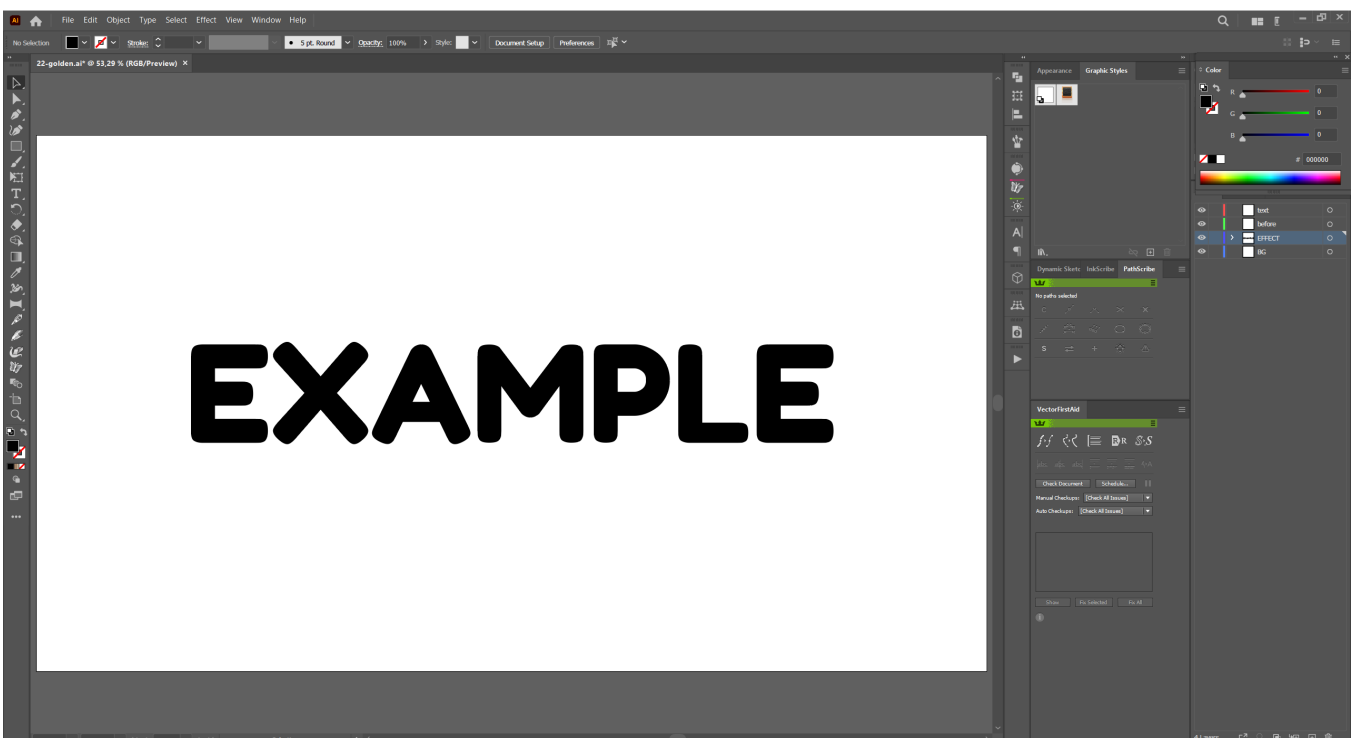
4. Notice that in the .AI and .EPS file the effect have been added to the "Graphic Styles" panel.



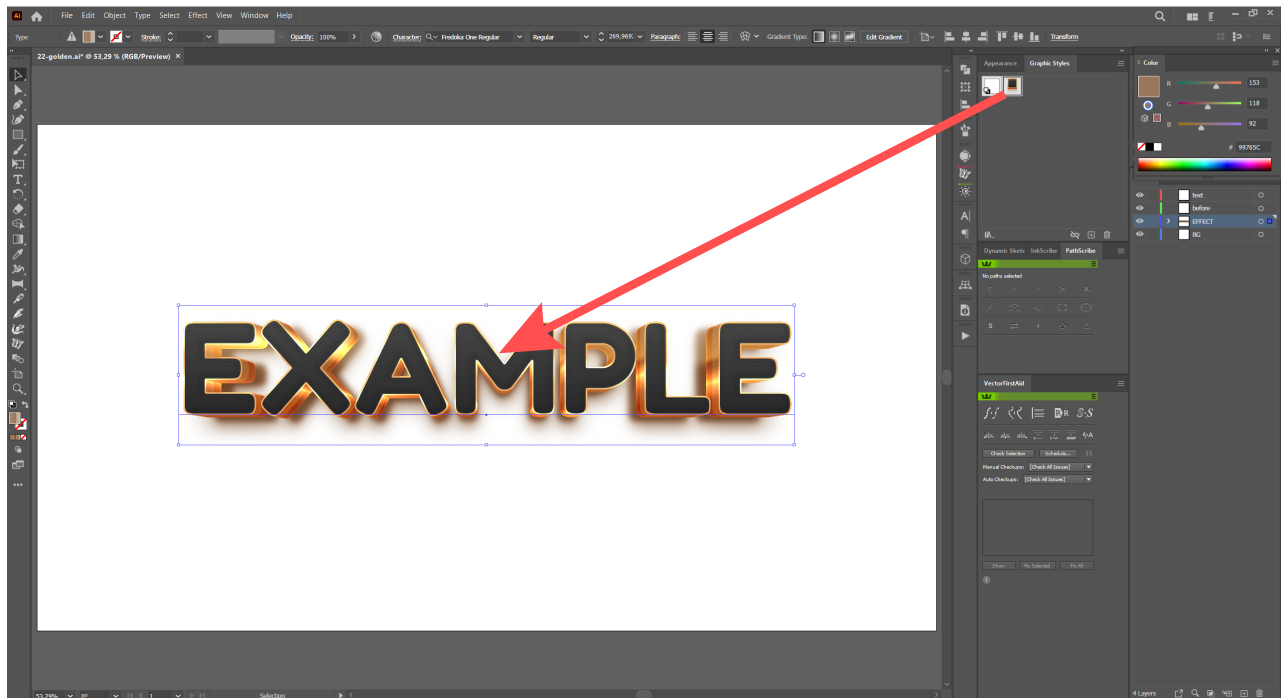
5. Just double click on the text with the effect and type your text and the text effect will be applied!



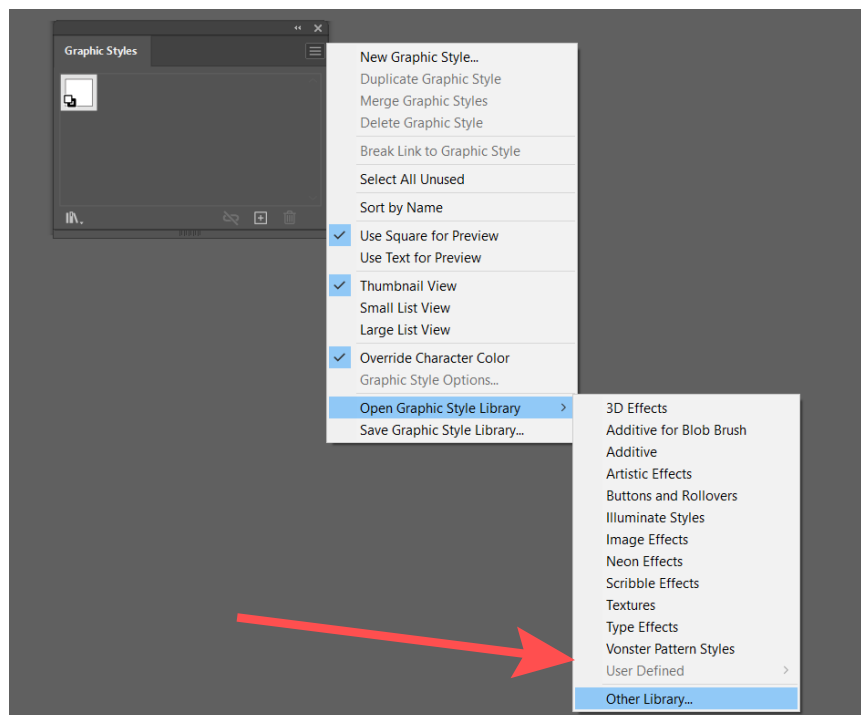
- 6 There is a second way. Type any text.



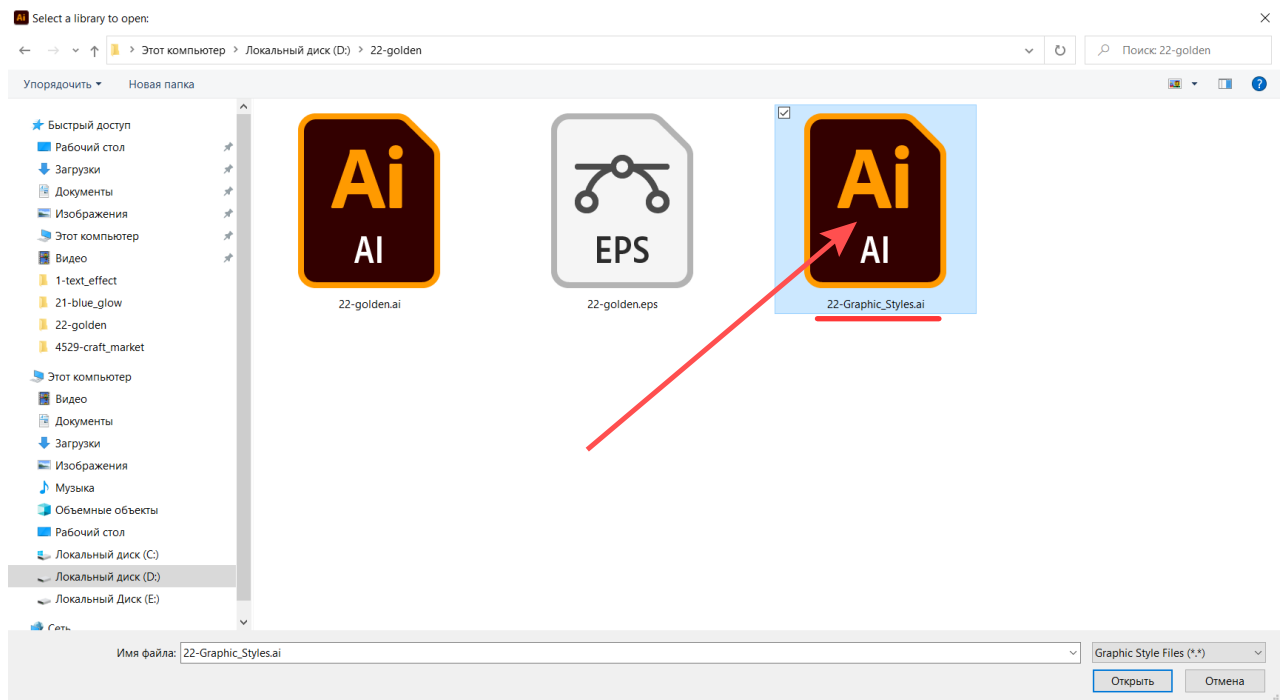
7. Select the text and click on the effect icon in the “Graphic Styles” panel. Great!



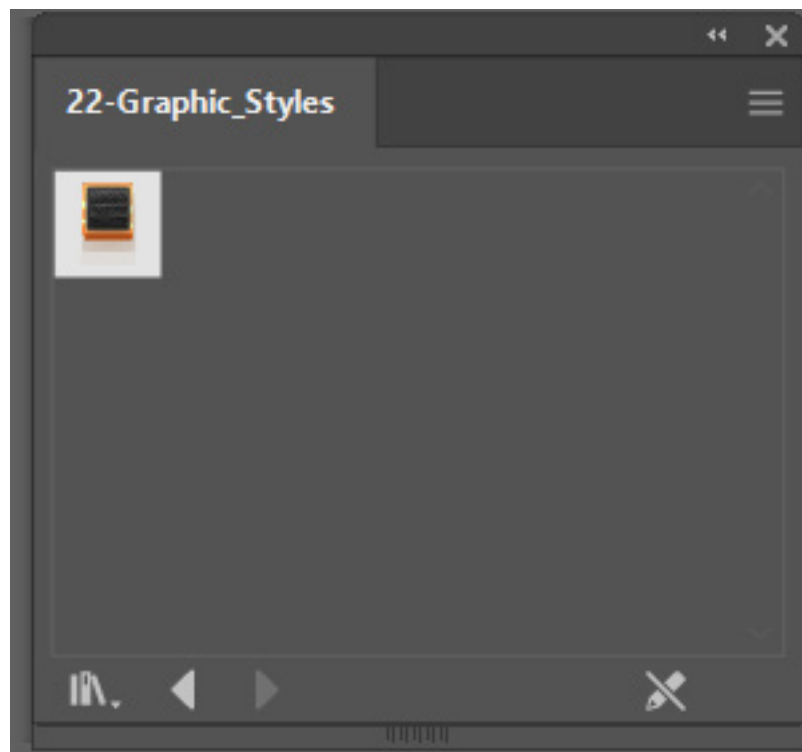
8. If there is no effect in “Graphic Styles”, you can add one. Find the “Graphic Styles” panel. Click on three horizontal lines -> Open Graphic Style Library->Other Library.



9. Find the "Graphic Styles" file in the purchased product.



10. The selected effect will open in a new window.



11. Repeat steps 6,7 to apply the effect to any text.
12. Instead of an .AI file, you can use an .EPS file.



Thank you for your attention!

Best Regards, Gusev Aleksandr

◀ **rwgusev** ▶