

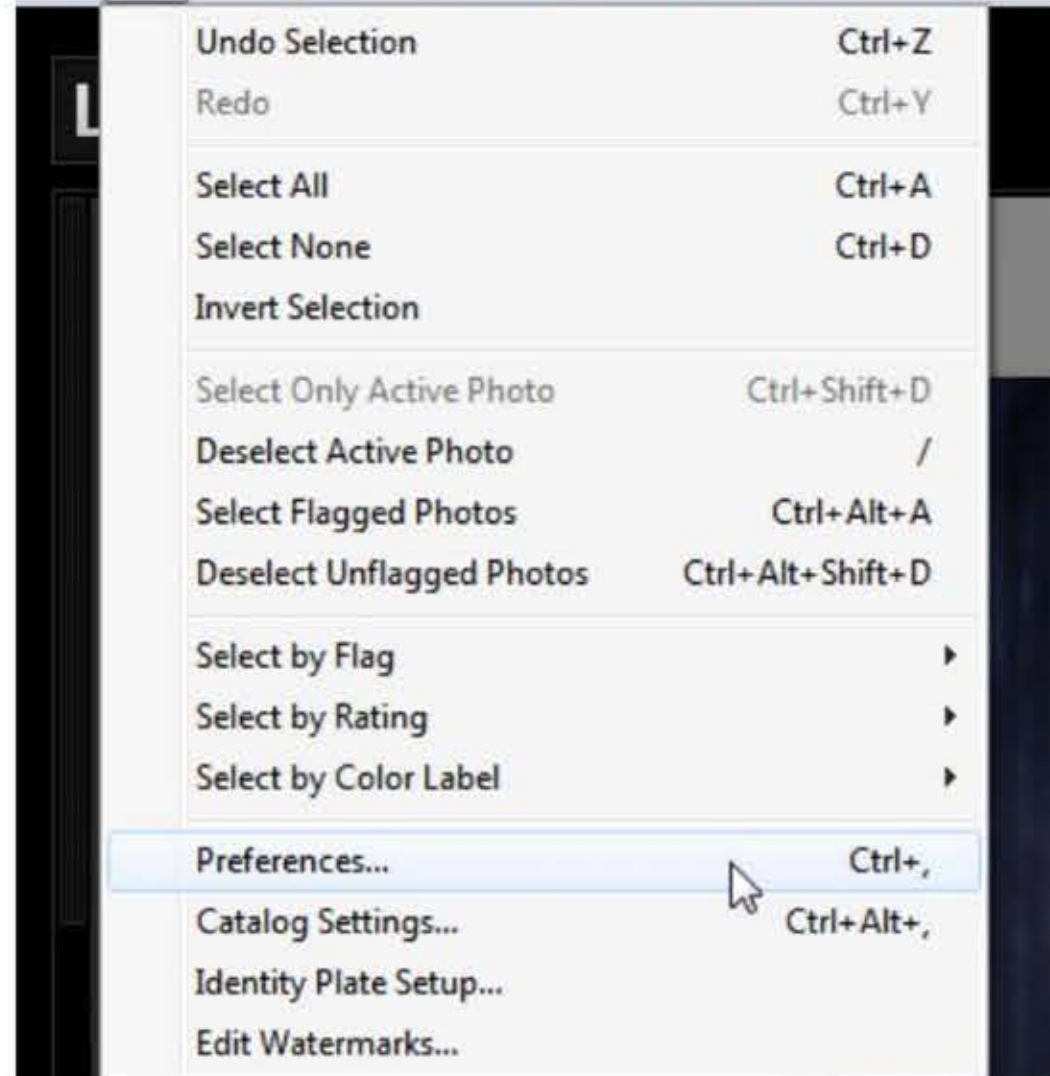
50 Intense Lightroom Presets

This document tells how to import and use this presets in Lightroom, Must read in order to get the best results .

How to import / Install presets in Lightroom

❑ OPEN YOUR LIGHTROOM APPLICATION THEN

❑ Click on Edit at the top (next to File).Then Go down to Preferences and click on it.



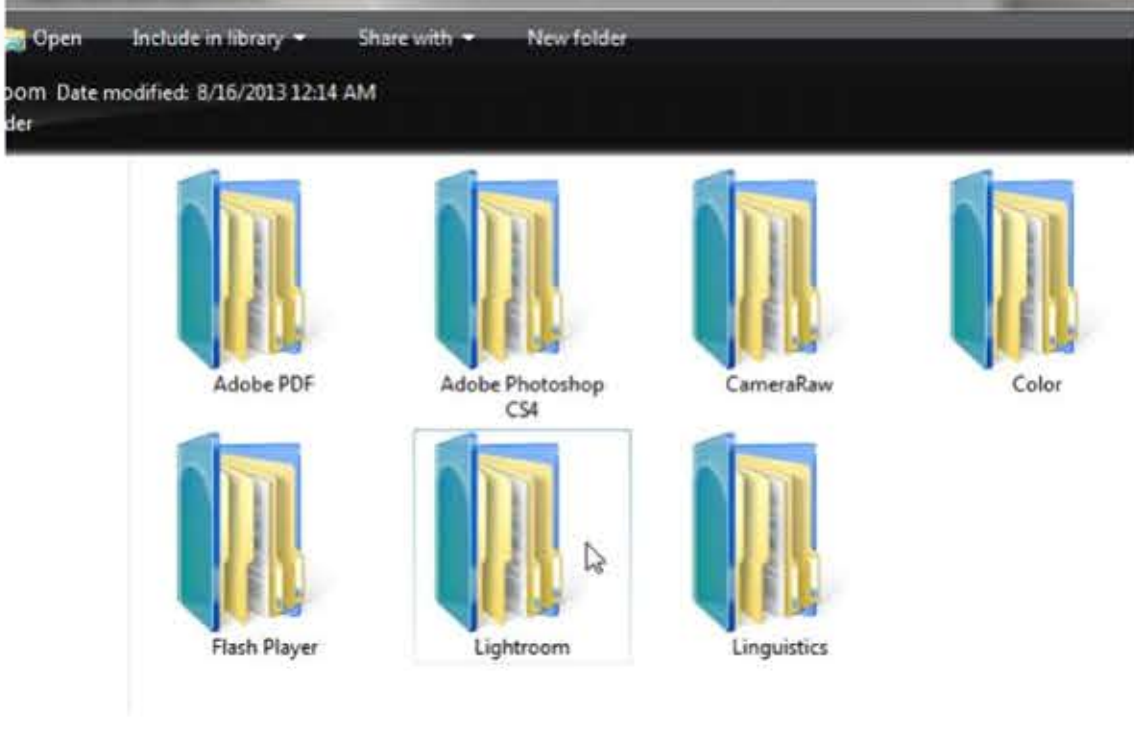
❑ There will be a new screen that pulls up. There will be six tabs at the top, click on Presets (second tab).



❑ Click on the box titled, Show Lightroom Presets Folder.



❑ Double click on Lightroom.



❑ Next double click on Develop Presets.



❑ Copy the Presets Folder “50 Intense Lightroom Presets”, found in your download.

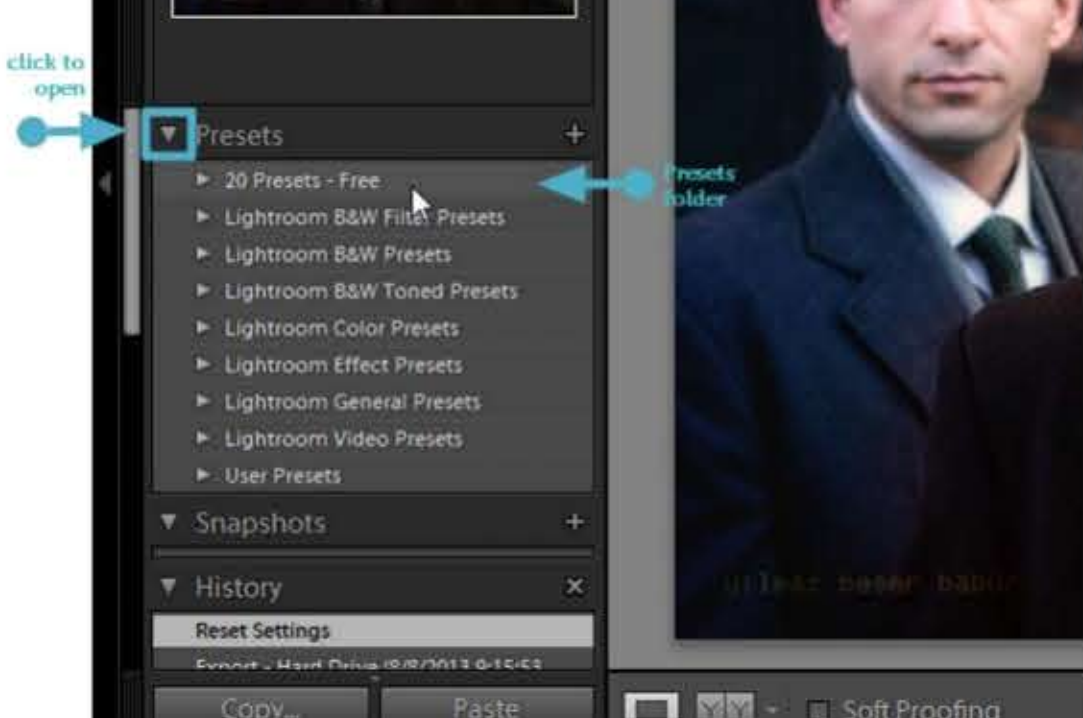
❑ You are done Importing! You will have to close Lightroom and restart it to see the presets.

How to use preset in Lightroom

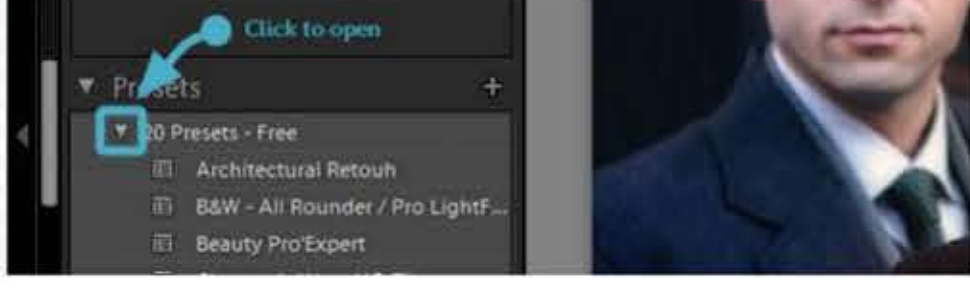
❑ First Import an image or video.



❑ Now select the preset, from preset window. (See the step carefully)



Step – 01



Step – 02



Step – 03

❑ Done. Enjoy (Press "CTRL + SHIFT + E " To save Image)

***TIP: To import videos and apply this presets on them you need to have QuickTime Installed on Your Computer**