

REFINED_{co}

PRESET & PROFILE INSTALLATION GUIDE

HOW TO INSTALL YOUR PRESETS

ADOBE LIGHTROOM CC CLASSIC



1. Download your preset & profiles and unzip the folder. Archive a copy of your **REFINED Co.** Preset folder.
2. Open **Adobe Lightroom CC Classic**. In upper left menu bar click **Preferences**. A pop up window will open.
3. Be sure to check **Show Partially Compatible Develop Presets**.
4. Click **Show Lighthouse Develop Presets**.
5. Open **Settings** folder. Place your individual preset and profile folders here.
6. Restart Lightroom.

HOW TO INSTALL YOUR PRESETS

ADOBE LIGHTROOM CC



1. Download your preset & profiles and unzip the folder. Archive a copy of your **REFINED Co.** Preset folder.
2. Open **Adobe Lightroom CC**. On the right panel click the preset icon in the upper right. A new panel will open.
3. At the bottom select Presets. A new panel will open.
4. Click the **3 dots** in the upper right of that panel.
5. Select **Load Presets**.
6. Navigate to your preset and profile folders, select the individual folders and select Open.
7. Your presets and profiles will load. If you do not see them, restart Lightroom CC.

HOW TO INSTALL YOUR PRESETS

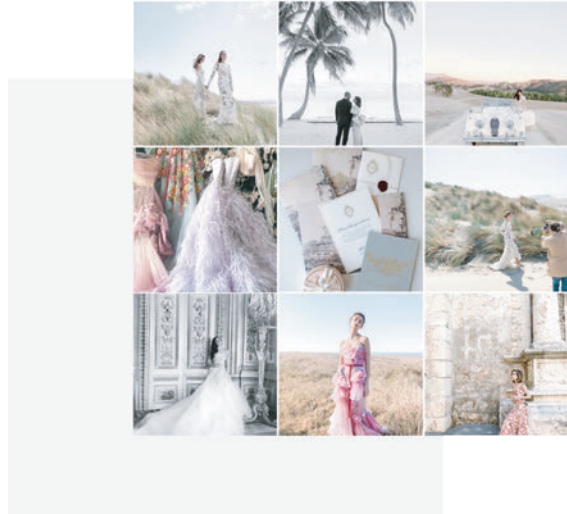
ADOBE CAMERA RAW (ACR)



1. Download your preset & profiles and unzip the folder. Archive a copy of your **REFINED Co.** Preset folder.
2. Open Adobe Camera RAW. Open the Preset Panel. Select the drop down menu. Select Load Settings....
3. Navigate to the individual folders you unzipped and saved on your computer. Select the presets and/or profiles you want to import.
4. If you do not see your preset or profile folders **Restart Lightroom CC.** If you still have trouble visit our Support page for other install instructions.
5. If you do not see your preset or profile folders **Restart ACR.** If you still have trouble visit our Support page for the other install instructions.

HOW TO INSTALL YOUR PRESETS

LIGHTROOM MOBILE
DESKTOP SYNC



1. Download your preset & profiles and unzip the folder. Archive a copy of your **REFINED Co.** Preset folder.
2. Open **Adobe Lightroom CC (desktop)**. Select **File > Load Presets & Profiles**.
3. Navigate to the individual folders you unzipped and saved on your computer. Select the presets and/or profiles you want to import.
4. If you do not see your preset or profile folders **Restart Lightroom CC**. If you still have trouble visit our Support page for other install instructions.
5. Be sure your sync settings are turned on for desktop and your mobile app. Presets will sync to your mobile device.