

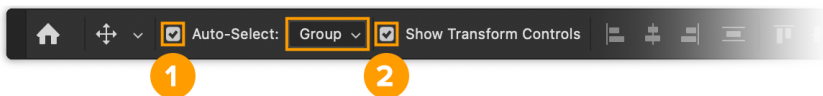
Custom Scene Guide

How to Use a Mockup Scene in Adobe Photoshop

1. Setting Up Your Workspace

Open Photoshop and select the  'Move tool' (Shortcut: V). Enable the following settings:

1. **Auto-Select (1)**: Choose 'Group' from the dropdown.
2. **Show Transform Controls (2)**: Check this box for easier editing.

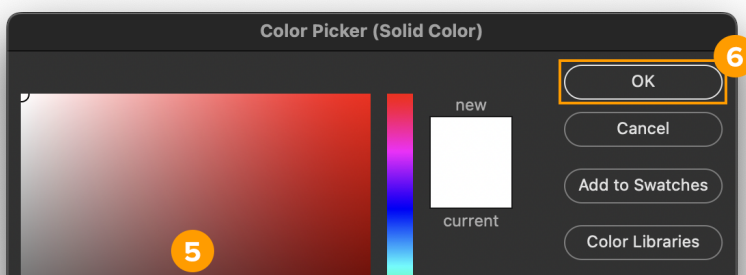
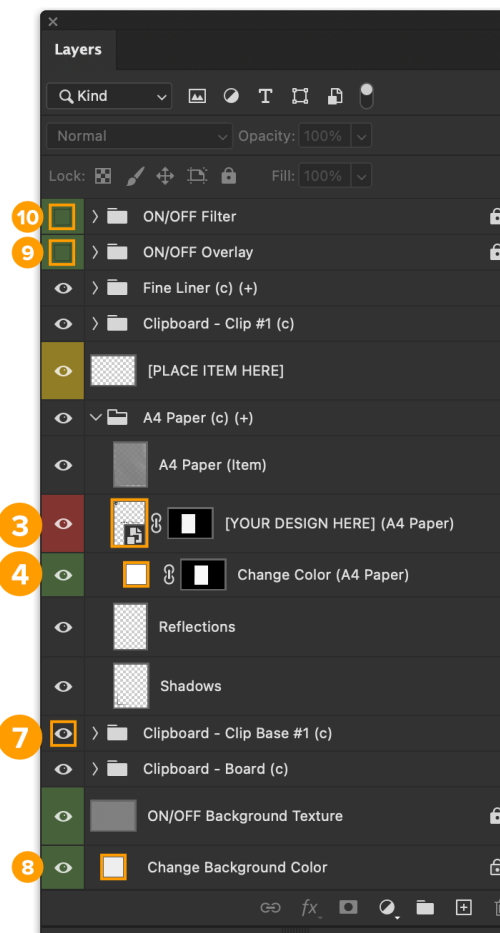


2. Adding Your Design


1. Double-click the *PSD file* in your downloaded Custom Scene package.
2. In the *Layers* panel, find and double-click on the smart-object layer labeled **[YOUR DESIGN HERE] (... (3)**
3. Optionally, hide any layers you don't need.
4. Drag & drop your design into the document, or use **File > Place Embedded**.
5. Adjust the size and position with **Edit > Free Transform** (Shortcut: CMD + T / CTRL + T).
6. Save the changes with **File > Save** (Shortcut: CMD + S / CTRL + S) and close the document.

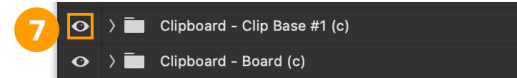
3. Customizing Item Colors

1. **Select an Item**: Click on an item in your scene. It will be highlighted in the *Layers* panel.
2. Double-click the **Change Color (... (4)** layer within the item's folder.
3. Select your desired color (5) in the *Color Picker* and click **OK (6)**.



4. Rearranging the Scene

1. **Move and Transform:** With the  **Move tool** (V), select an item. Resize or rotate using the transform controls.
2. **Show/Hide Items:** To hide an item, click the *visibility icon* (7) next to it in the *Layers* panel.
3. **Duplicate Items:** Duplicate any item with **Layer > Duplicate Group...** (Shortcut: CMD + J / CTRL + J).



5. Enhancing the Scene

1. **Background Color:** Double-click the **Change Background Color** (8) layer to select a new color.
2. **Add Realism:** Enable the **ON/OFF Overlay** (9) folder for lighting and shadows. Adjust the folder's opacity for customization.
3. **Apply Filters:** Activate the **ON/OFF Filter** (10) folder for enhanced colors and contrasts.
4. **Final Touch:** Apply these enhancements at the end for a smoother editing experience.

